

This document describes the steps required to interface OpenLM with the JetBrains Floating License Server (**FLS**) in order to monitor license usage and obtain license statistics.

## Table of Contents:

### [1. Requirements](#)

### [2. Monitoring capabilities and features](#)

### [3. OpenLM Broker configuration](#)

#### [3.1. Locating the JetBrains FLS token](#)

### [4. OpenLM Server configuration](#)

### [5. How to verify your JetBrains FLS configuration](#)

## 1. Requirements

To query JetBrains FLS the following components must be installed:

1. OpenLM Server v4.7 or higher installed on a machine in your organization
2. OpenLM Broker v4.10 or higher installed on the same machine as JetBrains FLS

## 2. Monitoring capabilities and features

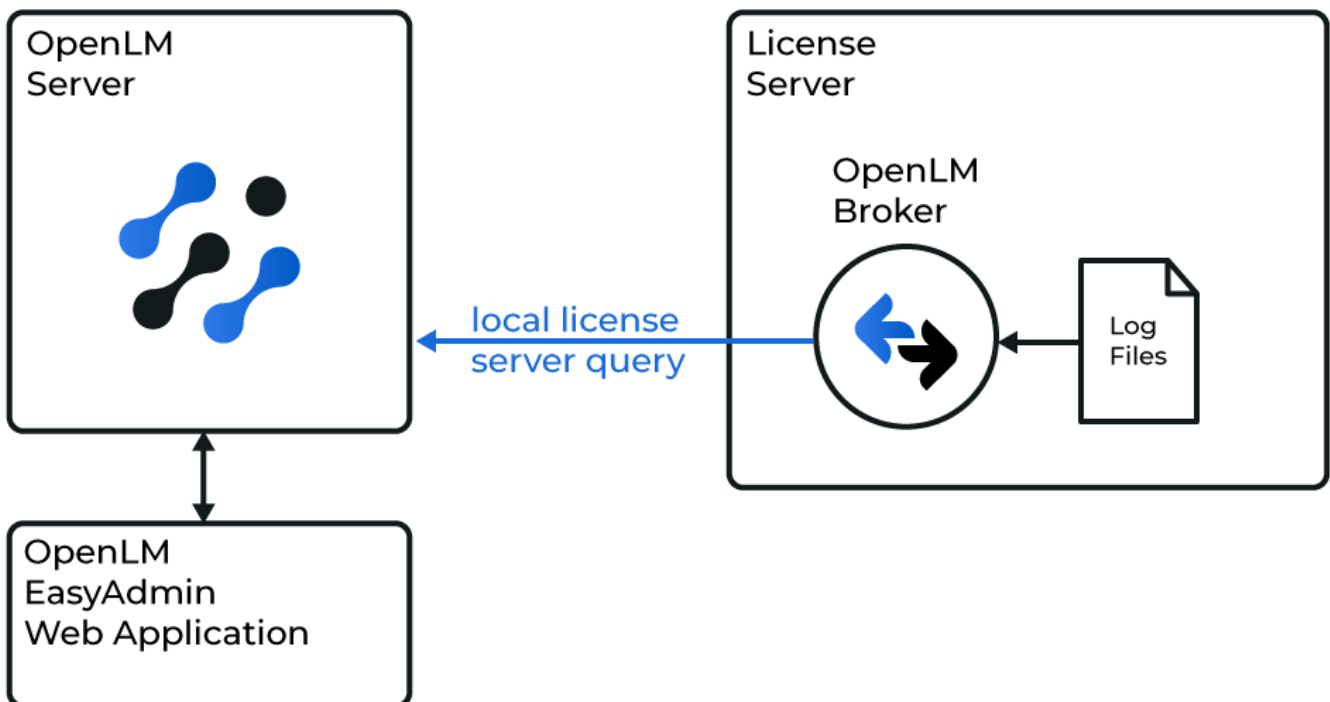
The current monitoring capabilities available for the JetBrains FLS license manager through OpenLM Broker are as follows:

<b>Feature</b>	Resolution	License totals	License usage	Denials Reporting	Borrowed License Reporting	Expiration Date Reporting	Multiple Server Redundancy
<b>Support</b>	By minute	☐	☐	☐	☐	☐	☐

Additionally, using the Broker component allows for buffered communication and the ability

to remotely start / stop the license manager service.

### 3. OpenLM Broker configuration



*Diagram of how OpenLM interfaces with the JetBrains FLS*

OpenLM Broker queries JetBrains FLS locally. This is done through the JetBrains FLS HTTP port. Once FLS is queried by Broker, the data is sent to OpenLM Server for processing.

Please note that OpenLM Broker must already be [installed](#) and [configured](#) to report to OpenLM Server before proceeding further.

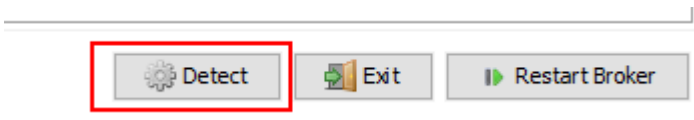
#### 3.1. Locating the JetBrains FLS token

The JetBrains reporting token must be configured before Broker can read license usage data.

1. If you already have the token configured, once you run the autodetect function (see below), Broker reads the **service-config.properties** file and inserts it automatically in the configuration options.
2. If you haven't configured your reporting token yet and will be configuring Broker manually, follow the steps in the [JetBrains manual](#). Once finished, make sure to copy or write the token down as you will need to edit the `data_inquiry` command later on.

### Automatic OpenLM Broker configuration

To automatically configure OpenLM Broker with JetBrains FLS, click **Detect** in the bottom right corner of the Broker configuration tool window:



If the JetBrains FLS service or process is started, Broker will detect and configure most settings automatically.

Click **Apply** to commit the changes then **Restart Broker**.

It is recommended to manually check that the automatic configuration is working by going to Commands → `data_query` and clicking **Execute**.

### Manual OpenLM Broker configuration

If auto-detect did not work, you can also add and configure the license manager manually. To do so:

1. Click **Add Port**.
2. Enter the JetBrains FLS port number (default: 8080).
3. Select **JetBrains** from the "License Manager Type" drop-down menu. Click **Apply**.
4. Select **Commands**. In the "Update path for commands" field enter or browse to the root folder where JetBrains FLS is installed. Click **Update** then **Apply**.
5. Select the **data\_inquiry** node. Edit and replace the `<TOKEN>` placeholders with the

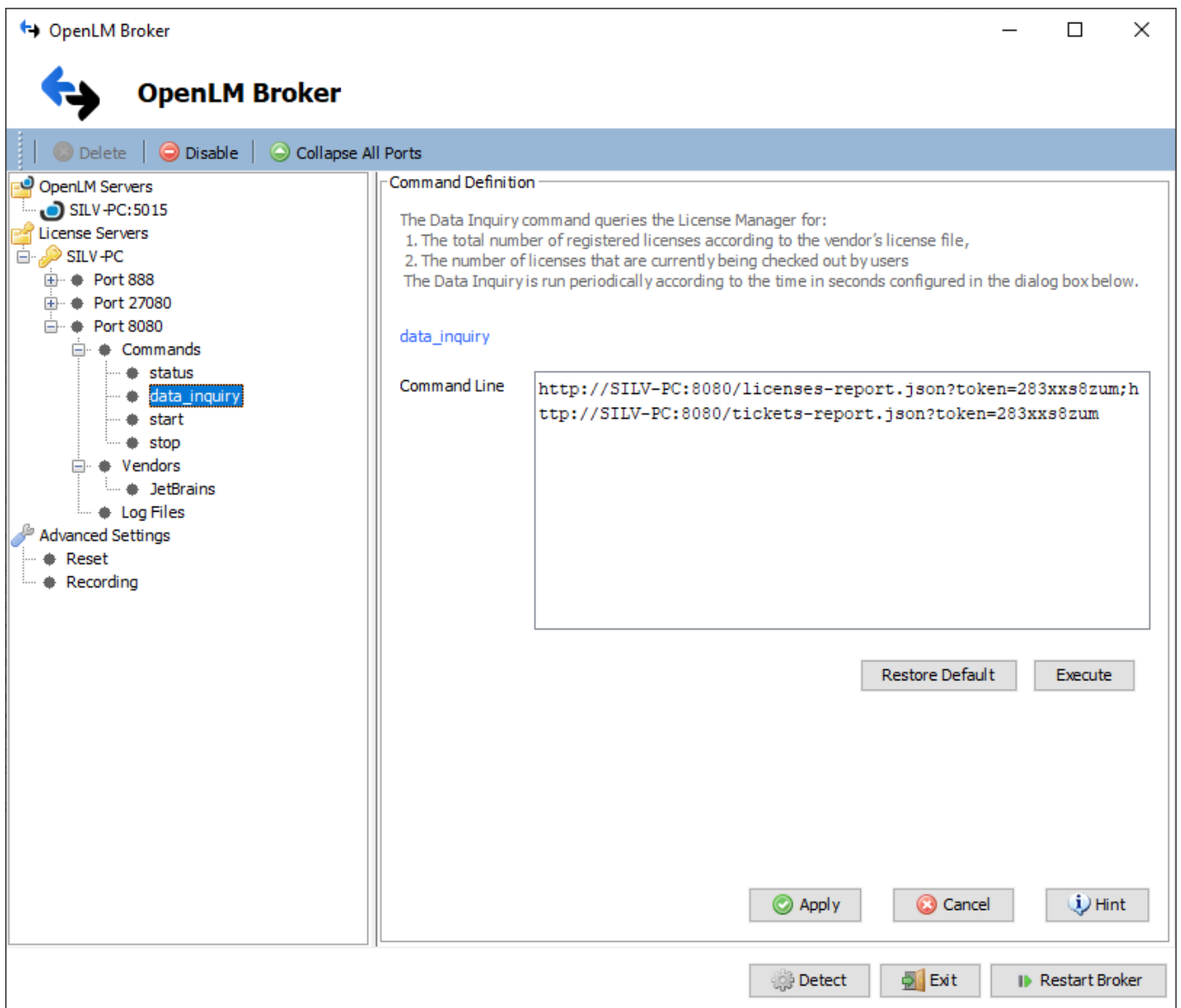
token that you configured in step 3.1 of this document (e.g.

<http://SILV-PC:8080/licenses-report.json?token=283xxs8zum>; <http://SILV-PC:8080/tickets-report.json?token=283xxs8zum>). Click **Execute** to verify the command, then click

**Apply**.

6. Select "Vendor Name to Be Filled" under Vendors. Enter **JetBrains** in the "Vendor Name" field then click **Apply**.
7. Click **Apply**.
8. Click **Restart Broker**.
9. Follow the steps in section 4 ("OpenLM Server configuration"), below.





## 4. OpenLM Server configuration

### Automatic OpenLM Server configuration through EasyAdmin

If you have followed the steps in the section above, OpenLM Broker should now be transmitting data to OpenLM Server. The final step is to approve the configuration in EasyAdmin:

1. Open the EasyAdmin interface either by accessing **http://<OpenLM Server IP>:7019/EasyAdmin2/** in your browser or through **Windows Start → OpenLM → OpenLM EasyAdmin User Interface**
2. In the License Servers window, hover over the red row that contains the details of the newly added JetBrains FLS server entry and click **Approve**.

Stat...	Updated On	Name	Type	Q...	U...	B...	U...	Read License File	
⊕	⚠	8080@si	OpenLM Generic	N/A	0	0	0.00		
⊕	⚠	Up-to-date	License Manager1	FLEXlm	N/A	0	0	0.00	
⊕	⚠	15/07/2020 13:55:48	FlexLM	FLEXlm	1	0	0	0.00	✓
⊕	✓	Up-to-date	App Manager	OpenLM App Mana...	Unli...	0	0	0.00	

Total number of servers: 3

At this point, the JetBrains FLS has been automatically added to OpenLM Server and configuration is complete.

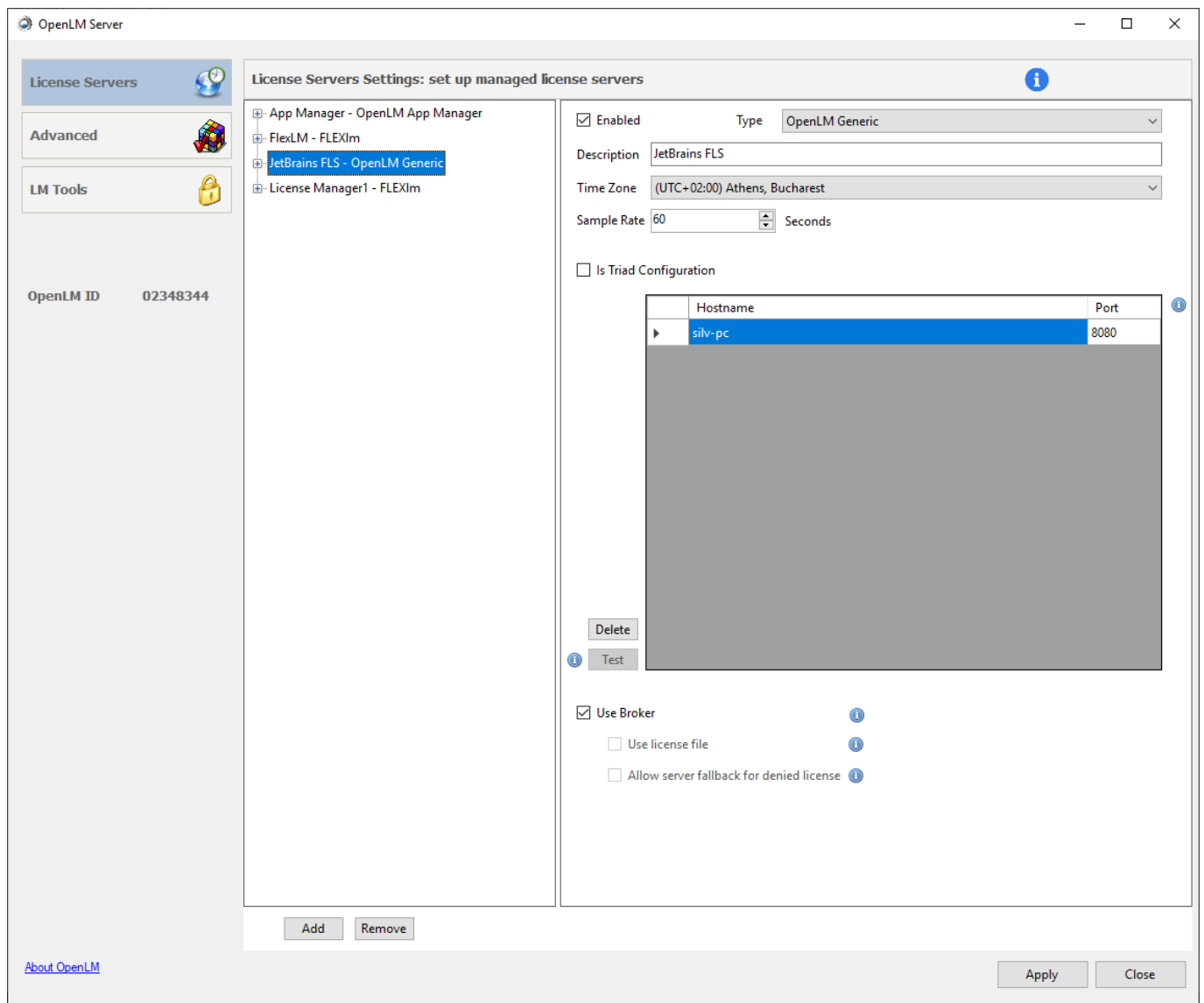
## Manual OpenLM Server configuration

If automatic configuration has failed, you can manually configure OpenLM Server to connect to the OpenLM Broker installation located on the JetBrains FLS machine. This is done with the help of the OpenLM Server configuration tool (Windows Start → OpenLM → OpenLM Server)

The hostname and port settings must match those that have been configured for OpenLM Broker.

## Adding a JetBrains FLS server

1. Select the **License Servers** tab.
2. Click **Add**.
3. From the **Type** drop-down menu, select **OpenLM Generic**.
4. Insert a description in the Description text box (e.g. "JetBrains FLS")
5. Set the **Time Zone** to where the License Server physically resides.
6. Enter the **Hostname** and **Port** number of the machine where the JetBrains FLS is installed. The JetBrains FLS LM default port is **8080**.
7. **Is Triad Configuration** box: unchecked.
8. **Use Broker** box: checked.
9. Click **Apply** and close the OpenLM Server configuration tool.





OpenLM Server is now configured to monitor the incoming data from OpenLM Broker.

## 5. How to verify your JetBrains FLS configuration

To check if the JetBrains FLS license manager is being monitored correctly:

1. Open the EasyAdmin web application (access **http://<OpenLM Server hostname>/EasyAdmin2/index.html** in your browser)
2. Click **EasyAdmin Start → Widgets → License Servers**. Verify that the configured license manager(s) appears in the server list. A green circle node indicates an active connection to the license server.

Stat...	Updated On	Name	Type	Q...	U...	B...	U...	Read License File
⚠	Up-to-date	License Manager1	FLEXlm	N/A	0	0	0.00	
⚠	15/07/2020 13:55:48	FlexLM	FLEXlm	1	0	0	0.00	🔍
✅	Up-to-date	App Manager	OpenLM App Mana...	Unli...	0	0	0.00	
✅	Up-to-date	JetBrains FLS	OpenLM Generic	70	14	0	20.00	

Total number of servers: 4

Please note that sometimes it may take up to 3 minutes for the status indicator to change if this is a new connection.