

This document describes the steps required to interface OpenLM with the OpenText license manager in order to monitor license usage and obtain license statistics. This guide is based on the OpenText implementation that is integrated with OpenLM Broker v4.8.8. If you're using an older version of Broker that relies on the EventLog Monitor tool, please consult [this document](#) instead.

Table of Contents:

[1. Requirements](#)

[2. Monitoring capabilities and features](#)

[3. OpenLM Broker configuration](#)

[3.1. Enabling OpenText license manager usage log functionality](#)

[3.2. OpenLM Broker configuration tool settings](#)

[3.3. OpenText.properties configuration](#)

[4. OpenLM Server configuration](#)

[5. How to verify your OpenText license manager configuration](#)

1. Requirements

To query the OpenText license manager, the following components must be installed:

1. OpenLM Server v4.3 or higher installed on a machine in your organization
2. OpenLM Broker v4.8.8 or higher installed on the same machine as the OpenText license manager

2. Monitoring capabilities and features

The monitoring capabilities available for the OpenText license manager through the OpenLM Broker are as follows:

Feature	Resolution	License totals	License usage	Denials Reporting	Borrowed License Reporting	Expiration Date Reporting	Multiple Server Redundancy
Support	By second	☐	☐	☐	☐	☐	☐

Additionally, using the Broker component allows for buffered communication and the ability to remotely start / stop the license manager service.

3. OpenLM Broker configuration

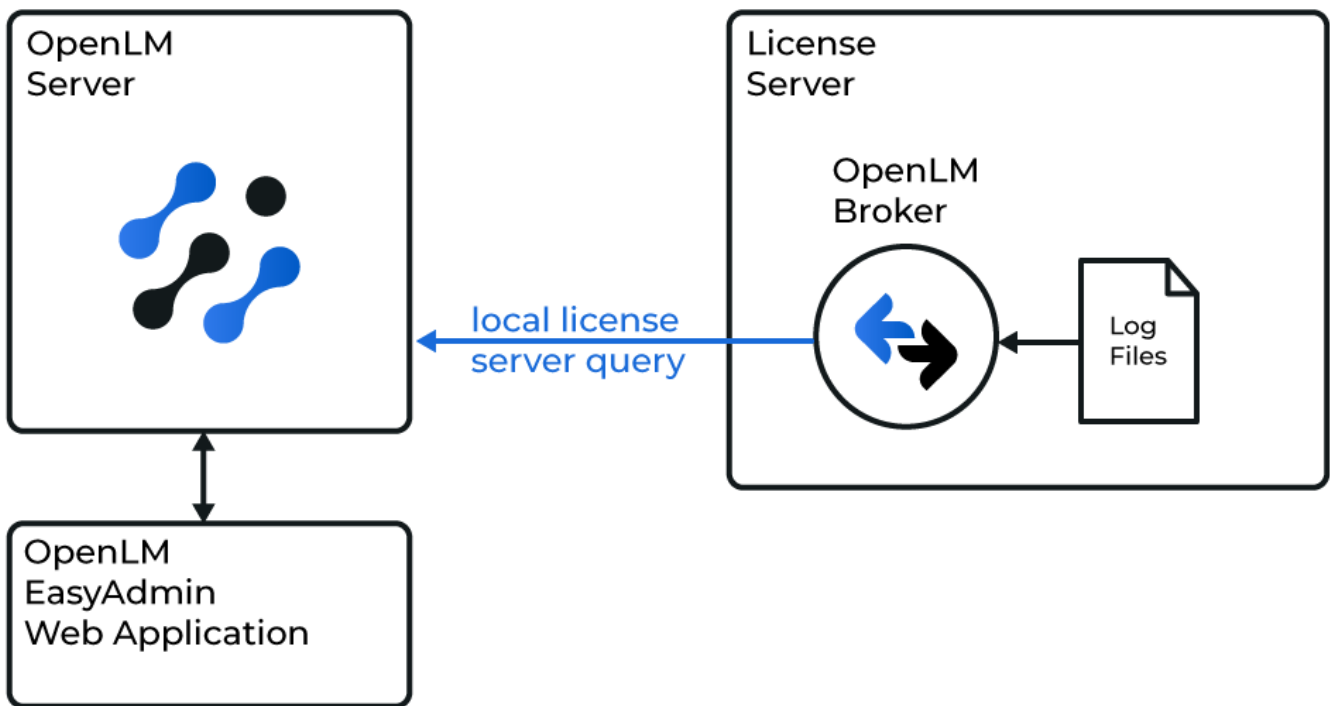


Diagram of how OpenLM interfaces with the OpenText license manager

The mechanism on how OpenLM Broker interfaces the OpenText license manager is as follows:

1. The OpenText license manager writes usage data to a log file.
2. Broker monitors this log file for changes, reads it and creates an XML file in the OpenLM Generic format.

3. All gathered license usage information is then sent to OpenLM Server for processing. The license usage data is then accessible through the EasyAdmin interface.

Please note that OpenLM Broker must already be [installed](#) and [configured](#) to report to an OpenLM Server before proceeding any further.

3.1. Enabling OpenText license manager usage log functionality

The OpenText license manager needs to be configured to log all information to a specific file (e.g. **ImgLM_##_##_##_log**).

ImgLM.ini is the file that has to be configured for OpenText logging. Please note the following:

Event log message IDs

The “Event log message IDs” part marks the information to be logged. ID numbers are attributed a value:

- 0 - Do not log this event
- 1 - Enable logging for this event

For example, the line

257=0

Means that a successful license check-out event will not be logged, whereas

257=1

Will log a successful license check-out event.

Event Log File

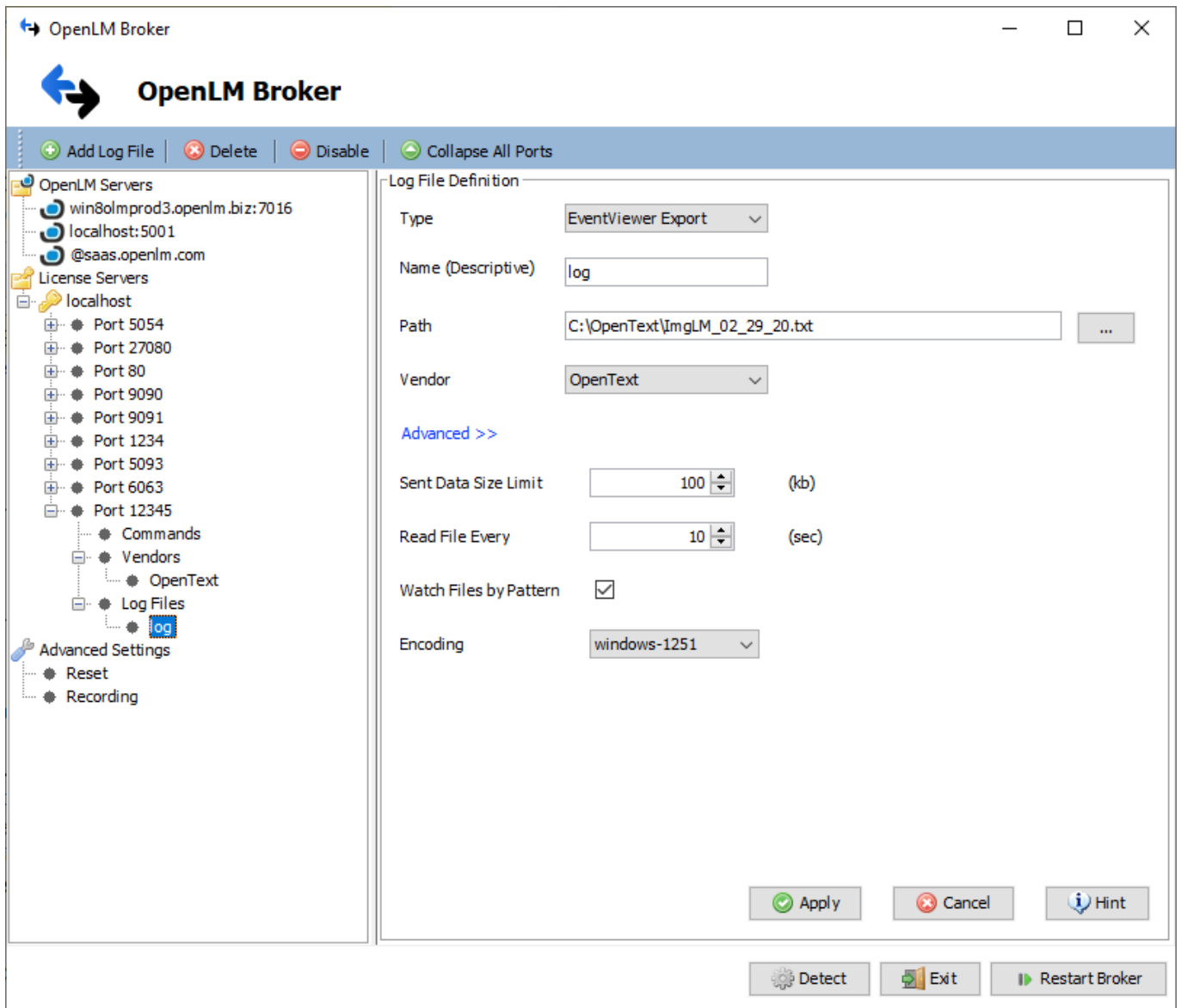
- **Event Log File Max Size:** Maximal size of the log file in MB. Set it to a large enough value to contain data for a significant amount of time.

- **Event Log File Max Duration:** Number of days for running the log. Set it to 365 days.

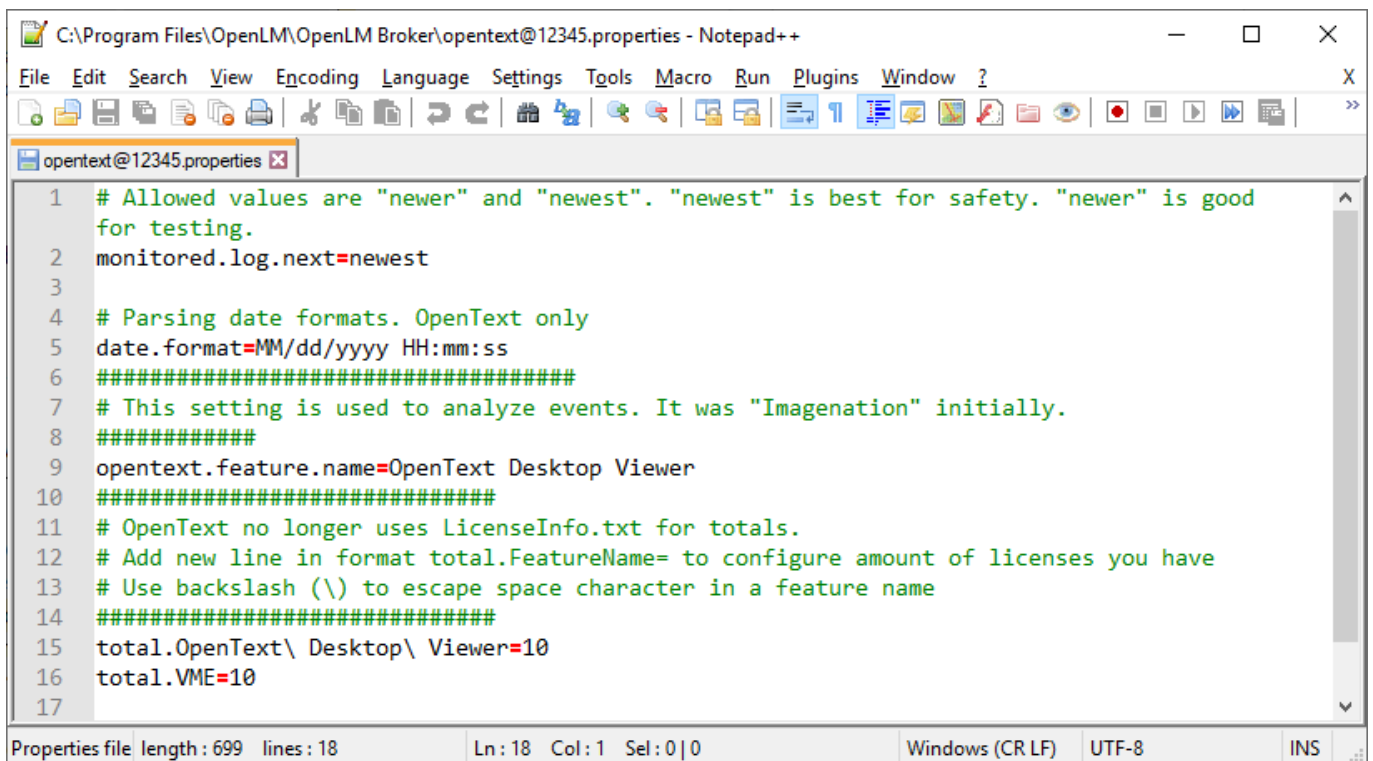
3.2. OpenLM Broker configuration tool settings

To configure Broker to monitor the OpenText license server, in the OpenLM Broker configuration tool:

1. Click **Add Port**.
2. Enter any port number (since Broker interfaces OpenText using only the log file, any value will do. E.g. **12345**).
3. Select **OpenText** from the “License Manager Type” drop-down menu. Click **Apply**.
4. Select “Vendor Name to Be Filled” under Vendors. In the “Vendor Name” field, enter a name that you would like to see in OpenLM’s Reports (e.g. OpenText) then click **Apply**.
5. Select the Log Files node and click on **Add Log File**.
6. Select the “log” node that has just been created. Click **[...]** and browse to the path where the configured OpenText log file is located. (e.g. **“C:\OpenText\ImgLM_##_##_##_#.txt”** where the # hash symbols indicate the creation date for that particular log file). We recommend using the newest file created from the moment OpenText logging was turned on.
7. Click **Advanced** then check the **“Watch Files by Pattern”** box.
8. Click **Apply**.
9. Open the **opentext@PORT.properties** file that has been created in the OpenLM Broker folder (typically “C:\Program Files\OpenLM\OpenLM Broker”) in a text editor.
10. Adjust the values as described in the “OpenText.properties” section below. When done, save and close the file.
11. Click **Restart Broker**.
12. Follow the steps in the next section (“4. OpenLM Server configuration”).



3.3. OpenText.properties configuration



```
1 # Allowed values are "newer" and "newest". "newest" is best for safety. "newer" is good
  for testing.
2 monitored.log.next=newest
3
4 # Parsing date formats. OpenText only
5 date.format=MM/dd/yyyy HH:mm:ss
6 #####
7 # This setting is used to analyze events. It was "Imagenation" initially.
8 #####
9 opentext.feature.name=OpenText Desktop Viewer
10 #####
11 # OpenText no longer uses LicenseInfo.txt for totals.
12 # Add new line in format total.FeatureName= to configure amount of licenses you have
13 # Use backslash (\) to escape space character in a feature name
14 #####
15 total.OpenText\ Desktop\ Viewer=10
16 total.VME=10
17
```

The values should be configured as follows:

- **monitored.log.next** - used to specify which log file Broker should read: newest (default) means that if you have multiple files, the latest one will be chosen; newer is good for testing purposes and if you want OpenLM Broker to read historical data from multiple files, one-by-one. However with newer, it is not guaranteed that all data will be loaded.
- **date.format** - used for parsing the internal OpenText log file (default: MM/dd/yyyy HH:mm:ss)
- **opentext.feature.name** - the feature name to be monitored (default: OpenText Desktop Viewer)
- **total.<FeatureName>** - the total amount of licenses to be reported to Server and displayed in EasyAdmin and the associated reports (e.g. total.OpenText\ Desktop\ Viewer=10)

4. OpenLM Server configuration

Automatic OpenLM Server configuration through EasyAdmin

If you have followed the steps in the section above, OpenLM Broker should now be transmitting data to OpenLM Server. The final step is to approve the configuration in EasyAdmin:

1. Open the EasyAdmin interface either by accessing **http://<OpenLM Server IP>:7019/EasyAdmin2/** in your browser or through **Windows Start → OpenLM → OpenLM EasyAdmin User Interface**.
2. In the License Servers window, hover over the red row that contains the details of the newly added OpenText license manager entry and click **Approve**.

The rows in red represent license servers that are sending information via the broker but have not been configured. To add this server to the configured servers list, hover over the line and click 'Approve' or click 'Clear' to remove the entry from the current display. Note that removing an entry from the list will not prevent reappearance following subsequent receipt of data from the broker, so you should also check the broker configuration and change if required.

Stat...	Updated On	Name	Type	Q..	U..	B..	U..	Read License File	
⚠		80@	Approve Clear	OpenLM Generic	N/A	0	0	0.00	✓
✓	Up-to-date	Local AppManager	OpenLM App M...	Un...	0	0	0.00		

Total number of servers: 1

At this point, the OpenText license manager has been automatically added to OpenLM Server and configuration is complete.

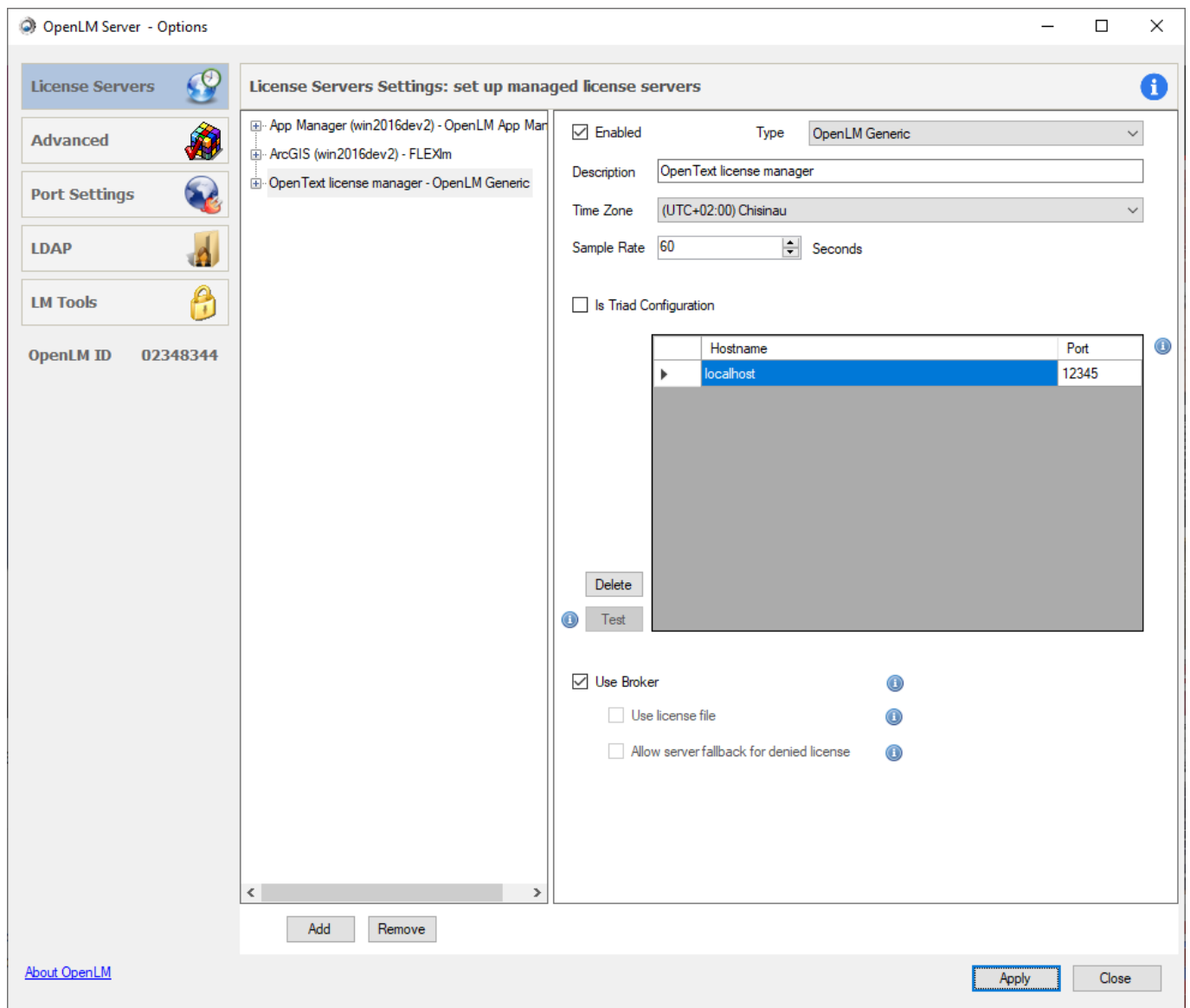
Manual OpenLM Server configuration

If EasyAdmin does not display the “Approve/Clear” message for the configured OpenText

license server, you must manually configure OpenLM Server to connect to the OpenLM Broker installation located on the OpenText license manager machine.

Adding an OpenText server

1. Select the **License Servers** tab.
2. Click **Add**.
3. From the **Type** drop-down menu, select **OpenLM Generic**.
4. Insert a description in the Description text box (e.g. "OpenText license manager")
5. Set the **Time Zone** to where the License Server physically resides.
6. Enter the **Hostname** and **Port** number of the machine where the OpenText license manager is installed. They must be exactly as configured for OpenLM Broker.
7. **Is Triad Configuration** box: unchecked.
8. **Use Broker** box: checked.
9. Click **Apply** and close the OpenLM Server configuration tool.



OpenLM Server is now configured to monitor incoming data from OpenLM Broker.

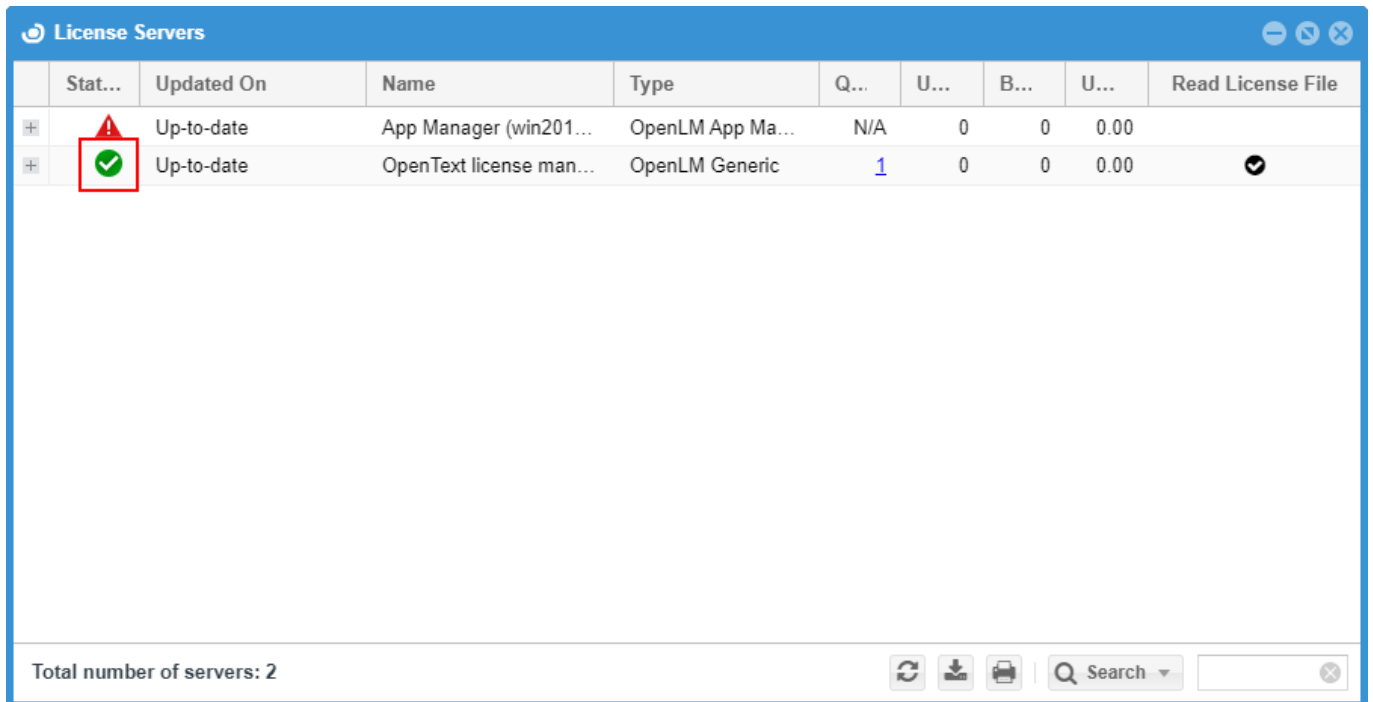
5. How to verify your OpenText license manager configuration

To check if the OpenText license manager is being monitored correctly:

1. Open the EasyAdmin web application (access **http://<OpenLM Server**

hostname>/EasyAdmin2/index.html in your browser)

2. Click **EasyAdmin Start → Widgets → License Servers**. Verify that the configured license manager(s) appears in the server list. A green circle node indicates an active connection to the license server.



	Stat...	Updated On	Name	Type	Q...	U...	B...	U...	Read License File
+	⚠	Up-to-date	App Manager (win201...	OpenLM App Ma...	N/A	0	0	0.00	
+	✔	Up-to-date	OpenText license man...	OpenLM Generic	1	0	0	0.00	✔

Total number of servers: 2

Please note that sometimes it may take up to 3 minutes for the status indicator to change if this is a new connection.