

This document describes the steps required to interface OpenLM with the TASKING License Management System (TLM) in order to monitor license usage and obtain license statistics.

Table of Contents:

[1. Requirements](#)

[2. Monitoring capabilities and features](#)

[3. OpenLM Broker configuration](#)

[4. OpenLM Server configuration](#)

[5. How to verify your TASKING license manager configuration](#)

1. Requirements

To query the TASKING License Management System (TLM) the following components must be installed:

1. OpenLM Server v4.3 or higher installed on a machine in your organization
2. OpenLM Broker v4.8.8 or higher installed on the same machine as the TASKING License Management System (TLM)

2. Monitoring capabilities and features

For TLM, OpenLM collects license totals and license usage data. Tracking of Denials and License borrowing is fully supported.

Since querying the license manager is done through OpenLM Broker, administrators get additional benefits such as:

- Buffered communication with OpenLM Server in order to overcome temporary network failures
- Remotely start / stop the license manager service

- By minute resolution for license usage reports

3. OpenLM Broker configuration

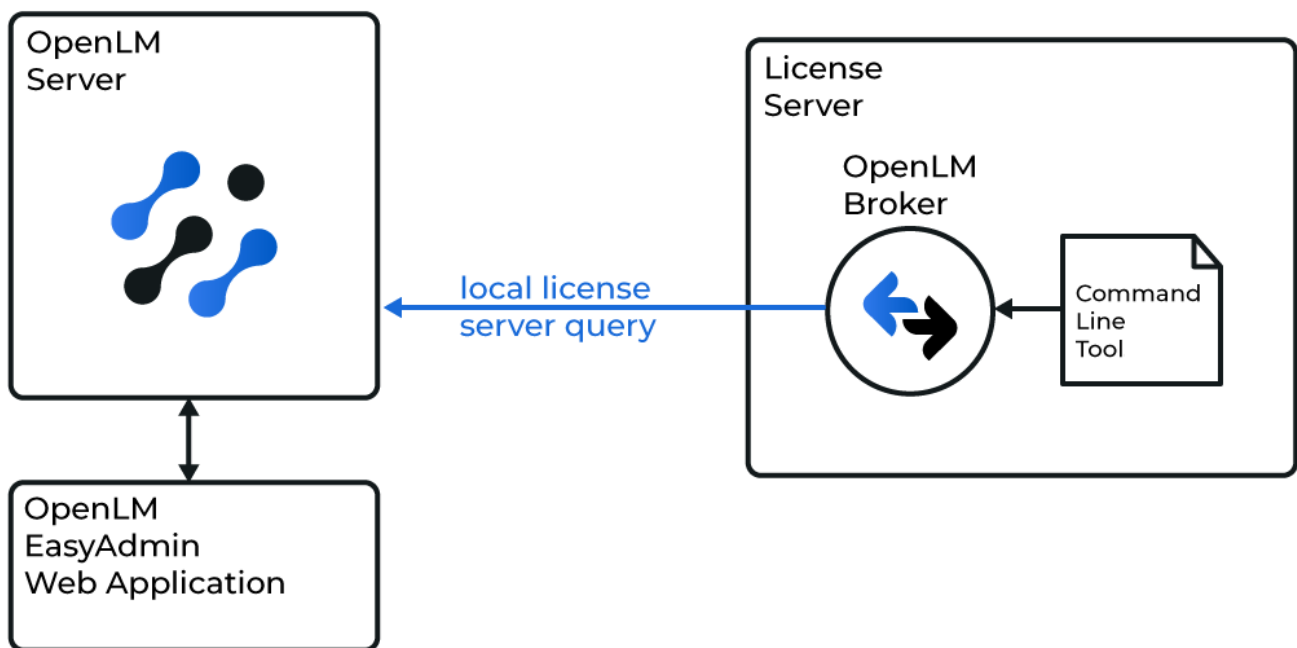
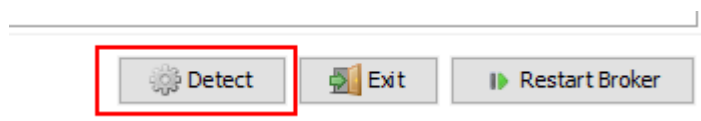


Diagram of how OpenLM interfaces with the TASKING License Manager

The OpenLM Broker component should be installed ([guide](#)) and configured ([guide](#)) on the same machine where the TASKING License Management System resides. Broker queries the license manager using the **licdstat** tool and then sends the data to the OpenLM Server it has been configured with.

Automatic OpenLM Broker configuration

To automatically configure OpenLM Broker with TLM, click **Detect** in the bottom right corner of the Broker configuration tool window:

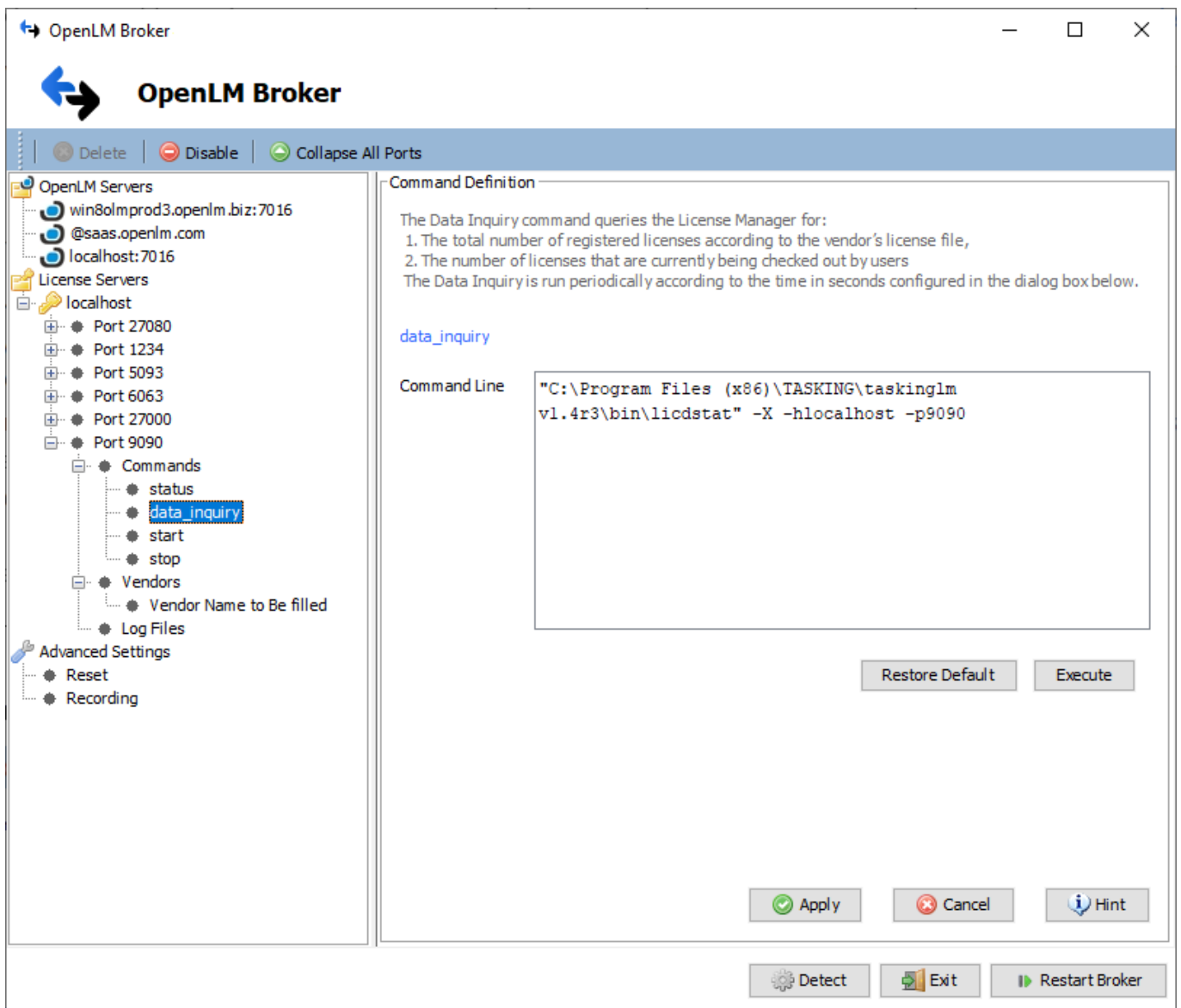


If the TLM service (e.g. "TASKING License Service") is started, Broker will detect and configure all the required settings automatically.

Manual OpenLM Broker configuration

If auto-detect did not work, you can also add and configure the license manager manually. To do so:

1. Click **Add Port**.
2. Enter the TLM port number (default: **9090**).
3. Select **TASKING** from the "License Manager Type" drop-down menu. Click **Apply**.
4. Select the **Commands** node. Click **[...]** to the left of the "Update path for commands:" and browse to where **licdstat.exe** is located (typically "C:\Program Files (x86)\TASKING\taskinglm v1.4r3\bin\"). Click **Update** then **Apply**.
5. Click **data_inquiry** under Commands. Click **Execute**. Make sure that the output does not display an exit or error code.
6. Click **Restart Broker**.
7. Follow the steps in section 4 ("Configuring OpenLM Server"), below.



4. OpenLM Server configuration

Automatic OpenLM Server configuration through EasyAdmin

If you have followed the steps in the section above, OpenLM Broker should now be transmitting data to OpenLM Server. The final step is to approve the configuration in EasyAdmin:

1. Open the EasyAdmin interface either by accessing **http://<OpenLM Server IP>:7019/EasyAdmin2/** in your browser or through **Windows Start → OpenLM → OpenLM EasyAdmin User Interface**
2. In the License Servers window, hover over the red row that contains the details of the newly added TASKING License Management System (TLM) server entry and click **Approve**.

Stat...	Updated On	Name	Type	Q..	U..	B..	U..	Read License File
!		80@	OpenLM Generic	N/A	0	0	0.00	✓
✓	Up-to-date	Local AppManager	OpenLM App M...	Un...	0	0	0.00	

At this point, the TASKING license manager has been automatically added to OpenLM Server and configuration is complete.

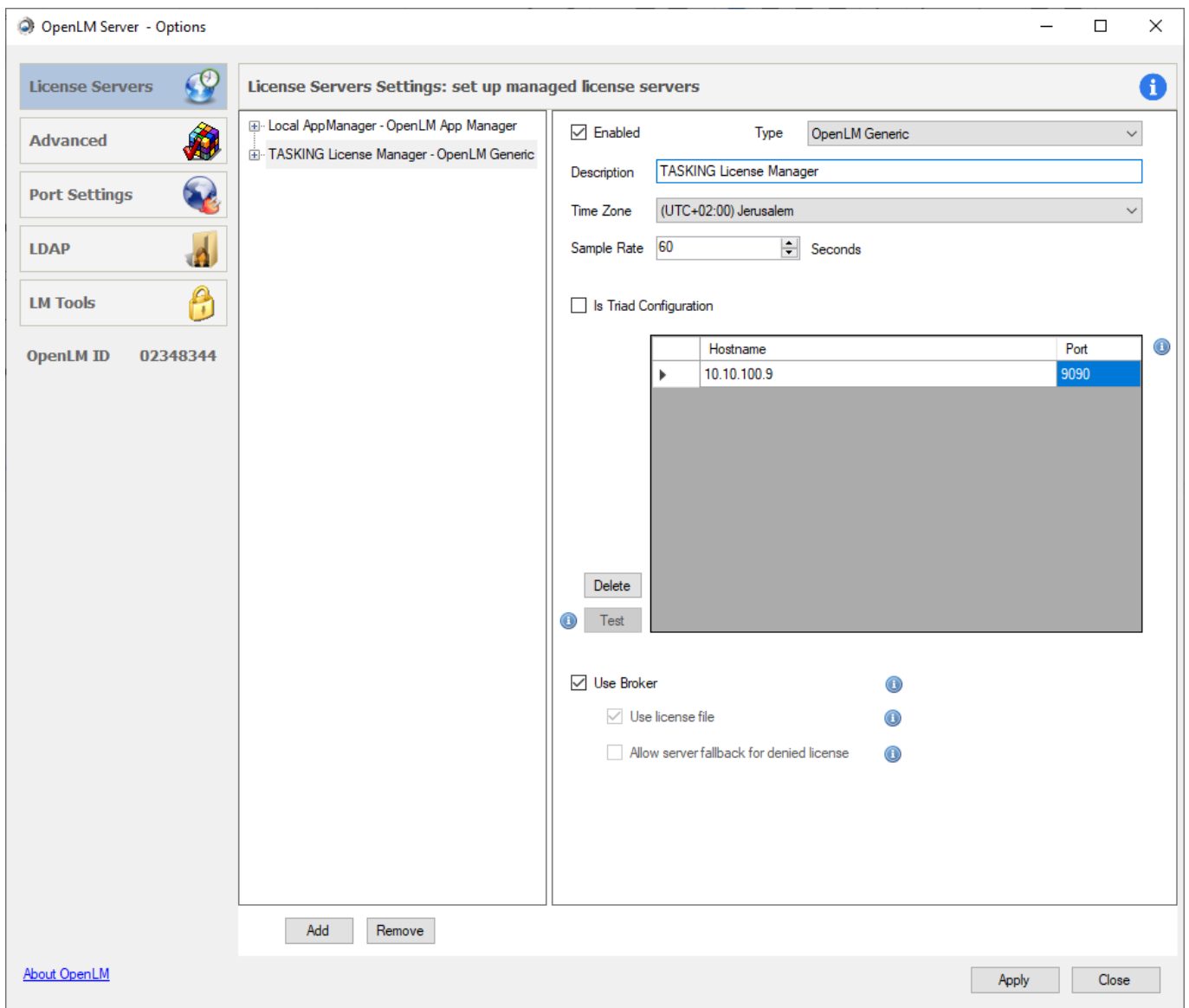
Manual OpenLM Server configuration

If automatic configuration has failed, you can manually configure OpenLM Server to connect to the OpenLM Broker installation located on the TASKING License Management System (TLM) machine.

The hostname and port settings must match those that have been configured for OpenLM Broker.

1. Select the **License Servers** tab.

2. Click **Add**.
3. From the **Type** drop-down menu, select **OpenLM Generic**.
4. Insert a description in the Description text box (e.g. "TASKING License Manager")
5. Set the **Time Zone** to where the license manager machine physically resides.
6. Enter the **Hostname** and **Port** number of the machine where the license manager is installed. The TLM default port is **9090**.
7. **Is Triad Configuration** box: unchecked.
8. **Use Broker** box: checked.
9. Click **Apply** and close the OpenLM Server configuration tool.

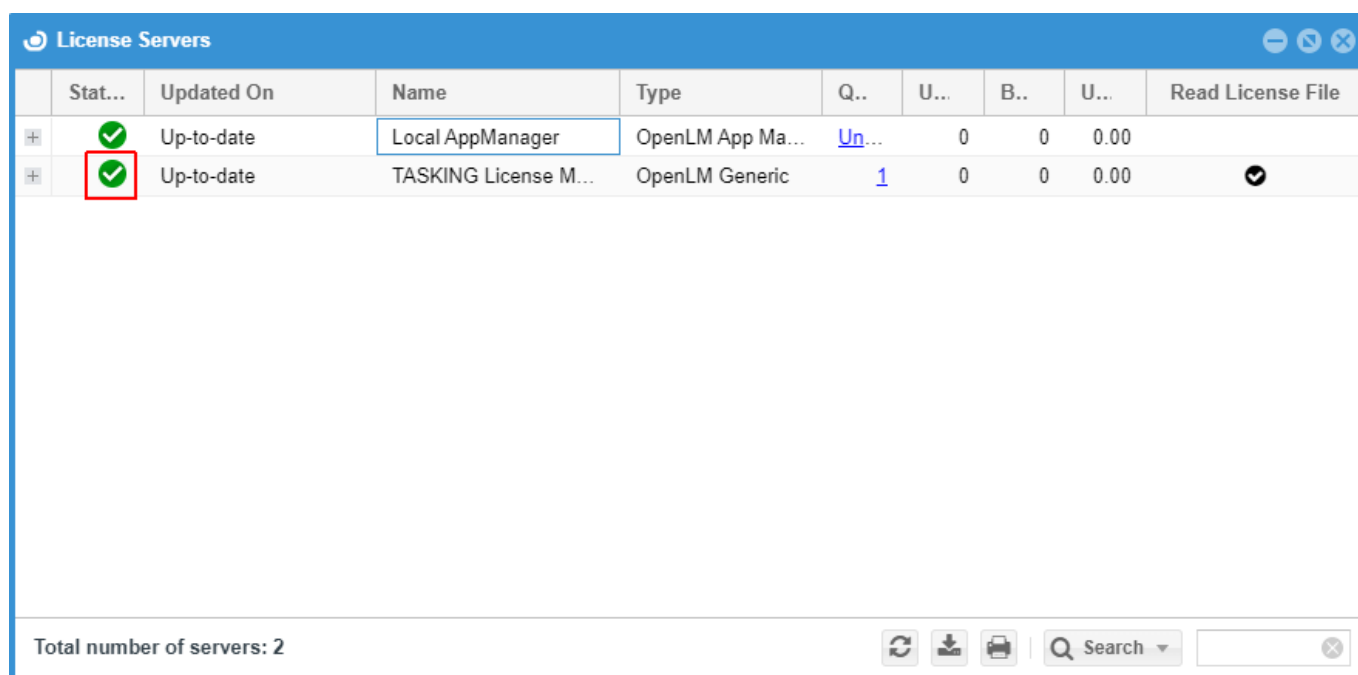


OpenLM Server is now configured to monitor the incoming data from OpenLM Broker.

5. How to verify your TASKING license manager configuration

To check if the TASKING License Management System (TLM) is being monitored correctly:

1. Open the EasyAdmin web application (access **http://<OpenLM Server hostname>/EasyAdmin2/index.html** in your browser)
2. Click **EasyAdmin Start** → **Widgets** → **License Servers**. Verify that the configured license manager(s) appears in the server list. A green circle node indicates an active connection to the license server.



	Stat...	Updated On	Name	Type	Q..	U...	B..	U...	Read License File
+	✓	Up-to-date	Local AppManager	OpenLM App Ma...	Un...	0	0	0.00	
+	✓	Up-to-date	TASKING License M...	OpenLM Generic	1	0	0	0.00	✓

Total number of servers: 2

Please note that sometimes it may take up to 3 minutes for the status indicator to change if this is a newly added connection.