

Scope

ESPRIT is one of the many license managers supported by OpenLM. In this step-by-step guide we will explore how to configure OpenLM to interface with the DPTC ESPRIT License Manager in order to monitor license usage and obtain license statistics.

Table of Contents:

[1. Requirements](#)

[1.1. Print out the license mapping details](#)

[1.2. Install the Generic / Text Only Printer on Windows 10](#)

[2. OpenLM Broker configuration](#)

[3. OpenLM Server configuration](#)

[4. Verify the ESPRIT License Manager configuration](#)

[5. Known Limitations](#)

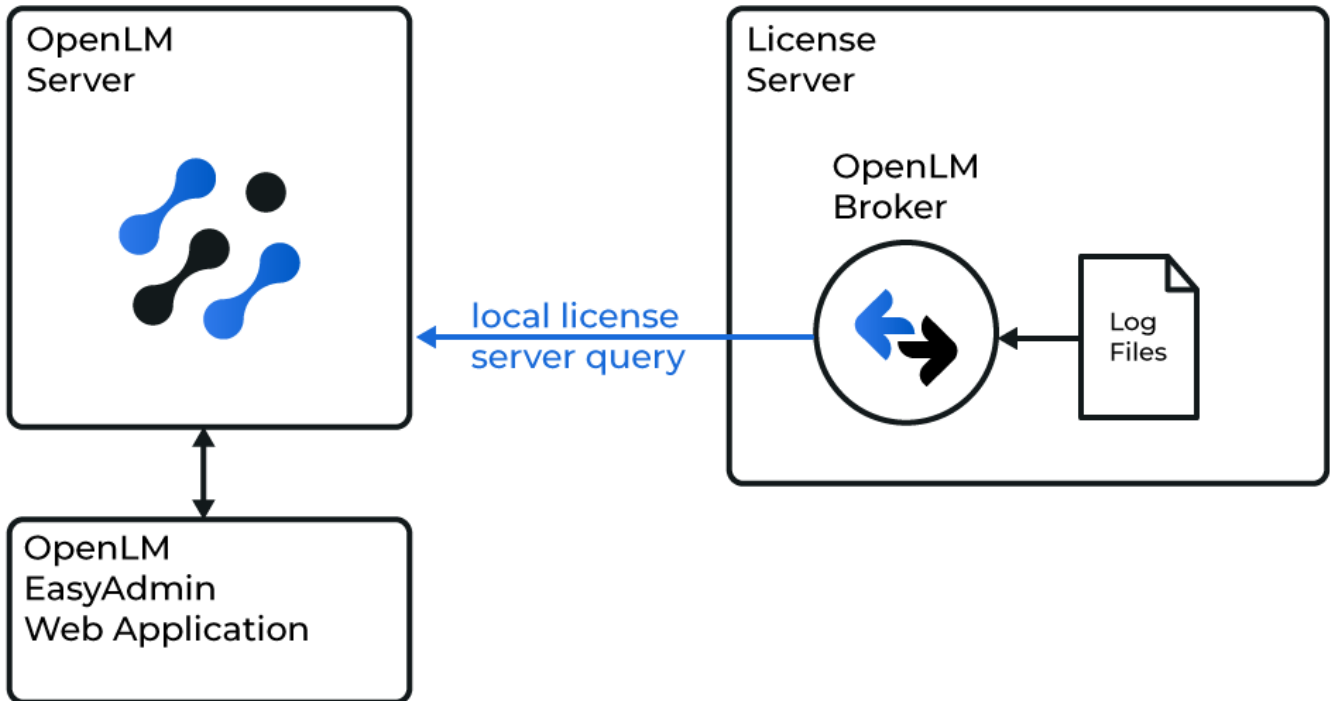


Diagram of how OpenLM Broker interfaces with ESPRIT License Manager and the OpenLM Server

1. Requirements

1. OpenLM Broker v4.10 or later installed and configured on the ESPRIT license manager machine.
2. OpenLM Server v4.6 or later installed and configured on a network computer.

1.1. Print out the license mapping details

In previous versions, Broker used only the Activation ID found in the ESPRIT log file to link it to a feature. Because this Activation ID could vary for the same feature at different times, it is no longer used. Beginning with v4.10, Broker requires users to configure mapping details which are found in the ESPRIT license printout file:

1. Launch the DP Technology Server Security Manager
2. On the left panel, locate the license(s) under the LocalHost node (e.g. E1009703_872223), right click → **Print**.



3. Select either **“Microsoft Print to PDF”** or **“Generic / Text Only Printer”** (recommended, see section 1.2 below) and choose a path to save the file.
4. (optional) If you used “Microsoft Print to PDF”, open the created PDF file and copy all contents into a regular *.txt file and save it. Beginning of line formatting (spaces) can be ignored.
5. Repeat steps 1-4 for each license that is present.

A sample license printout file looks like this:

```
***** E1009703_872223 *****
```

Company

Name: WAYNE ENTERPRISES, INC

Address1: 123 BAT RD

Address2:

City: GOTHAM CITY

State/Region: NY

Country: US

Postal Code: 102109

Customer Code: wayneent

General

Name: 2_Axis_Lathe(1)

Product: ESPRIT 20xx Series

Serial Number: E1009703

Activation Id: 872223

Status: eLicenseInUse

Client Id: bwayne@TLC-2ZQABC2

License Details

Lock Code: S5580101

Expiration Date: N/A

SMC Expiration Date: Saturday, October 31, 2020

Borrowable: True

Lease Expiration Date: N/A

License Type: eLicenseTypeNormal

Lock Device: eLockDpFloat

OEM: DP Technology

Miscellaneous

File Path:

C:\ProgramData\D.P.Technology\Security\Licenses\2_Axis_Lathe(1).dptlic

Comments:

Features

1-Base License

2-Editor

3-DNC

10-Surface Modeler

11-SolidTurn Traditional

21-Post Processor

22-DWG / DXF

23-IGES

24-STEP

25-VDA-FS

27-Solid Modeler

29-VBA

30-Machine Simulation

31-STL

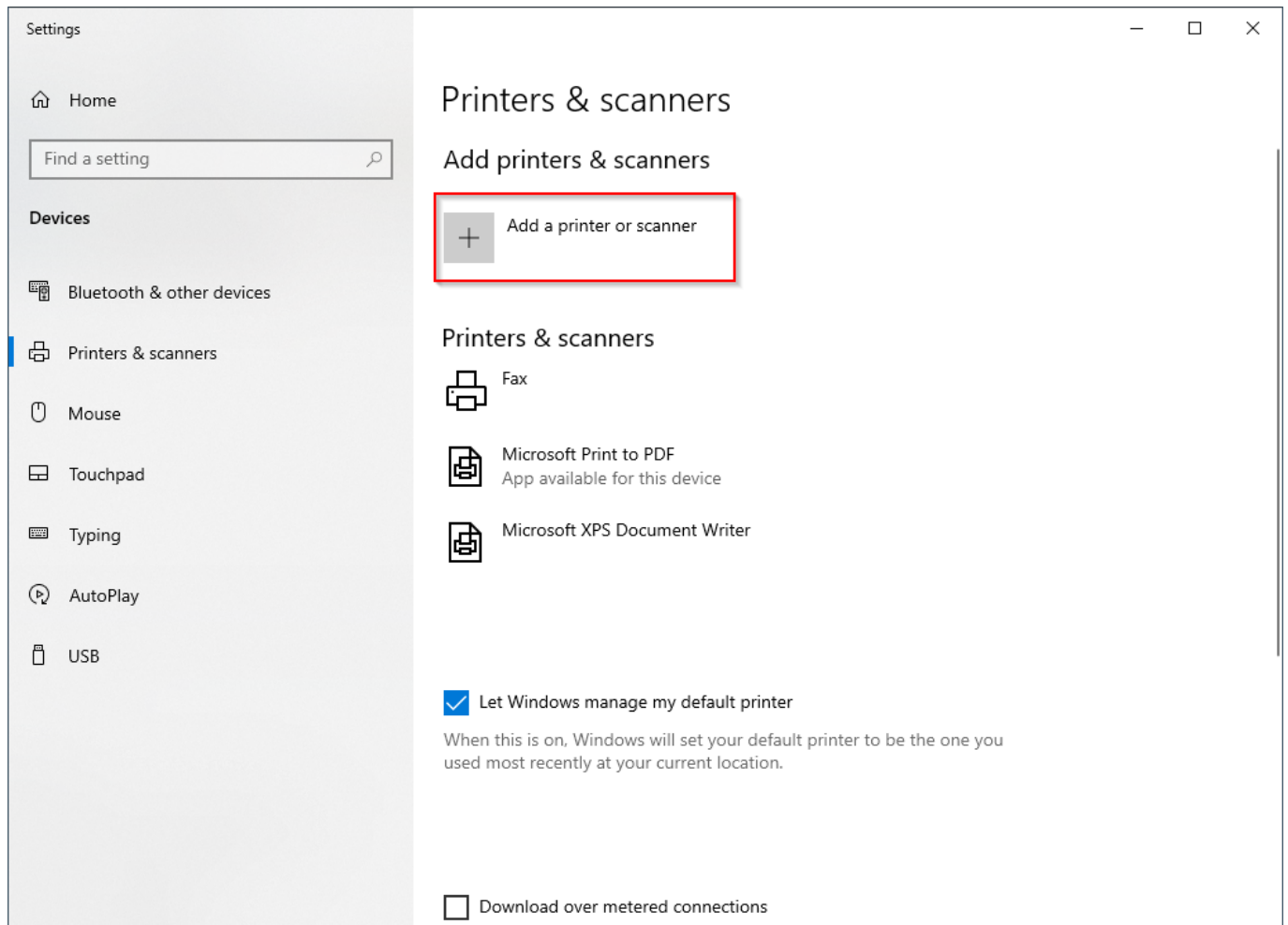
36-Cutting Tool KB

38-Parasolid SE SW 3DM

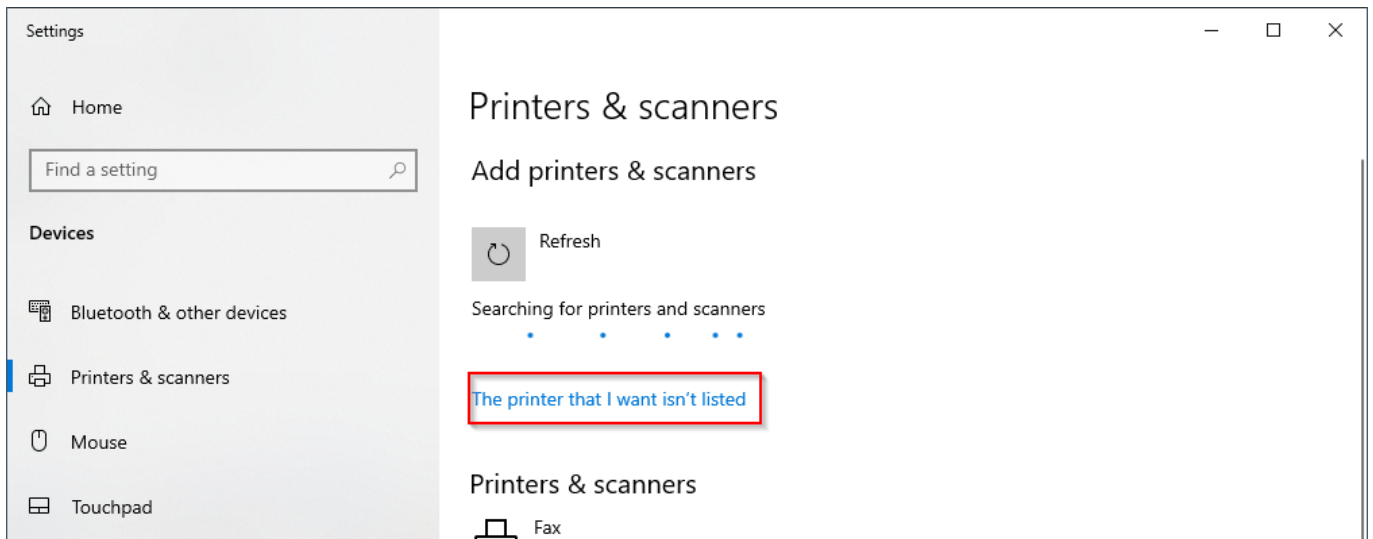
1.2. Install the Generic / Text Only Printer on Windows 10

Obtaining the ESPRIT license printout file is done by using the “Print” function. Having a “Generic / Text Only Printer” avoids an extra step and the need to use a PDF viewer to read the file as the output is saved to a text file directly. Here is how to install it:

1. In the Windows Search bar, type “add printer”.
2. Select the result that says “**Add printer or scanner**” under System settings.
3. In the Settings / Printers & Scanners window, click “**Add a printer or scanner**”.



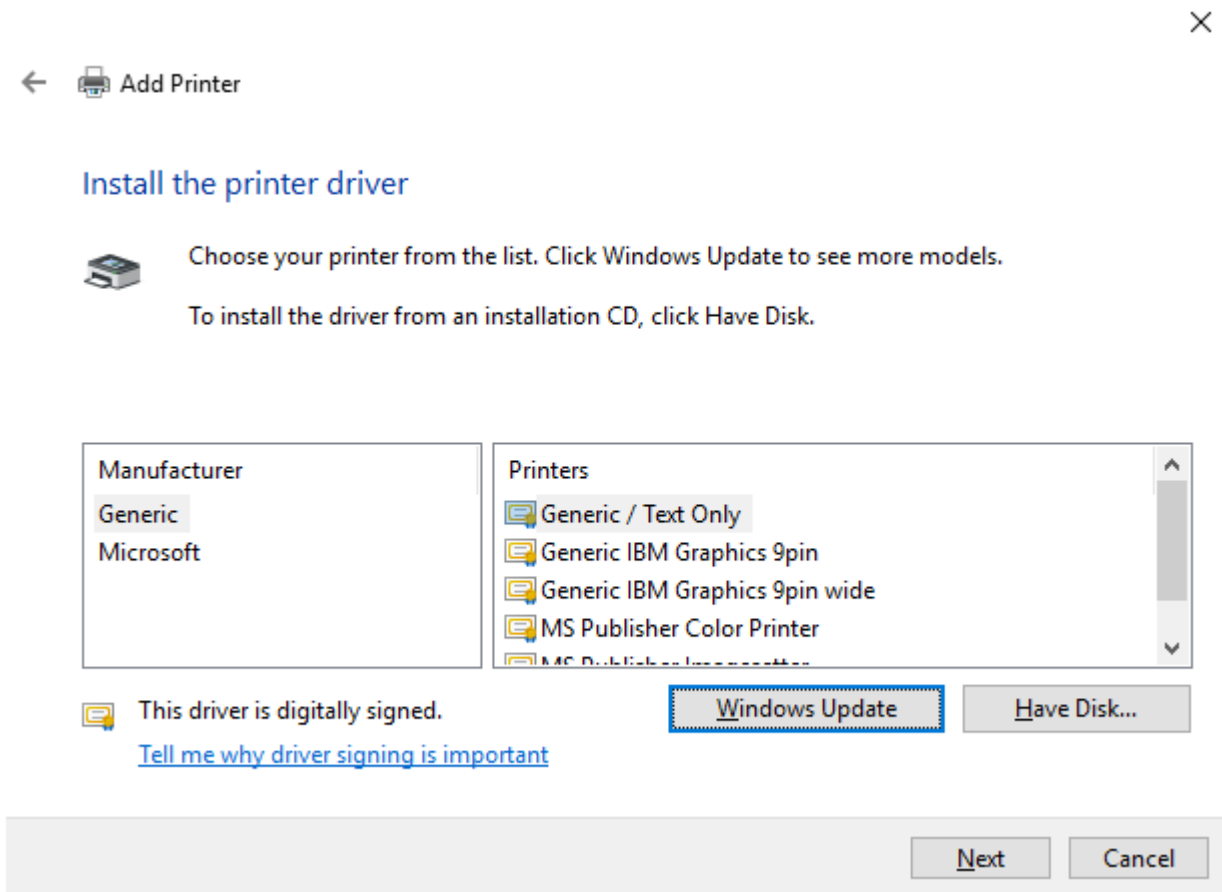
4. Wait for 5 - 10 seconds until the **“The printer that I want isn’t listed”** link appears. Click on it.



5. Select the “**Add a local printer or network printer with manual settings**” radio button and click **Next**.

6. Click “Use an existing port:” and select “**FILE: (Print to File)**” from the drop down menu.

7. Select “Generic” as the Manufacturer and the “Generic / Text Only” driver. Click **Next**.

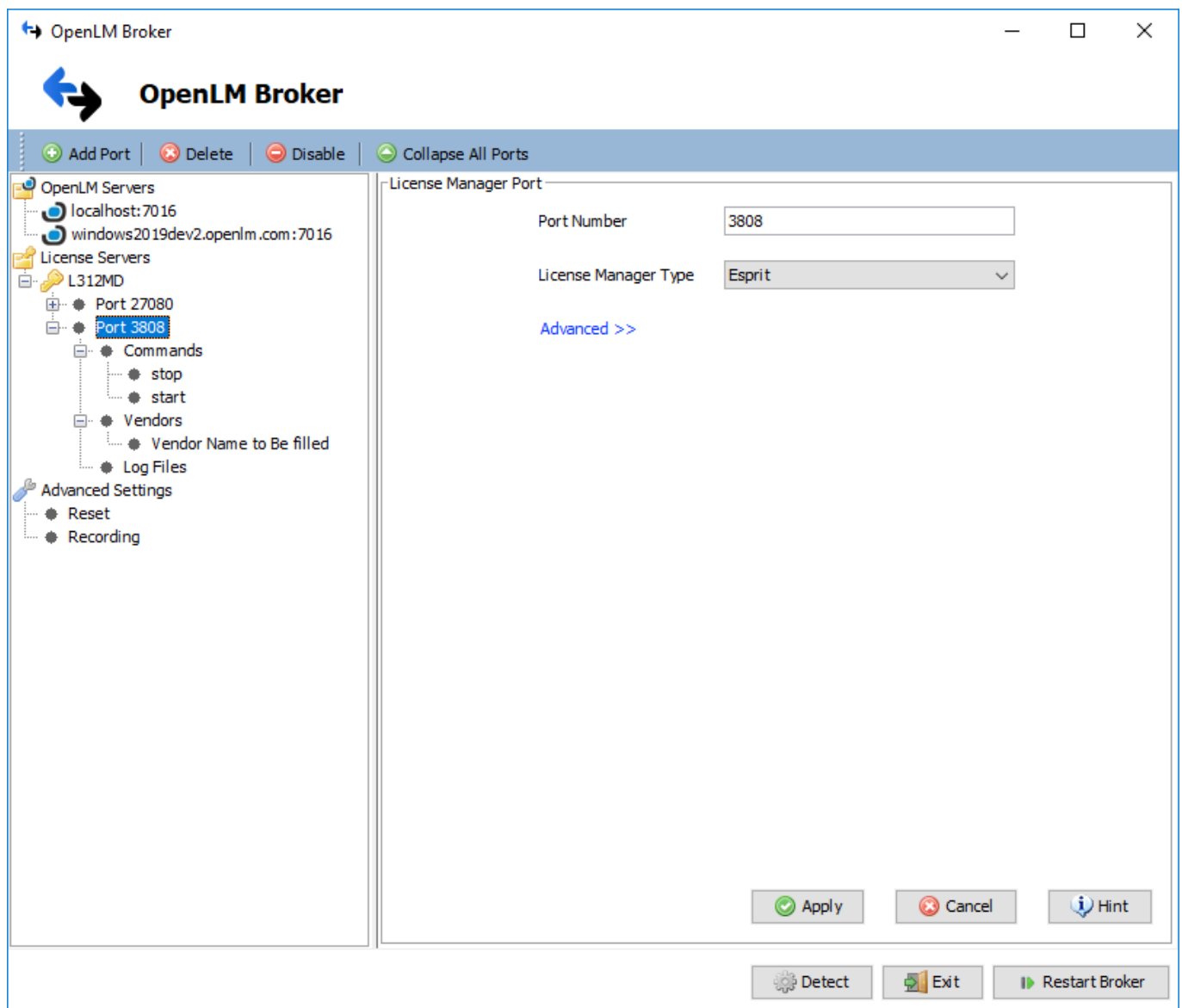


8. **“Use the driver that is currently installed (recommended)”** and click **Next**.
9. Give the printer a name or leave as-is then click **Next**.
10. Select **“Do not share this printer”** and click **Next**.
11. Click **Finish** to close the wizard.

You should now have a virtual text-only printer installed. Whenever you select this printer as the device to print from, the action will open a “Save Print Output As” dialog window where you will have to specify a file. You can save it with a *.prn extension or select “All Files” from the Save as type menu and specify any other extension (e.g. *.txt).

2. OpenLM Broker configuration

1. Download and install the latest OpenLM Broker version. Follow the [Broker configuration guide](#) for step-by-step instructions.
2. Select the hostname node (e.g. L312MD) and then click on **Add Port**.

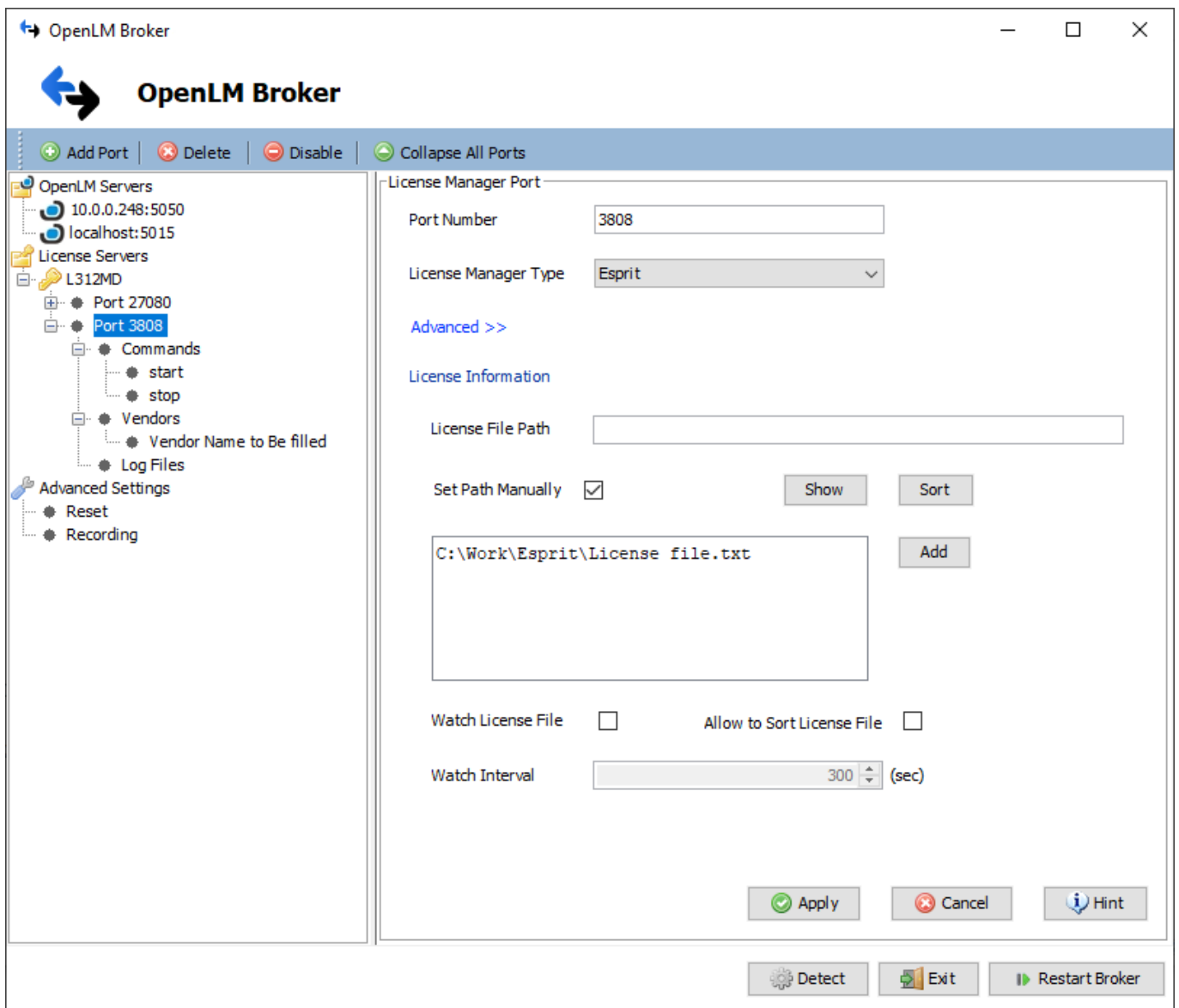


3. Enter any port number and select the License Manager Type as **ESPRIT** from the drop-down menu.

4. Click **Advanced**.

5. Check **“Set Path Manually”**.

6. Click **“Add”** and select the license printout file described in section “1.1. Print out the license mapping details” of this document. Repeat this for each license that was printed and will be monitored.



7. Click **Apply**.

8. Under the newly created node, right-click **Log Files** → **Add Log File**.

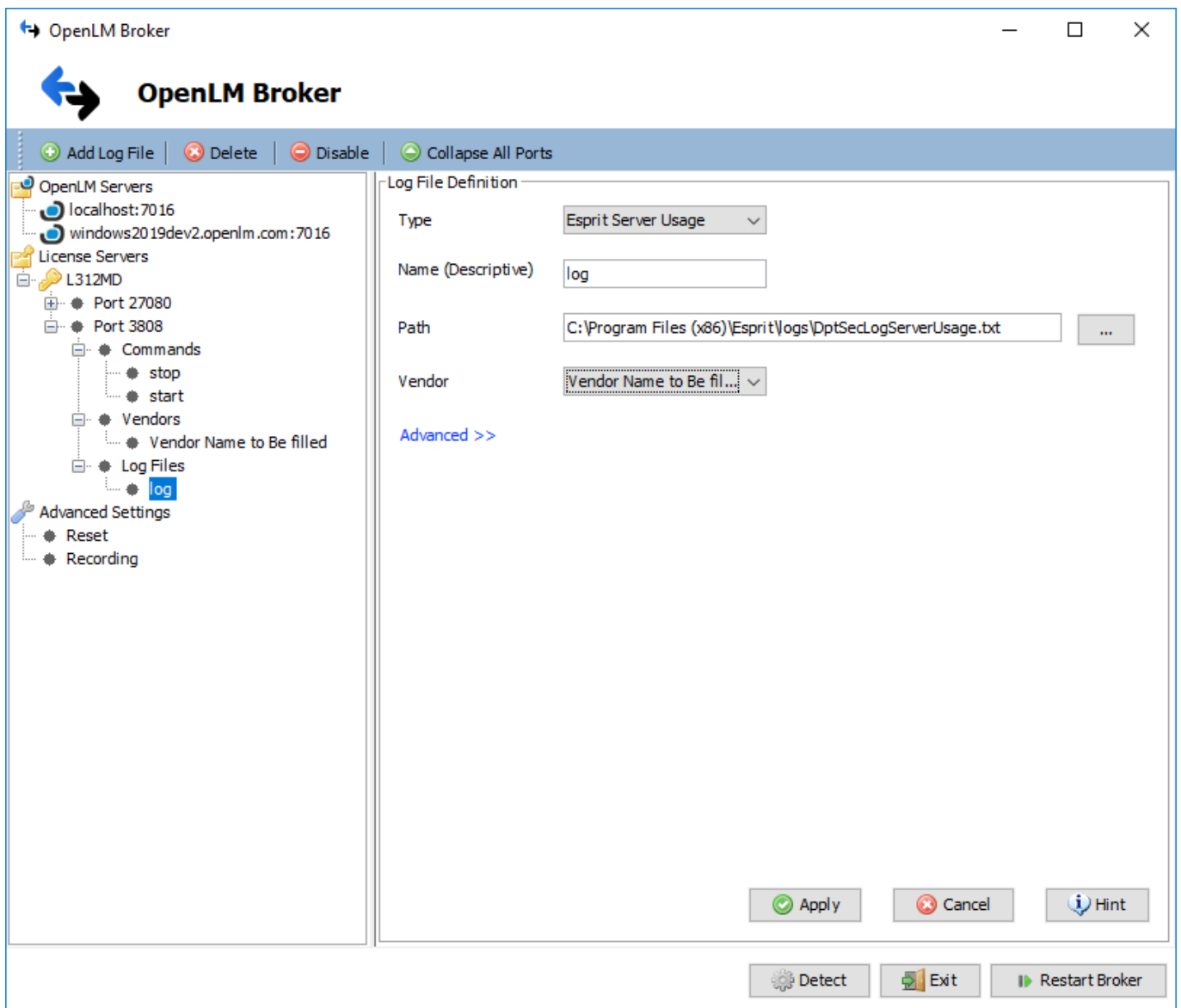
9. Configure the Log File Definition screen as follows:

Type - ESPRIT Server Usage

Name (Descriptive) - a name to help you identify the purpose of the log

Path - click on the [...] button and navigate to the logs folder where your installation of ESPRIT is located. The required file is named DptSecLogServerUsage.txt

Vendor - select the Vendor that you have defined in the Vendors node (by default: "Vendor Name to Be Filled", can be changed)



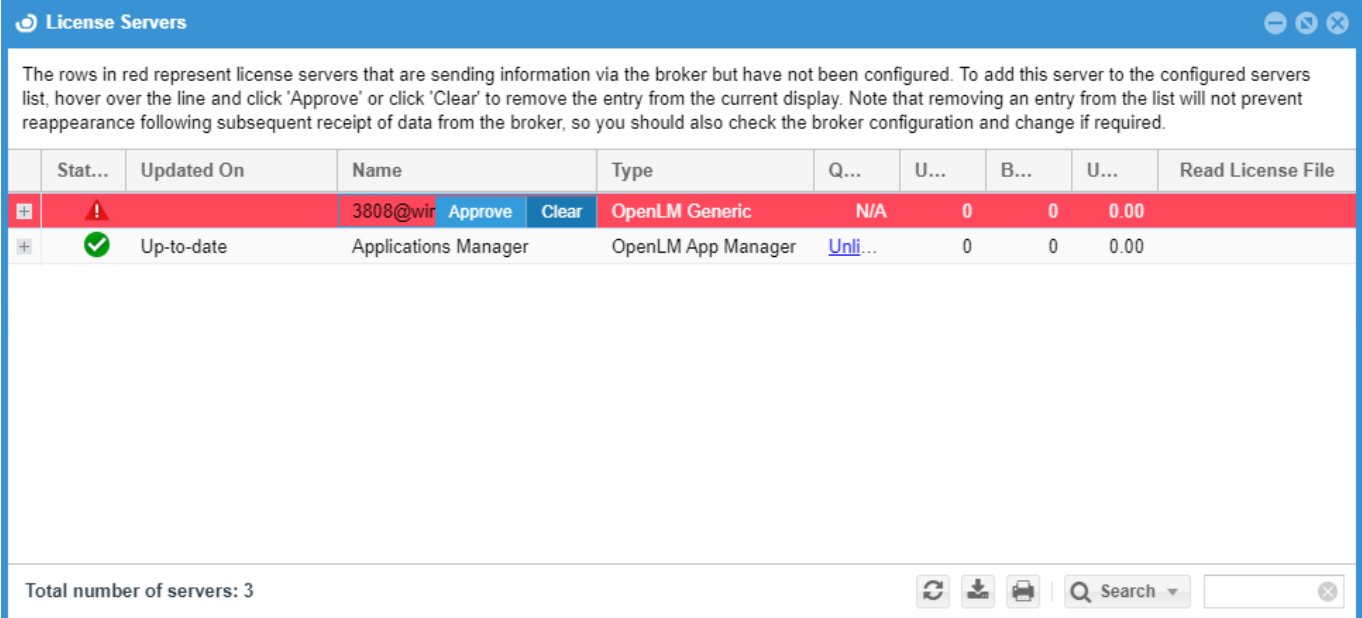
10. Click **Apply** to save the changes.

11. Click **Restart Broker**, wait a couple of seconds then finally click **OK** on the "Service started successfully" pop-up window.

12. Open the EasyAdmin interface either by accessing **http://<Server IP>:7019** in your browser or through the **Start Menu → OpenLM → OpenLM EasyAdmin User Interface** shortcut)

13. In the License Servers window, click "Approve" on the ESPRIT LM entry that has been

added automatically.



The rows in red represent license servers that are sending information via the broker but have not been configured. To add this server to the configured servers list, hover over the line and click 'Approve' or click 'Clear' to remove the entry from the current display. Note that removing an entry from the list will not prevent reappearance following subsequent receipt of data from the broker, so you should also check the broker configuration and change if required.

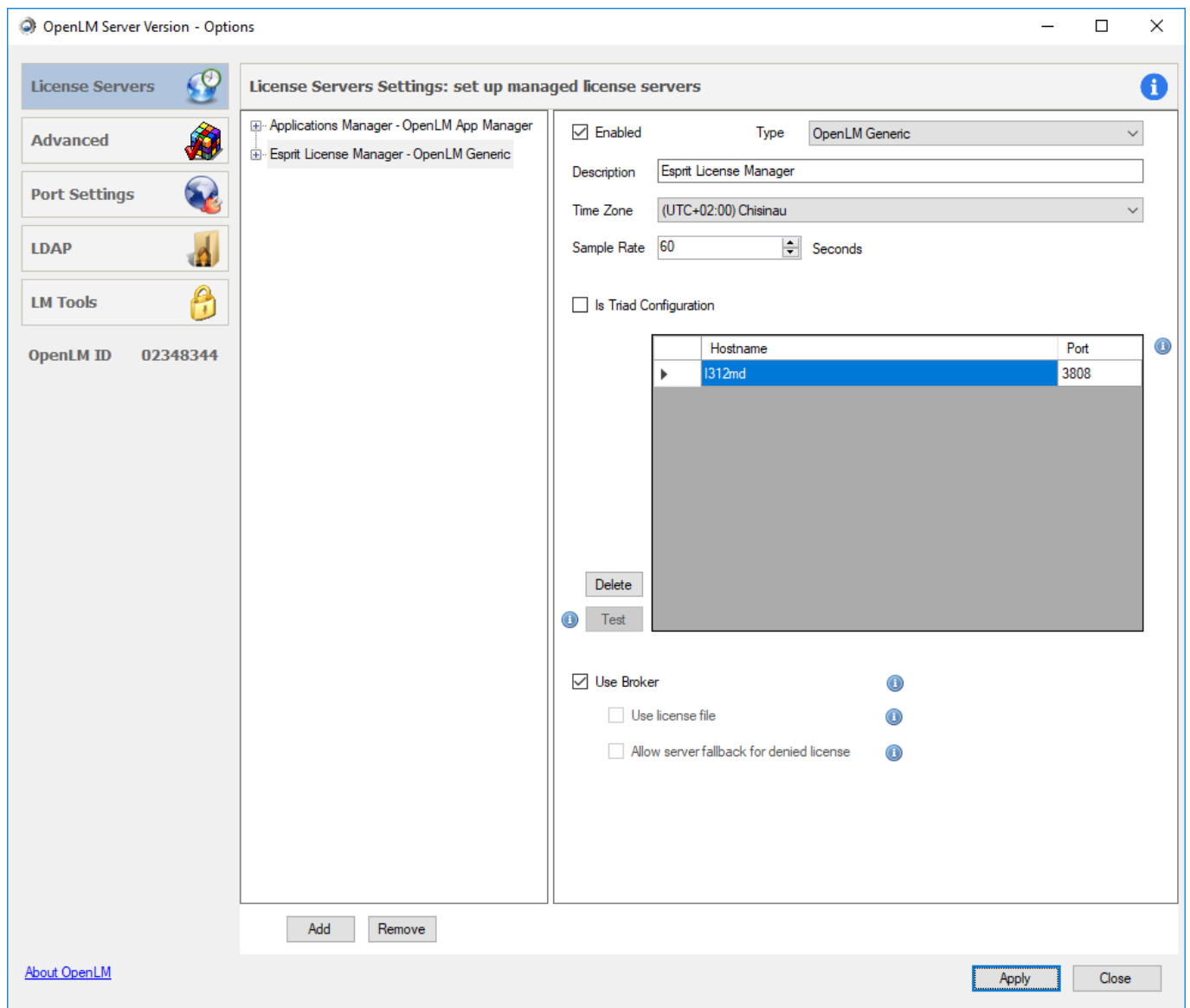
	Stat...	Updated On	Name	Type	Q...	U...	B...	U...	Read License File
+	⚠		3808@wir	OpenLM Generic	N/A	0	0	0.00	
+	✓	Up-to-date	Applications Manager	OpenLM App Manager	Unli...	0	0	0.00	

Total number of servers: 3

3. OpenLM Server configuration

Although it is possible to manually add the ESPRIT license manager in the OpenLM Server Configuration tool, we recommend letting EasyAdmin handle the entire process automatically once you have approved the license manager in the License Servers window (step 10 above). The following instructions are provided mainly for reference purposes in case the automatic configuration process fails.

1. Open the OpenLM Server configuration tool (Start Menu → OpenLM → OpenLM Server)
2. Click **Add**.
3. Configure the server screen as follows:



Enabled - checked

Type - OpenLM Generic

Description - a name to identify the ESPRIT server

Time Zone - the time zone where the ESPRIT server is located

Sample Rate - leave default (60 seconds)

Is Triad Configuration - unchecked

Hostname - the ESPRIT LM hostname or IP

Port - the ESPRIT LM communication port

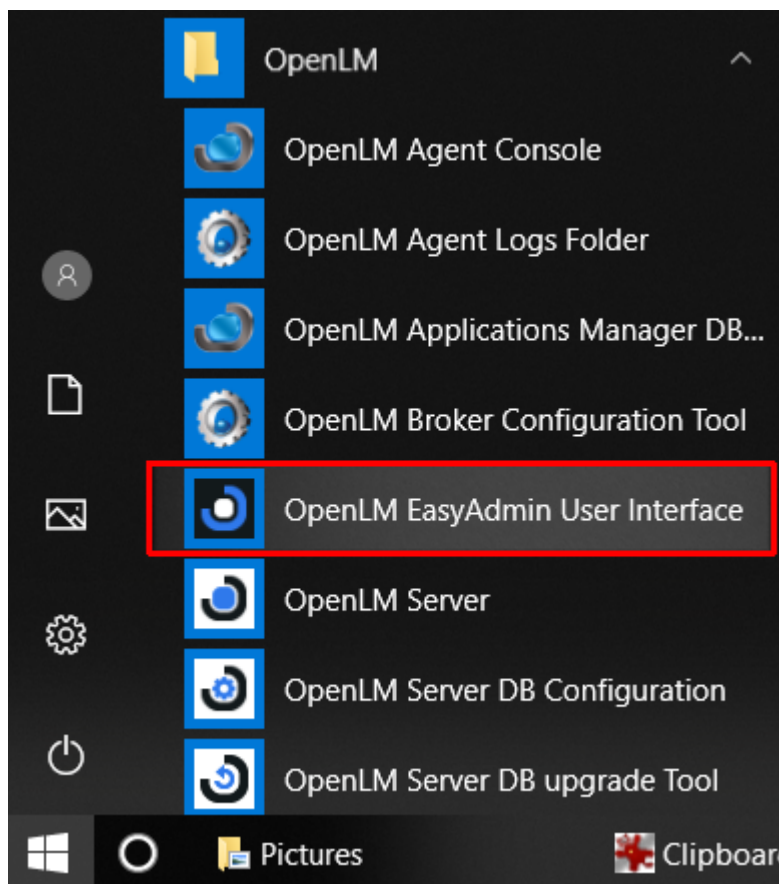
Use Broker - checked

4. Click **Apply** to save the configuration.

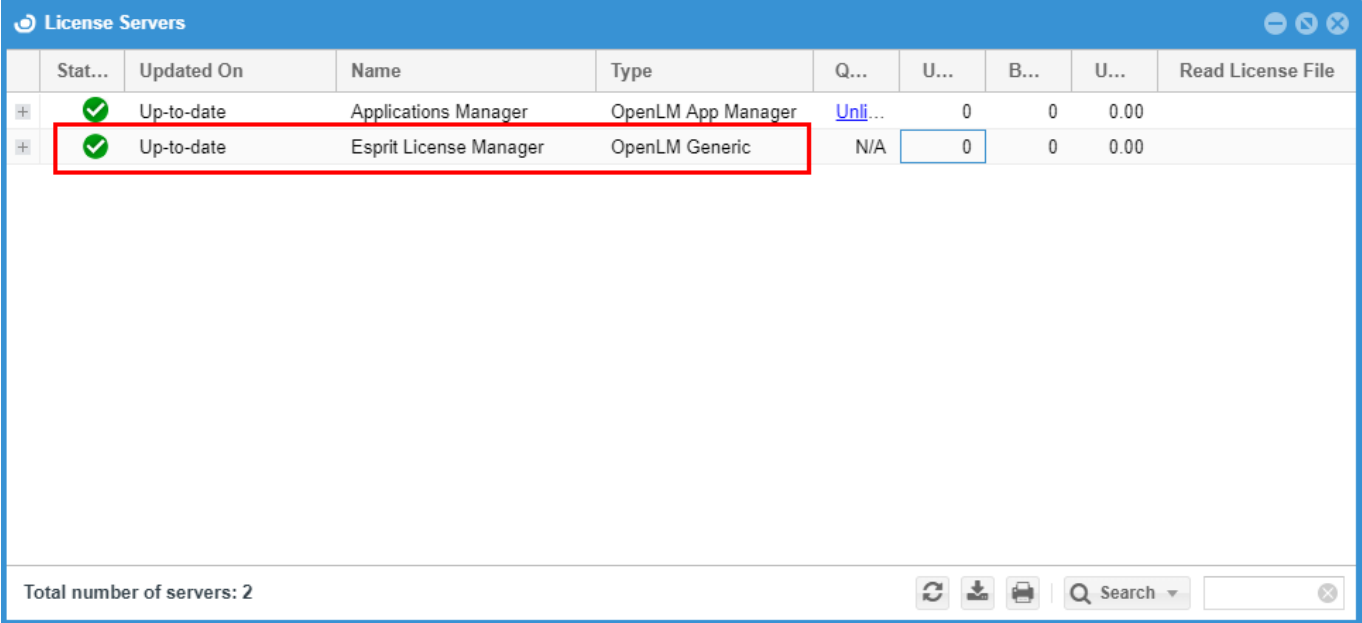
4. Verify the ESPRIT License Manager configuration

To see if the ESPRIT License Manager is being monitored correctly:

1. Open the EasyAdmin web application either by going to the address of your EasyAdmin Server (i.e. <http://localhost:7019/EasyAdmin2/>) or by accessing the shortcut in the **Windows Start Menu** → **OpenLM** → **OpenLM EasyAdmin User Interface**



2. Click EasyAdmin Start → Widgets→ License Servers. The **License Servers** window appears. Verify that the configured license manager appears on the list. A green circle node indicates an active connection to a license server.



	Stat...	Updated On	Name	Type	Q...	U...	B...	U...	Read License File
+	✓	Up-to-date	Applications Manager	OpenLM App Manager	Unli...	0	0	0.00	
+	✓	Up-to-date	Esprit License Manager	OpenLM Generic	N/A	0	0	0.00	

Total number of servers: 2

5. Known Limitations

- License denials are not currently monitored
- The quantity of licenses cannot currently be read by the Broker so it displayed as “Unlimited”