

FlexNet Embedded is one of the many license managers supported by OpenLM. In this step-by-step guide we will explore how to configure OpenLM to interface with a FlexNet Embedded license manager in order to monitor license usage and obtain license statistics.

Table of Contents:

[1. How does it work?](#)

[2. OpenLM Server configuration](#)

[2.1 How to find the FlexNet Embedded server's port number](#)

[2.2 Additional configuration for Nvidia customers](#)

[3. Verify the FlexNet Embedded license manager configuration](#)

[4. Known limitations](#)

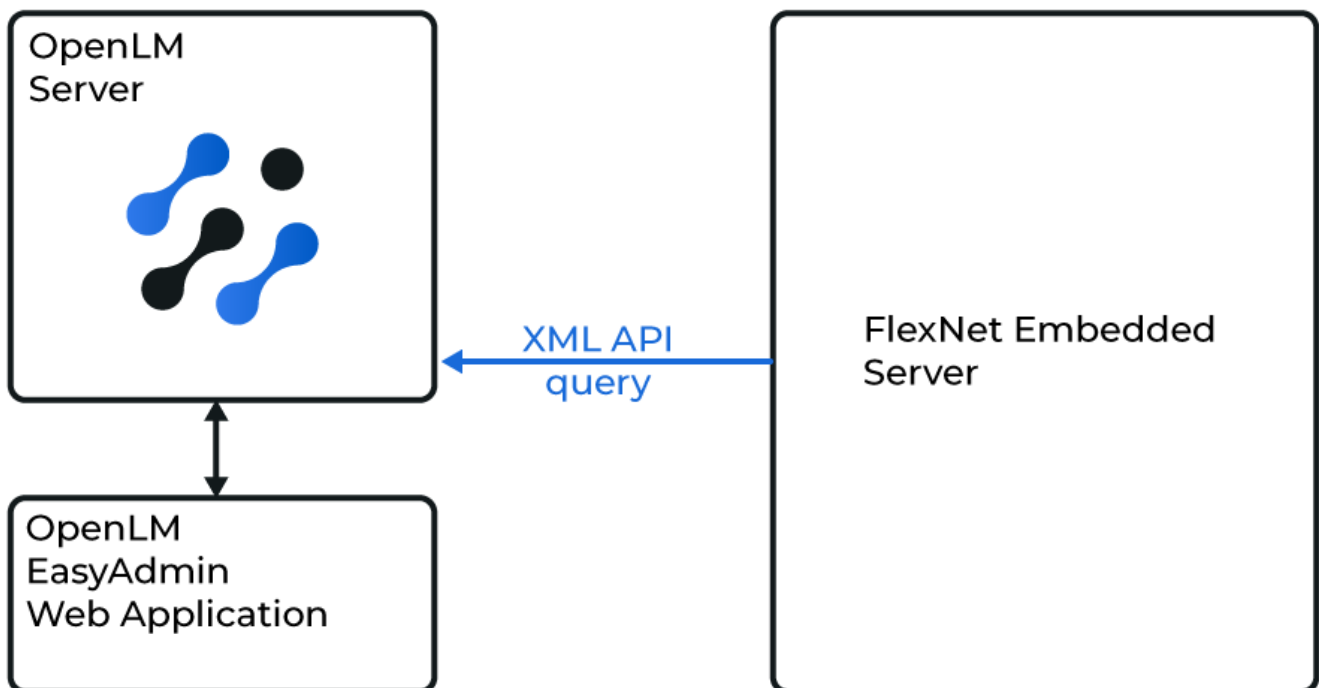


Diagram of how the OpenLM Server interfaces with the FlexNet Embedded server

1. How does it work?

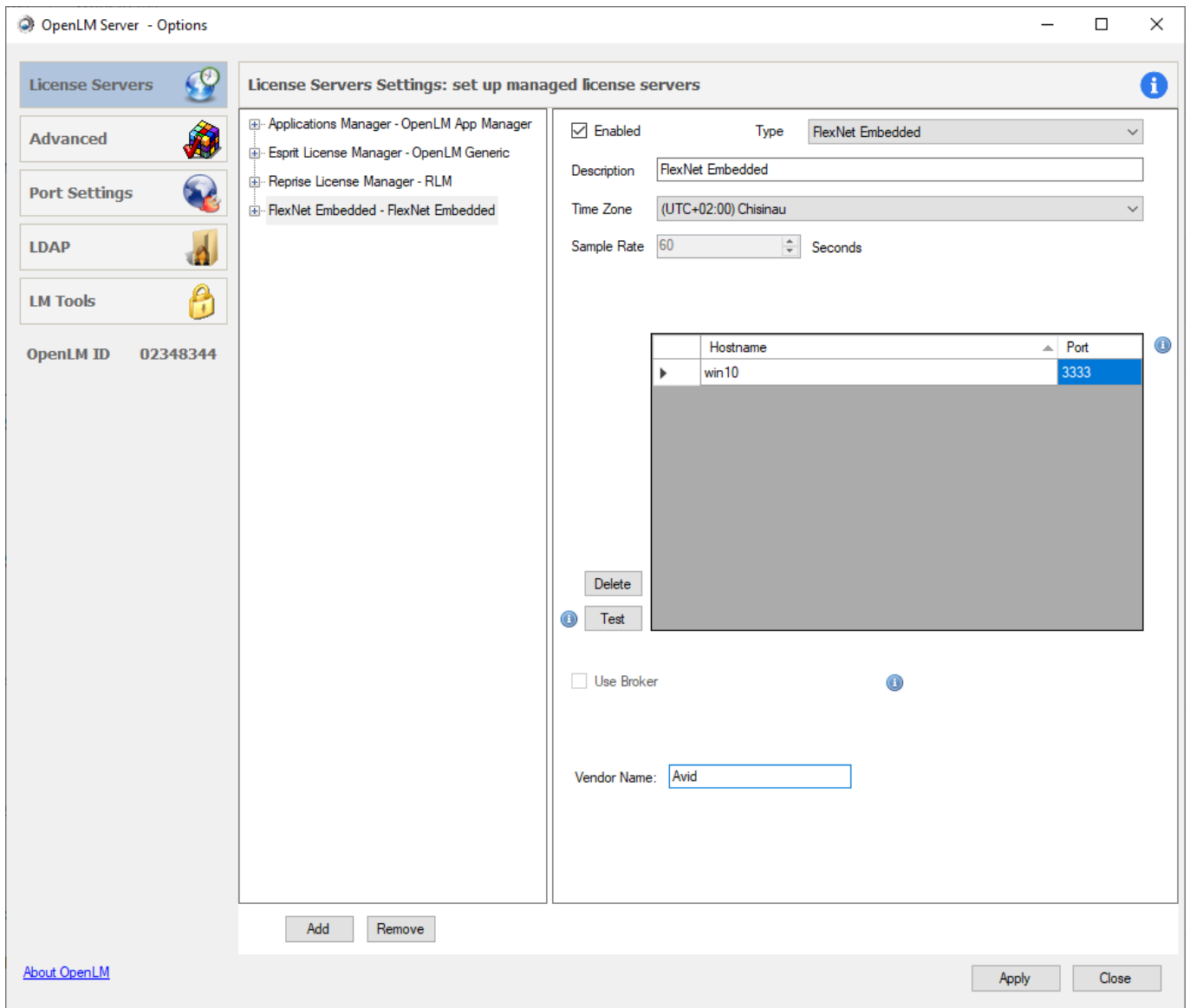
OpenLM Server queries the FlexNet Embedded server's XML API directly to retrieve data about license usage, statistics and other information.

This data is then aggregated by OpenLM Server and displayed to the user through easily accessible reports in the EasyAdmin user interface.

For more information, please check out our [What is FlexNet Embedded?](#) article.

2. OpenLM Server configuration

1. Open the OpenLM Server configuration tool (**Start Menu → OpenLM → OpenLM Server**)
2. Select the **License Servers** tab.
3. Click **Add**.
4. Configure the server screen as follows:



Type: FlexNet Embedded

Description: a name to recognize the FlexNet Embedded server

Time Zone: timezone that matches the license server's physical location

Hostname: the FlexNet Embedded server's IP or hostname

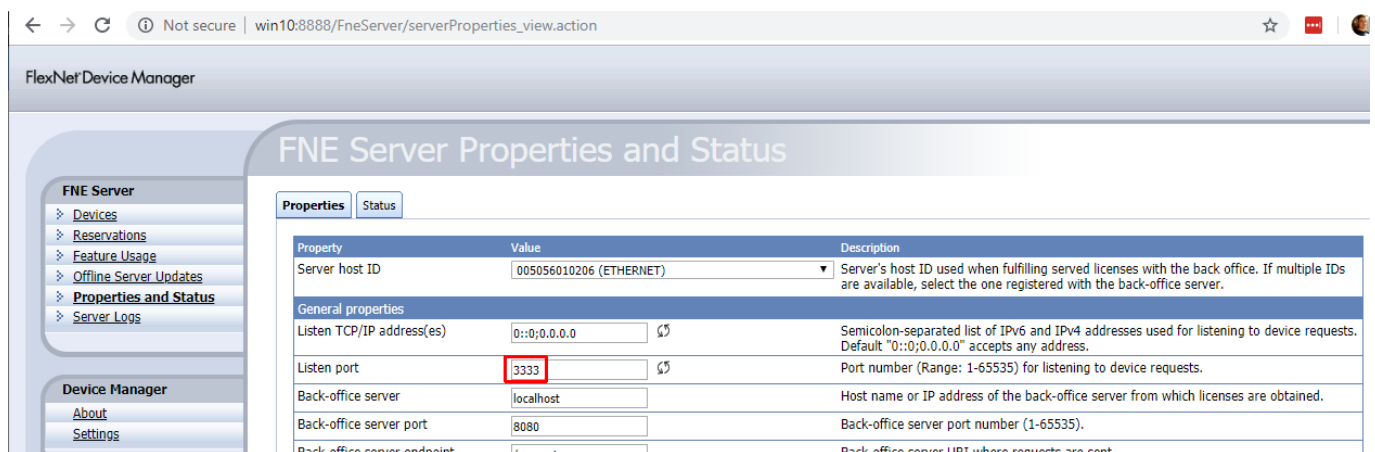
Port: See how to find the port in section 2.1 below

Vendor Name: the vendor of the software you are running (e.g. "Avid", "NVIDIA", etc.)

5. Click **Test** to verify that the configuration is working.
6. Click the **Apply** button to save the configuration.
7. Click **Close**.

2.1 How to find the FlexNet Embedded server's port number

1. Open the FlexNet Embedded Web UI address (e.g. <http://win10:8888/FneServer/>)
2. On the left panel, click **Properties and Status**.
3. Locate the **Listen port** and write it down.



The screenshot shows the 'FNE Server Properties and Status' page in the FlexNet Device Manager. The 'Listen port' field is highlighted with a red box, indicating the server's port number is 3333. The page includes a table of properties and a left-hand navigation menu.

Property	Value	Description
Server host ID	005056010206 (ETHERNET)	Server's host ID used when fulfilling served licenses with the back office. If multiple IDs are available, select the one registered with the back-office server.
General properties		
Listen TCP/IP address(es)	0::0:0:0:0:0	Semicolon-separated list of IPv6 and IPv4 addresses used for listening to device requests. Default "0::0:0:0:0:0" accepts any address.
Listen port	3333	Port number (Range: 1-65535) for listening to device requests.
Back-office server	localhost	Host name or IP address of the back-office server from which licenses are obtained.
Back-office server port	8080	Back-office server port number (1-65535).
Back-office server endpoint	/fneapi	Back-office server URL where requests are sent.

2.2 Additional configuration for Nvidia customers

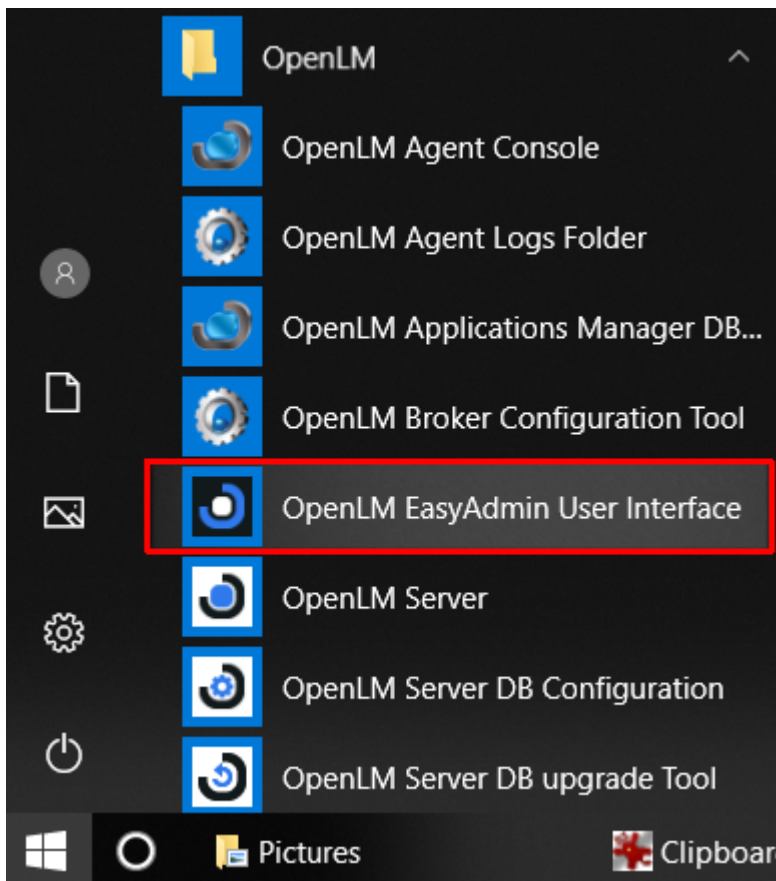
Nvidia customers that use FNE may sometimes be unable to query the XML API remotely (any machine other than the one that FlexNet Embedded is installed). In such cases, an additional tweak to the FNE configuration file is required:

1. Open the translator-config.properties file (typically located at **C:\Program Files (x86)\NVIDIA\License Server\Tomcat\webapps\fne\WEB-INF\classes\translator-config.properties**)
2. Locate and edit the RESTRICT_TO_LOCALHOST variable to **false**, e.g.:
RESTRICT_TO_LOCALHOST=false
3. Save the file and restart the FlexNet Embedded server

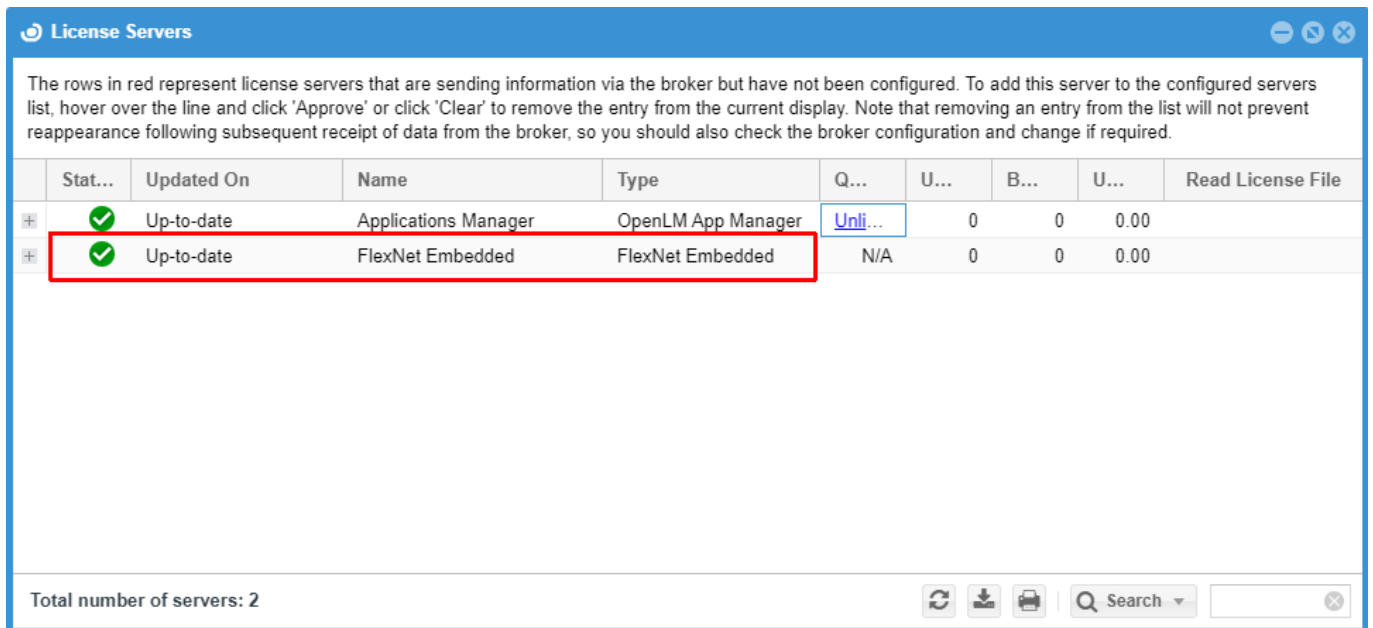
3. Verify the FlexNet Embedded license manager configuration

To verify that the FlexNet Embedded license manager is being monitored correctly:

1. Open the EasyAdmin web application either by going to the address of your EasyAdmin Server (i.e. <http://localhost:7019/EasyAdmin2/>) or by accessing the shortcut in the Windows Start Menu → OpenLM → OpenLM EasyAdmin User Interface



2. Click **EasyAdmin Start** → **Widgets** → **License Servers**. The License Servers window appears. Verify that the configured license manager appears on the list. A green circle node indicates an active connection to a license server.



The rows in red represent license servers that are sending information via the broker but have not been configured. To add this server to the configured servers list, hover over the line and click 'Approve' or click 'Clear' to remove the entry from the current display. Note that removing an entry from the list will not prevent reappearance following subsequent receipt of data from the broker, so you should also check the broker configuration and change if required.

	Stat...	Updated On	Name	Type	Q...	U...	B...	U...	Read License File
+	✓	Up-to-date	Applications Manager	OpenLM App Manager	Unli...	0	0	0.00	
+	✓	Up-to-date	FlexNet Embedded	FlexNet Embedded	N/A	0	0	0.00	

Total number of servers: 2

Refresh Download Print Search

4. Known limitations

- License denials are not currently monitored
- There is no support for multiple server redundancy