

Scope

OpenLM incorporates the capability to monitor usage of Greenhills licenses. There are two options to query this type of License Server:

1. The quick method:

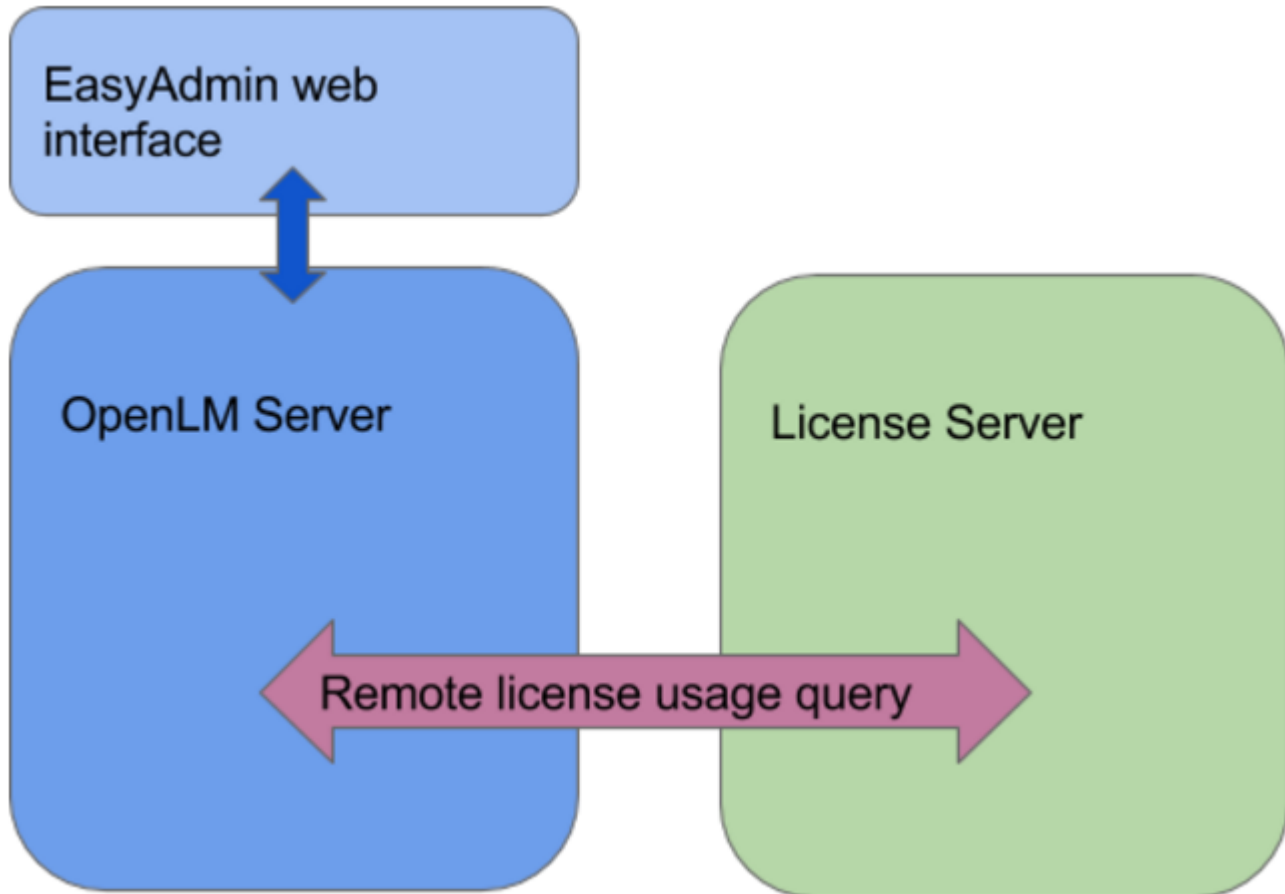
Remotely query the license server from the OpenLM Server. This method only provides license usage information.

2. The robust method:

Query the license server locally by the OpenLM Broker and propagate the information back to the OpenLM Server. This option provides additional benefits, such as enhanced robustness to communication failure and bypassing of Networking and Security limitations. This method may provide additional benefits in the future, such as reading and parsing the Greenhills log files.

Quick method

Configure the OpenLM server to remotely monitor the Greenhills license manager:



1. [After installing the OpenLM Server](#), click the Windows Start → “All Programs” → OpenLM → “Configure OpenLM Server-Start here”. The OpenLM Server configuration tool opens.
2. Select the “License Servers” tab, and click the ‘Add’ button.
3. Type in the license server parameters (Type, Hostname or IP, Port number and time zone). In the example below, these are (Greenhills, GH_license_server, 2009, and Pacific time) respectively. In order to find the Server name and port to be configured, you can open a command window on the Greenhills license server machine as an administrator, and run the following command:

“<full path>\lic_find_licenses.exe” -w -l <host name>
4. Type in a descriptive name for the license server, and click ‘Apply’ and “Restart now”.
5. Select the Greenhills license server’s timezone (e.g. Pacific time) from the dropdown selection.

5. "Is Triad Configuration": should be kept unchecked.

6. **Use Broker** checkbox:

- Checked (Default): The OpenLM Server actively queries the license manager. Keep this configuration when not employing the OpenLM Broker.
- Unchecked: Usage information is obtained solely via the OpenLM Broker installation on the License manager machine.

OpenLM Server Version 4.5.206.123 - Options

License Servers Settings: set up managed license servers

License Servers

- GreenHills LM - GreenHills
- Autodesk 2 - FLEXlm

Advanced

Port Settings

LDAP

LM Tools

OpenLM ID 45568374

Enabled Type GreenHills

Description GreenHills LM

Time Zone (UTC+02:00) Jerusalem

Sample Rate 60 Seconds

Is Triad Configuration

Hostname	Port
win8olmprod3	600

Delete

Test

Use Broker

Use license file

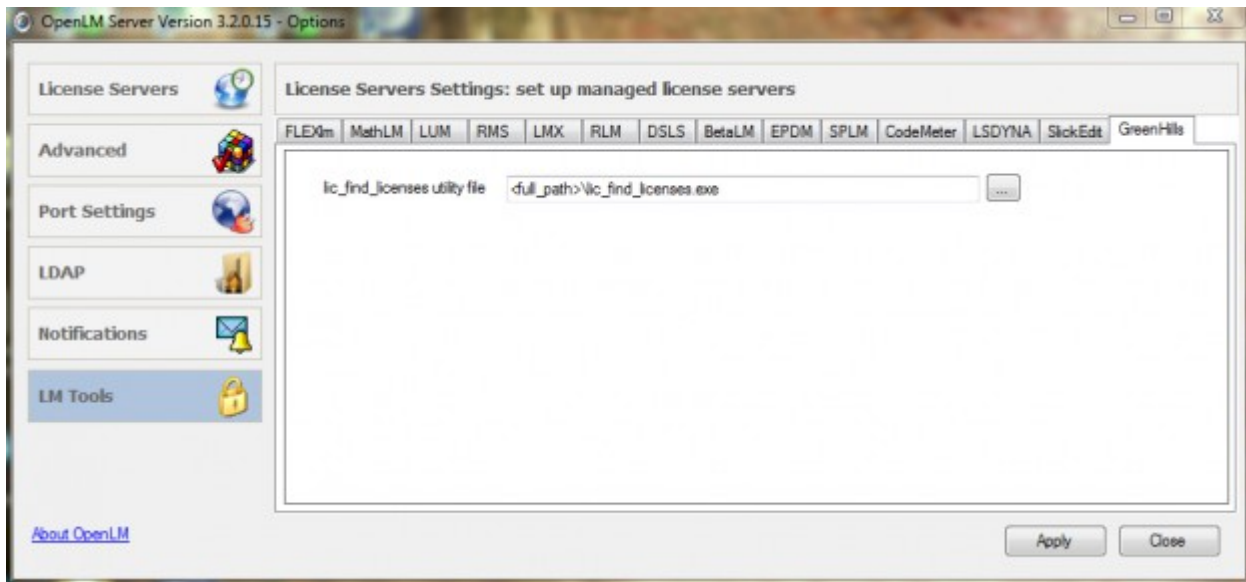
Allow server fallback for denied license

Add Remove

Apply Close

7. Check the directory in which the license manager commands (Full path of the specific

license inquiry program) is located.



8. Click **Apply**, and the consequent **“Restart now”** button.

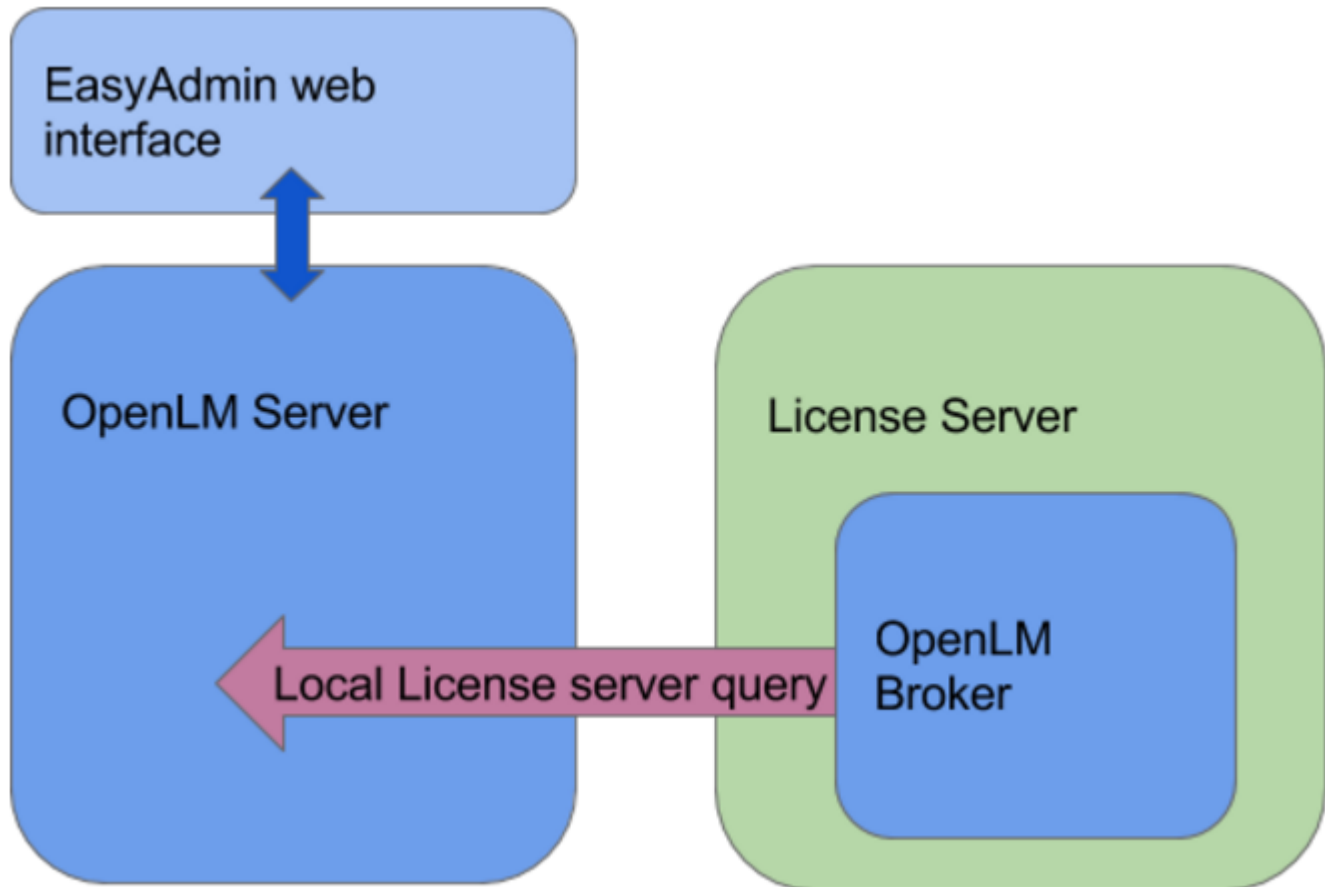
Thats it !

The OpenLM Server is now set to monitor the Greenhills license manager. Check the License Server’s activity by clicking the ‘Check’ button. A text would follow. This text is a query of the License server. It indicates whether a connection to that server is established, and the License server is active.

Robust method:

Configuring the OpenLM Server is usually enough for monitoring licensed applications. The OpenLM Broker is an optional component, which provides [many benefits for monitoring different types of license managers](#).

In the case of the Greenhills license manager, the benefits of installing the OpenLM Broker are enhanced robustness to communication failure, through message buffering, and bypassing of Networking and Security limitations



OpenLM Broker installation

Download and install the latest OpenLM Broker version. Follow the installation and configuration instructions on the [OpenLM Broker Application Note](#).

OpenLM Server configuration for Greenhills

The OpenLM Server configuration will be exactly the same as performed in the previous method, i.e. without the Broker, except that the “OpenLM Server remotely queries license manager” check box should be cleared.

OpenLM Broker configuration for Greenhills

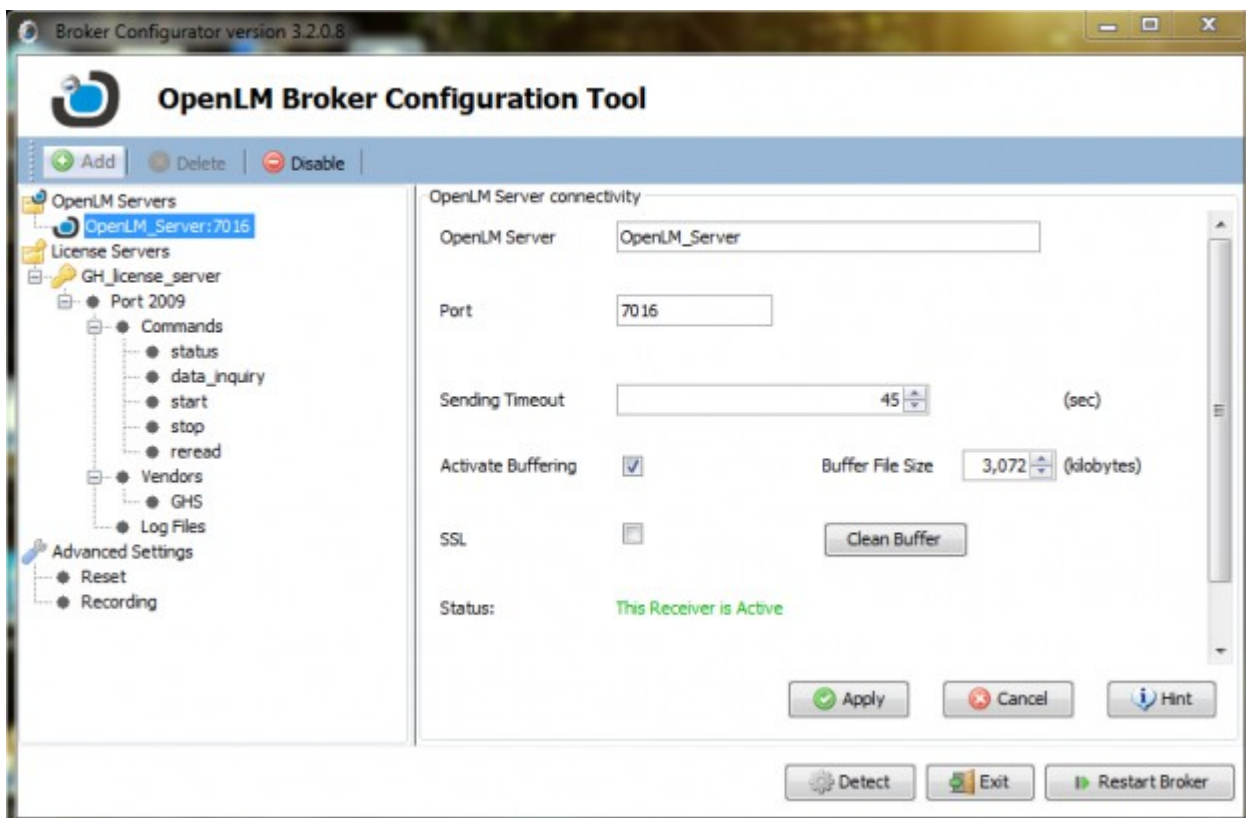
Configure The OpenLM Broker to interface the Greenhills license server and the OpenLM Server.

1. The license server name and port number should be configured exactly as they were on

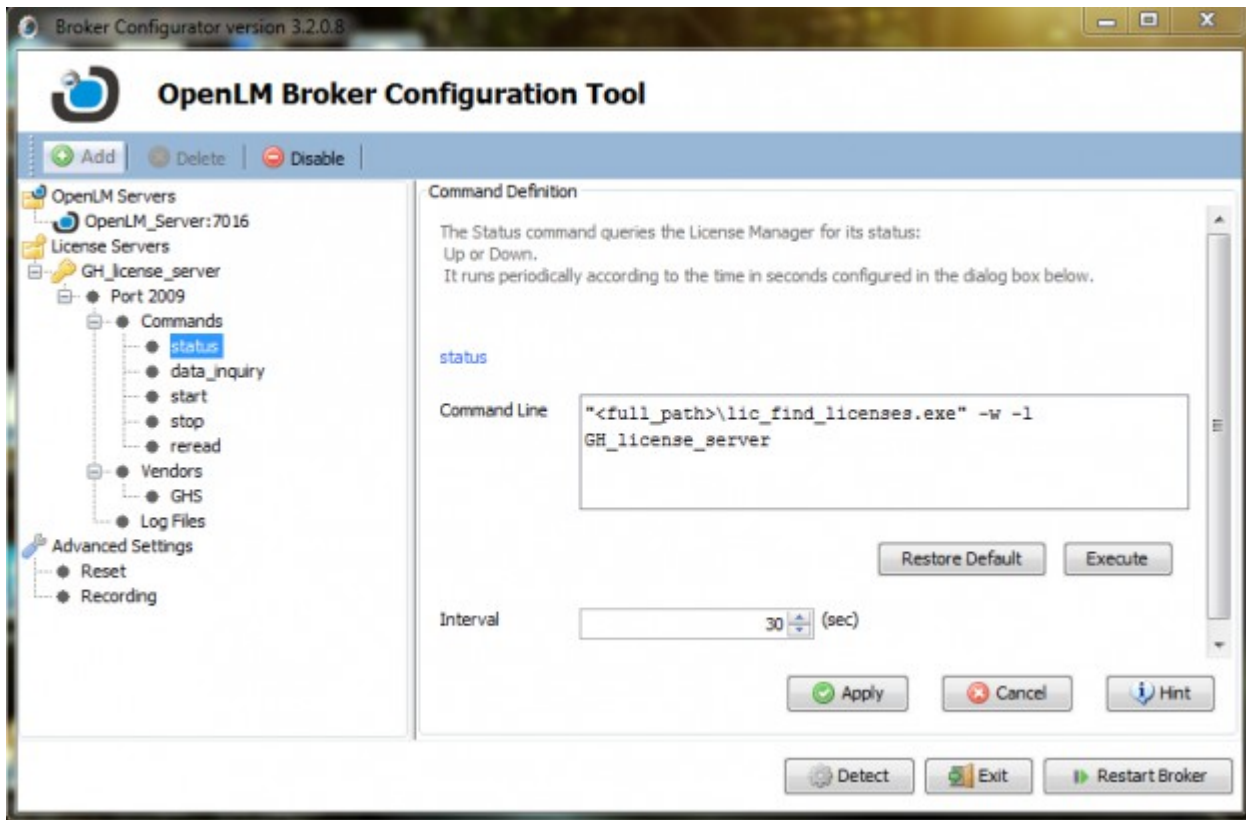
the OpenLM Server configuration tool (e.g. GH_license_server and 2009 respectively)

2. The OpenLM hostname and port (e.g. OpenLM_Server and the default 7016)

3. The vendor name should be set correctly (e.g. "GHS").



4. Inspect the 'status' and "data_inquiry" commands. Verify the correctness of their full path (see image below) and click the 'Execute' button to check their functionality.



The OpenLM System is now configured to query the Greenhills license server locally via the OpenLM Broker and present license usage on the OpenLM EasyAdmin web application.