

This document describes the steps required to interface OpenLM with McNeel's Zoo License Manager in order to monitor license usage and obtain license statistics.

Table of Contents:

[1. Requirements](#)

[2. Monitoring capabilities and features](#)

[3. OpenLM Broker configuration](#)

[4. OpenLM Server configuration](#)

[5. How to verify your Zoo License Manager configuration](#)

1. Requirements

To query the Zoo License Manager the following components must be installed:

1. OpenLM Server v4.7 or higher installed on a machine in your organization
2. OpenLM Broker v4.8.8 or higher installed on the same machine as the Zoo License Manager

2. Monitoring capabilities and features

For Zoo LM, OpenLM collects license totals and license usage data. Denials are monitored but they are all currently classified as "Limit Reached" and only those that have a readable Feature Name are recorded in the system.

Since querying the license manager is done through OpenLM Broker, administrators get additional benefits such as:

- Buffered communication with OpenLM Server in order to overcome temporary network failures
- Remotely start / stop the license manager service

- 1-second resolution for license usage reports

3. OpenLM Broker configuration

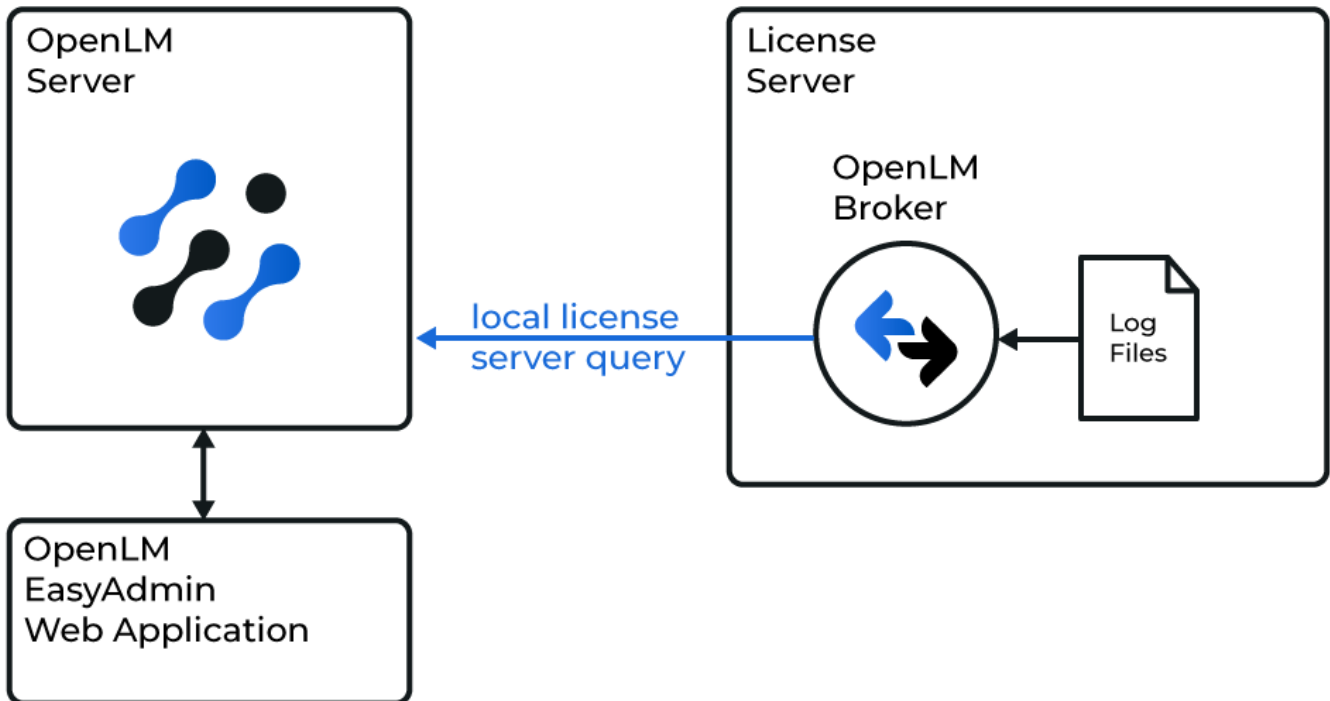
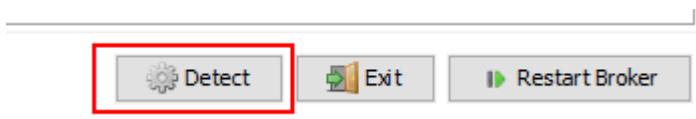


Diagram of how OpenLM interfaces with the Zoo License Manager

The OpenLM Broker component should be installed on the same machine where the Zoo License Manager resides ([guide](#)) and connected to an OpenLM Server ([guide](#)).

Automatic OpenLM Broker configuration

To automatically configure OpenLM Broker with Zoo License Manager, click **Detect** in the bottom right corner of the Broker configuration tool window:

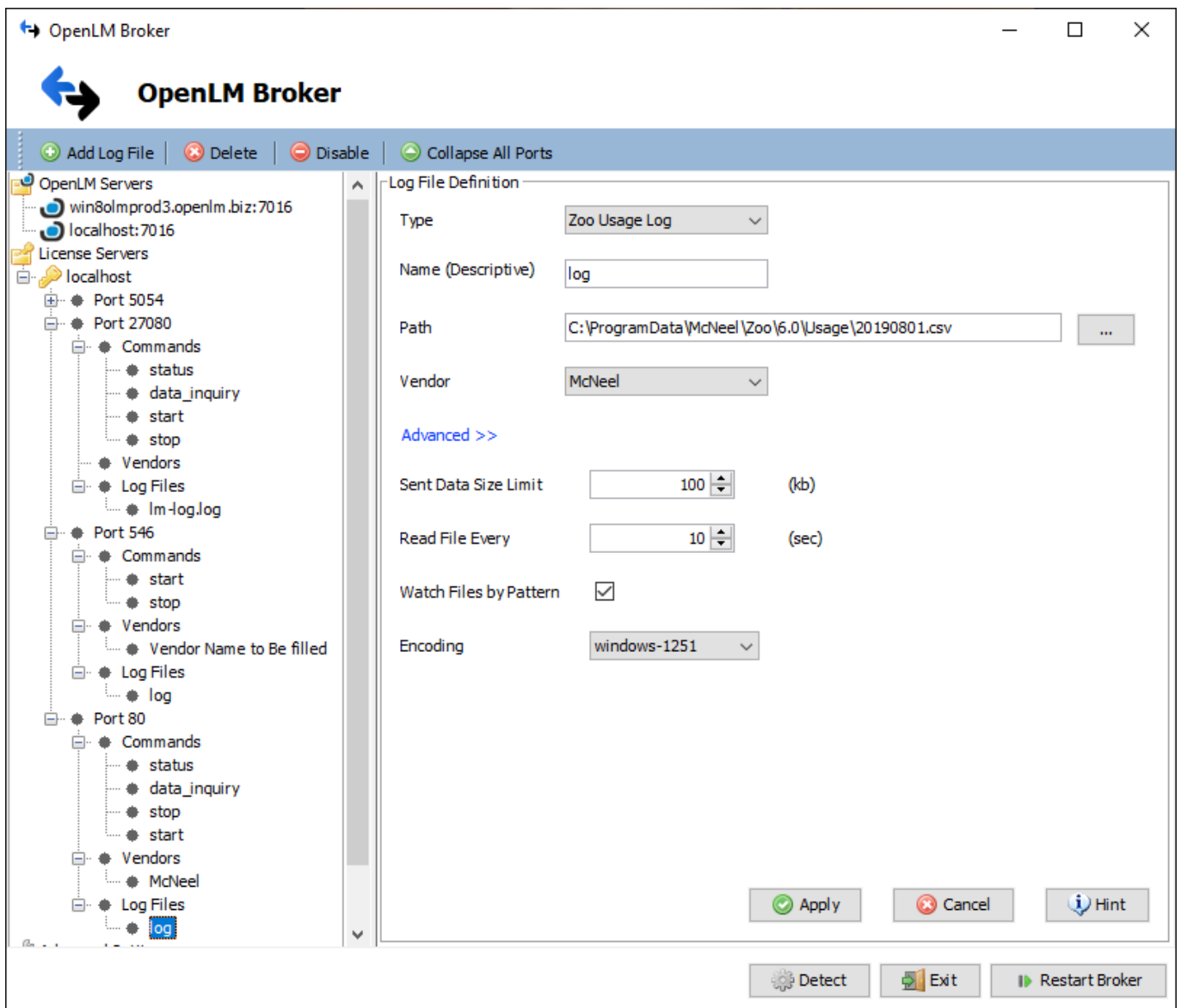


If the Zoo License Manager service (e.g. "McNeelZoo6") is started, Broker will detect and configure all the required settings automatically.

Manual OpenLM Broker configuration

If auto-detect did not work, you can also add and configure the license manager manually. To do so:

1. Click **Add Port**.
2. Enter the Zoo LM port number (e.g. 80).
3. Select **Zoo** from the "License Manager Type" drop-down menu. Click **Apply**.
4. Select "Vendor Name to Be Filled" under Vendors. Enter **McNeel** in the "Vendor Name". field then click **Apply**.
5. Select the Log Files node and click on **Add Log File**.
6. Select the "log" node that has just been created. Click **[...]** and browse to the path where the CSV Zoo log file is located. (typically "C:\ProgramData\McNeel\Zoo\#.#\Usage" where #.# is the Zoo version number, e.g. "6.0")
7. Click **Advanced** then check the "**Watch Files by Pattern**" box.
8. Click **Apply**.
9. Click **Restart Broker**.
10. Follow the steps in section 4 ("Configuring OpenLM Server"), below.



4. OpenLM Server configuration

Automatic OpenLM Server configuration through EasyAdmin

If you have followed the steps in the section above, OpenLM Broker should now be transmitting data to OpenLM Server. The final step is to approve the configuration in EasyAdmin:

1. Open the EasyAdmin interface either by accessing **http://<OpenLM Server IP>:7019/EasyAdmin2/** in your browser or through **Windows Start → OpenLM → OpenLM EasyAdmin User Interface**
2. In the License Servers window, hover over the red row that contains the details of the newly added Zoo LM server entry and click **Approve**.

The rows in red represent license servers that are sending information via the broker but have not been configured. To add this server to the configured servers list, hover over the line and click 'Approve' or click 'Clear' to remove the entry from the current display. Note that removing an entry from the list will not prevent reappearance following subsequent receipt of data from the broker, so you should also check the broker configuration and change if required.

Stat...	Updated On	Name	Type	Q..	U..	B..	U..	Read License File	
⊕	⚠	80@	Approve Clear	OpenLM Generic	N/A	0	0	0.00	✓
⊕	✓	Up-to-date	Local AppManager	OpenLM App M...	Un...	0	0	0.00	

Total number of servers: 1

At this point, the Zoo License Manager has been automatically added to OpenLM Server and configuration is complete.

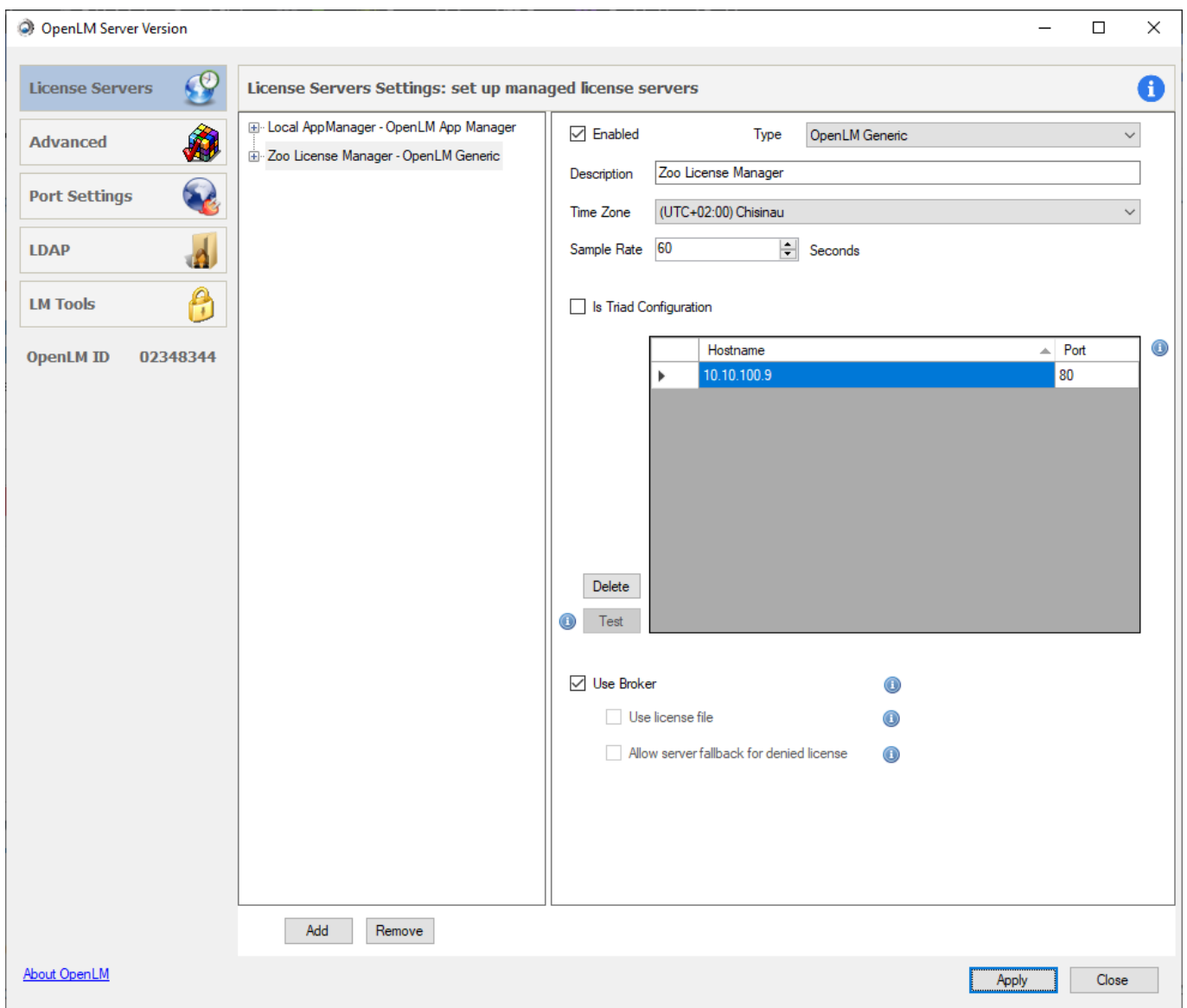
Manual OpenLM Server configuration

If automatic configuration has failed, you can manually configure OpenLM Server to connect to the OpenLM Broker installation located on the Zoo License Manager machine.

The hostname and port settings must exactly match those that have been configured for OpenLM Broker above.

1. Select the **License Servers** tab.
2. Click **Add**.
3. From the **Type** drop-down menu, select **OpenLM Generic**.

4. Insert a description in the Description text box (e.g. "Zoo License Manager")
5. Set the **Time Zone** to where the License Server physically resides.
6. Enter the **Hostname** and **Port** number of the machine where the Zoo License Manager is installed. The Zoo LM default port is **80**.
7. **Is Triad Configuration** box: unchecked.
8. **Use Broker** box: checked.
9. Click **Apply** and close the OpenLM Server configuration tool.



OpenLM Server is now configured to monitor the incoming data from OpenLM Broker.

5. How to verify your Zoo License Manager configuration

To check if the Zoo License Server is being monitored correctly:

1. Open the EasyAdmin web application (access **http://<OpenLM Server hostname>/EasyAdmin2/index.html** in your browser)
2. Click **EasyAdmin Start → Widgets → License Servers**. Verify that the configured license manager(s) appears in the server list. A green circle node indicates an active connection to the license server.

	Stat...	Updated On	Name	Type	Q..	U..	B..	U..	Read License File
+	✓	Up-to-date	Local AppManager	OpenLM App M...	Un...	0	0	0.00	
+	✓	Up-to-date	Zoo LM	OpenLM Generic	1	0	0	0.00	✓

Total number of servers: 2

Please note that sometimes it may take up to 3 minutes for the status indicator to change if this is a newly added connection.