

A. Installing OpenLM Broker with the Installation Wizard

1. Double-click the installer file to initiate installation. A “Preparing to install” screen (see **Figure 1**) will appear briefly before the installation Welcome screen (see **Figure 2**).

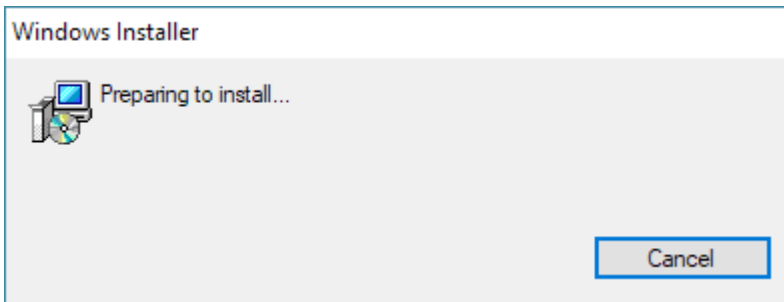


Figure 1: Installation preparation screen.

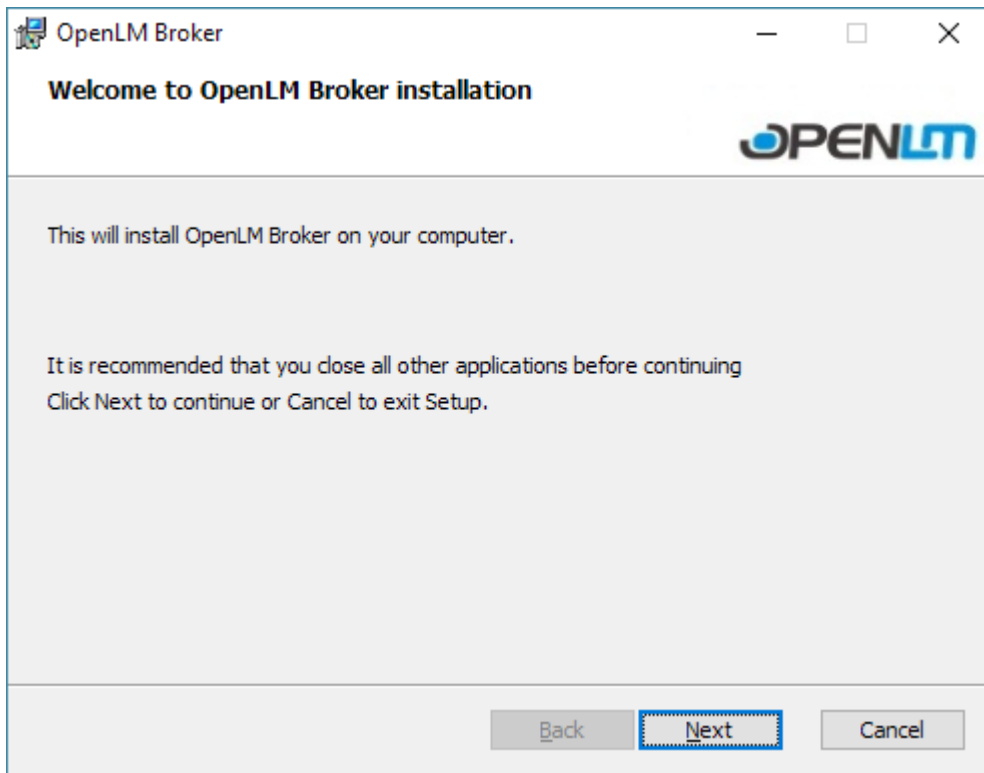


Figure 2: Installation welcome screen.

2. Click [**Next**] to continue with installation. The License Agreement screen will appear

(see **Figure 3**).

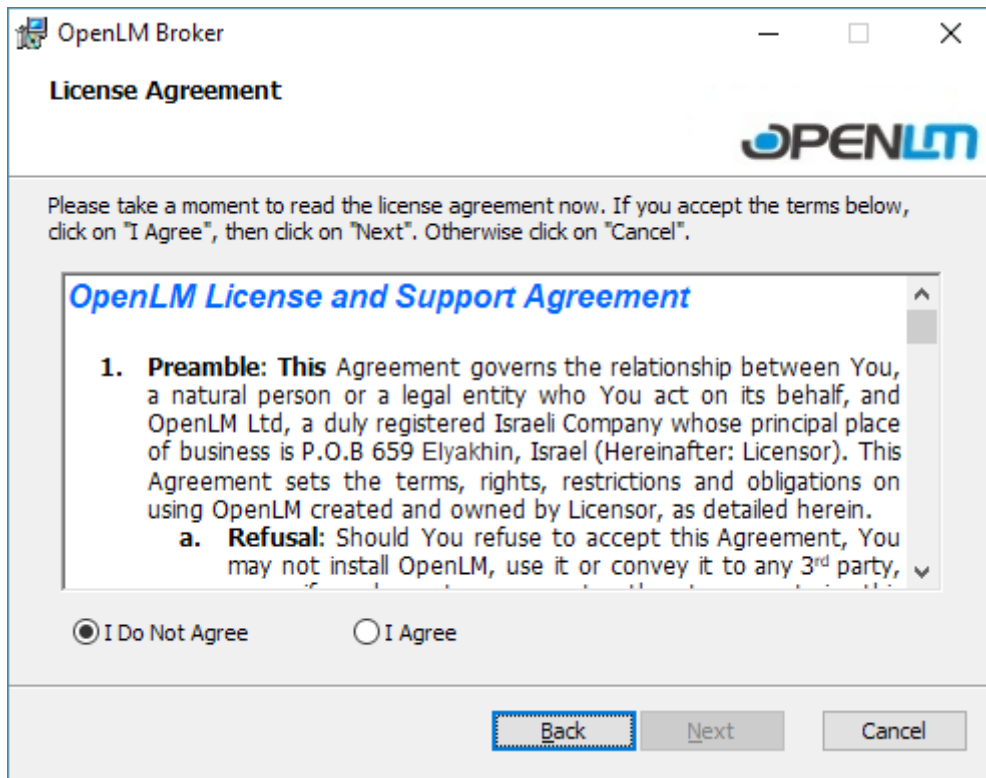


Figure 3: License agreement screen.

3. Read OpenLM License and Support Agreement. If you agree to the terms and want to continue with installation, click "I Agree" radio button (see **Figure 4**). Clicking radio button will enable **[Next]** button. Clicking **[Cancel]** will exit the installer without any changes.



Figure 4: License agreement with "I Agree" checked.

4. Click **[Next]** button. Select Installation Folder screen will appear with default installation path (see **Figure 5**).

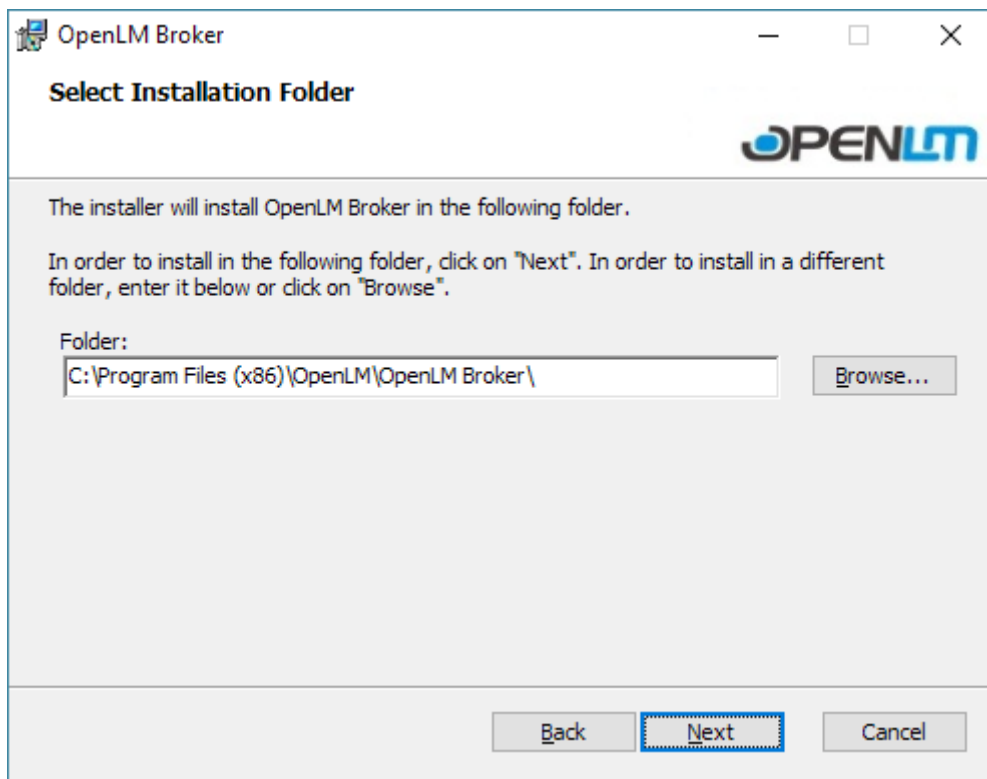


Figure 5: Select

Installation Folder screen.

5. *[Optional]* Click **[Browse]** button to select a different installation path. The default path is recommended.
6. Click**[Next]** button. An installation confirmation screen will appear (see **Figure 6**).

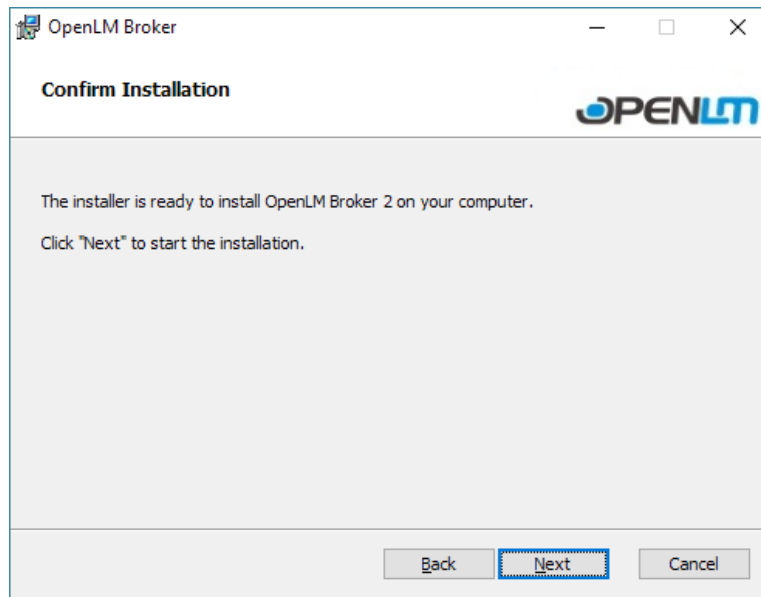


Figure 6: Installation confirmation screen.

7. Click the **[Next]** button to continue with the installation. An installation progress screen will appear (see **Figure 7**). The installation will continue until completion. The Success screen (see **Figure 8**) will appear at the end of a successful installation.

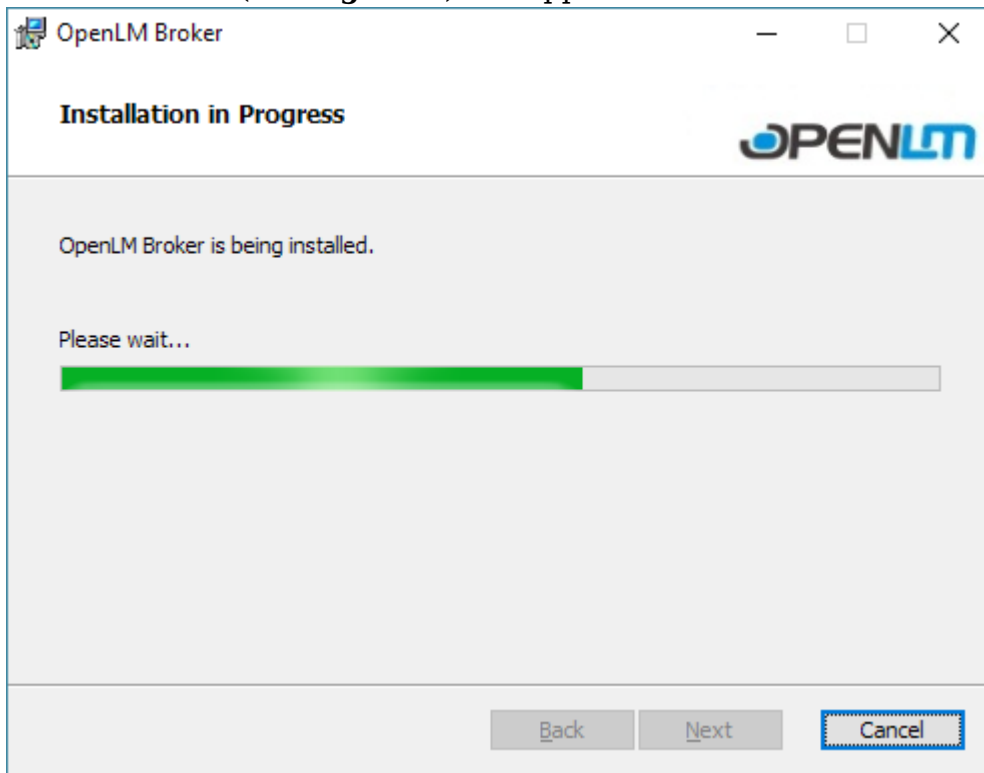
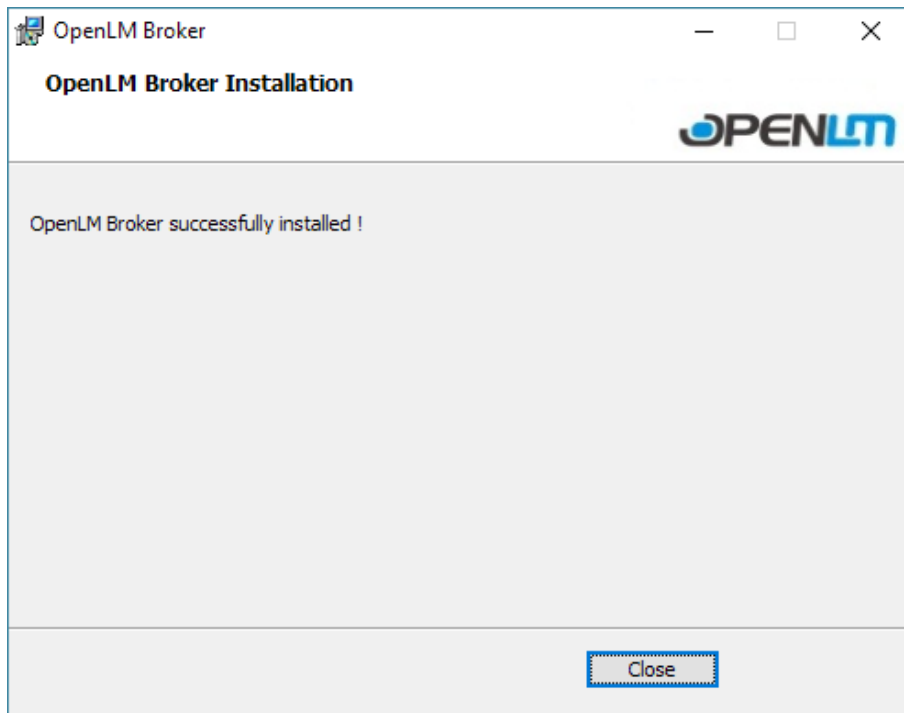


Figure 7: Installation progress screen.**Figure 8: Notification of successful installation.**

8. Click **[Close]** button to exit the installer.

At this point OpenLM Broker installation is complete. Detailed explanation of configuration is presented in “Configuring OpenLM Broker” section of this document.

B. OpenLM Broker Silent Installation

System administrators who need to deploy multiple installations may find it easier and more efficient to install or update silently, using their domain controller. This installation method allows users to install OpenLM Broker with predefined options and no on-screen ‘wizard’ assistance.

1. Open a command prompt with administrative privileges (see **Figure 9**). The command prompt can be run in several ways:
 - Type ‘cmd’ in the taskbar search field and press **[RETURN/ENTER]** on keyboard. Right-click “Command Prompt” in the results list and choose “Run as administrator” from popup menu.

- Launch EXE directly by right-clicking (e.g., from C:\Windows\System32\cmd.exe) and choosing “Run as administrator” from popup window.
- Open Windows PowerShell from the Start menu. Right-click on Start then choose Windows PowerShell (Admin). This will open Windows PowerShell in administration mode.

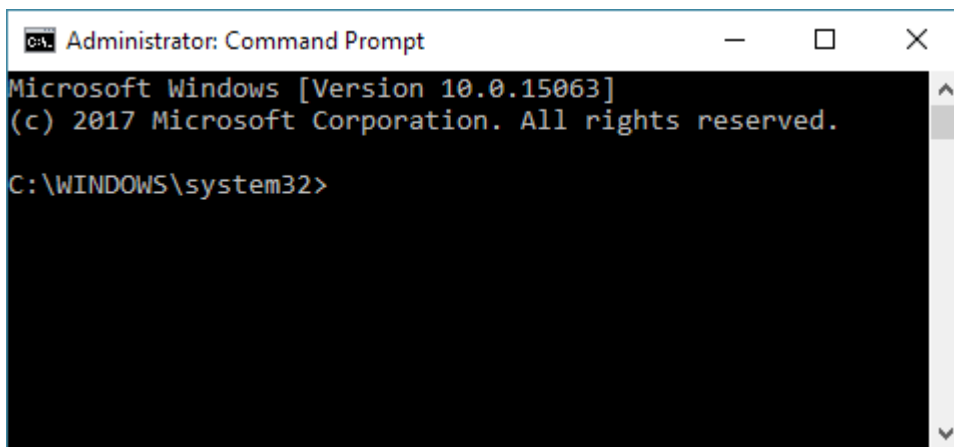


Figure 9: Command Prompt screen opened with Administrator role.

2. Type in necessary parameters for installation in command prompt using the following format:

```
msiexec /i "<msi installation file path>" /quiet /norestart  
<parameters>
```

MSI file path is the location of the MSI file downloaded for installation. To view a complete list of options for installation, run the following in command prompt:

```
msiexec /i "<msi installation file path>" /help
```

A simple installation might look like the following (includes a log [/L*V (filename)] of the installation; the 'TRANSFORMS' parameter refers to the number of instance [:I##]):

```
msiexec /i "<path>\OpenLM.Broker.Installer-#.#.##.#.msi /qn  
TRANSFORMS=":I01" MSINewInstance="1" /L*V log.txt
```

3. After entering the installation command, press [Enter/Return] on the keyboard to launch the installation. Command prompt will advance to a new line and installation will be completed in the background.

4. Close the command prompt by clicking the [x] in the upper right part of the window.

As this is a silent installation, there is no additional user input. Silent installer uses all default values during installation. OpenLM Broker will be installed in the default installation folder (e.g., C:\Program Files (x86)\OpenLM\OpenLM Broker). If such folder does not exist, it will be created as part of the installation process. Older OpenLM Broker versions will be upgraded if an earlier version found in the installation folder.

Installation of Two or More OpenLM Broker Instances

It may be beneficial to have more than one version of OpenLM Broker installed for a variety of different reasons. This deployment requires the following:

- Each new version of OpenLM Broker should be configured to run on its own OpenLM Server.
- Each new installation of OpenLM Broker must be installed on the same license server machine as the production installation of OpenLM Broker.

The following series of steps assumes that one instance of Broker is already installed on the targeted license server. Use the following steps to install additional instances of OpenLM Broker.

1. Double-click the installer file to initiate installation. The wizard welcome screen will appear. Previous installation(s) will be detected and the default will be set according to what installations are located. If an older instance is detected the default will be set to Upgrade Instance(s) (see **Figure 10**). If all existing instances are current, the screen will check by default Install New Instance (see **Figure 11**). Correct option for parallel installation is Install New Instance.

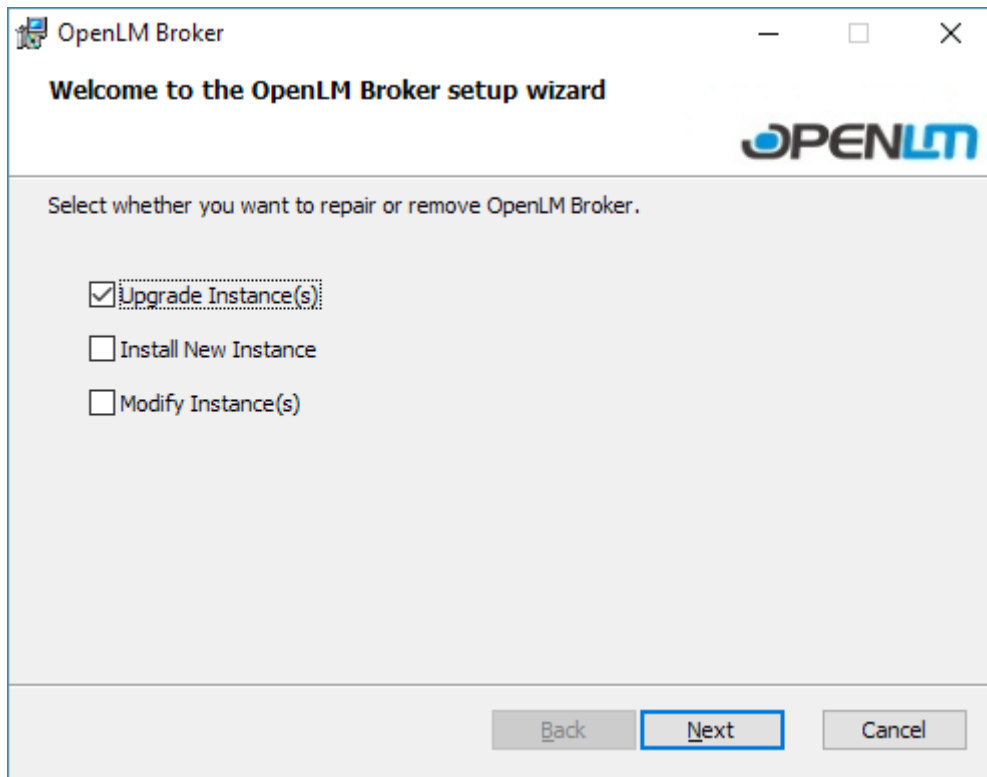


Figure 10: Wizard screen with Upgrade Instances checked.

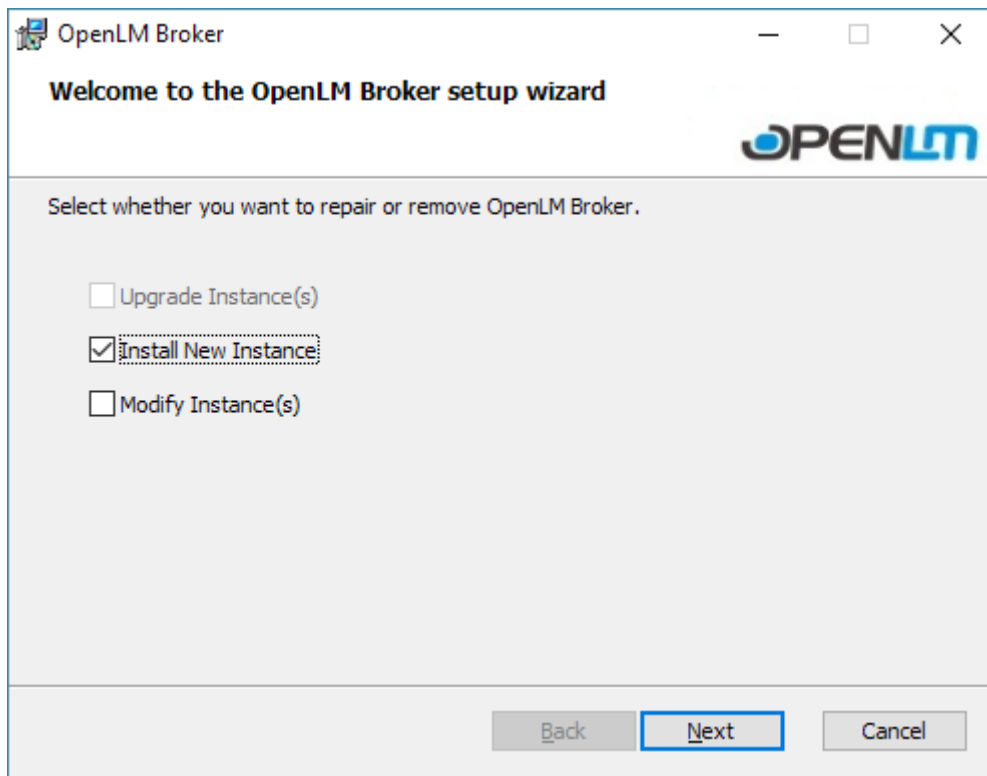


Figure 11: OpenLM Broker wizard setup screen.

2. Click **[Next]** to continue with installation. License Agreement screen will appear (see **Figure 12**).



Figure 12: License agreement screen.

3. Click **"I Agree"** radio button (see **Figure 13**). Clicking radio button will enable **[Next]** button.

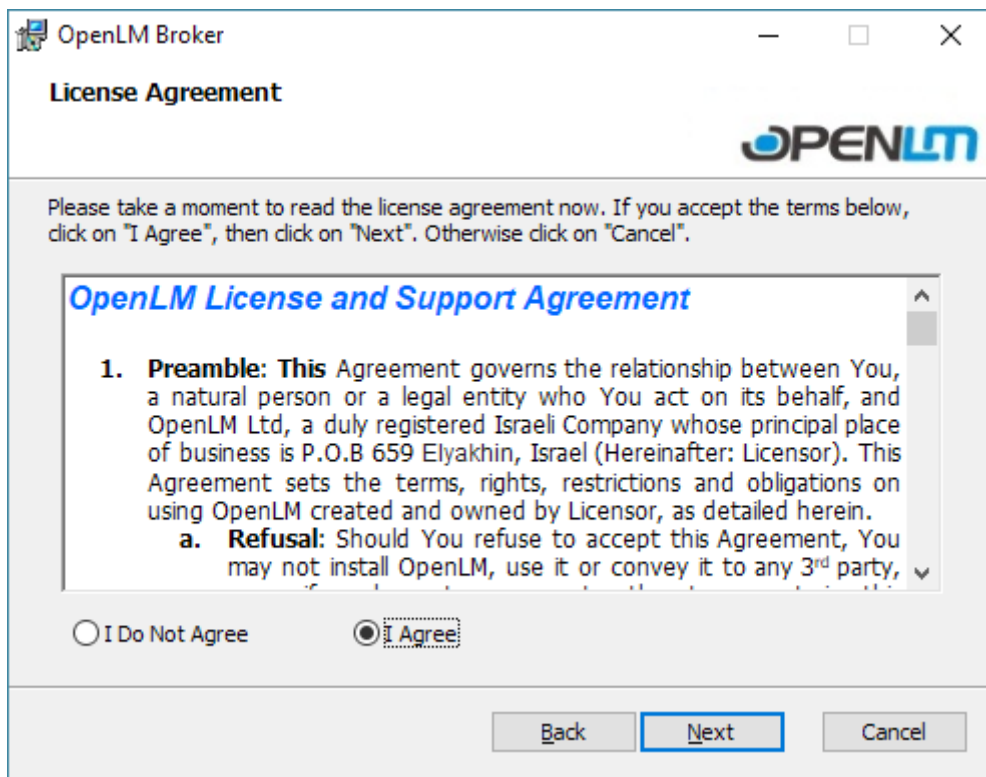


Figure 13: License agreement with “I Agree” checked.

4. Click **[Next]** button. **Select Installation Folder** screen will appear with default installation path and automatically will add a digit to Broker folder name (see **Figure 14**).

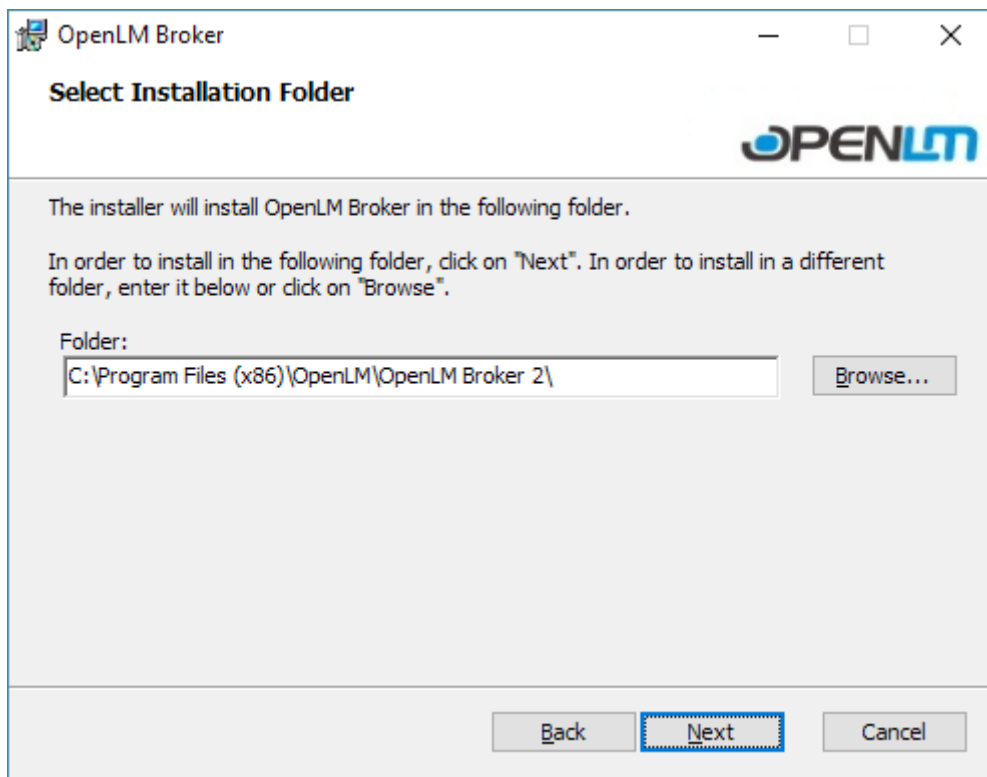


Figure 14: Select Installation Folder screen with installation path.

5. *[Optional]* Click **[Browse]** button to select a different installation path. The default path is recommended.
6. Click **[Next]** button. Confirm Installation screen will appear (see **Figure 15**).

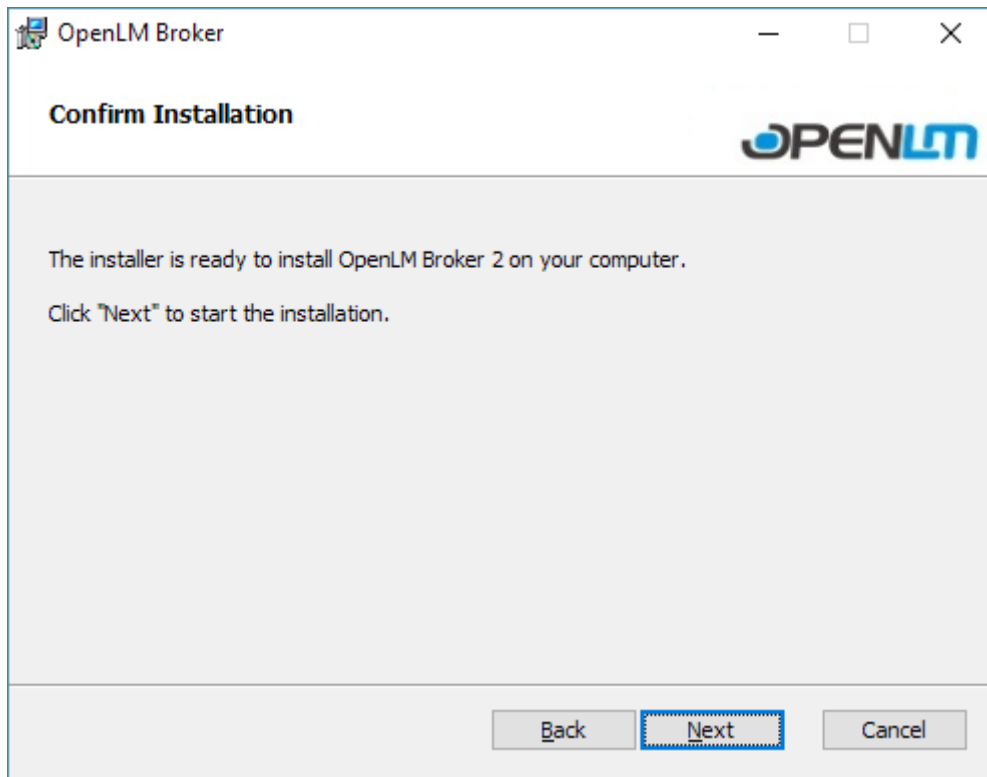


Figure 15: Confirm Installation screen.

7. Click **[Next]** button to continue with installation. An installation progress screen will appear (see **Figure 16**). Installation will continue until completion. Success screen (see **Figure 17**) will appear at the end of a successful installation.

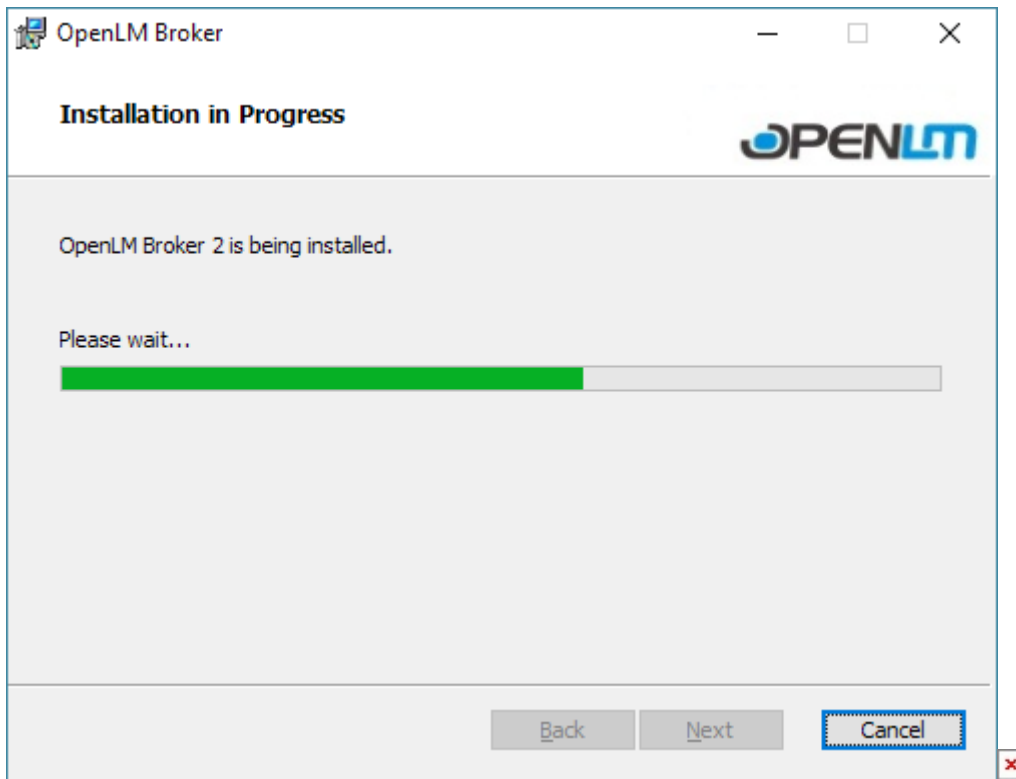


Figure 16: Installation progress screen.

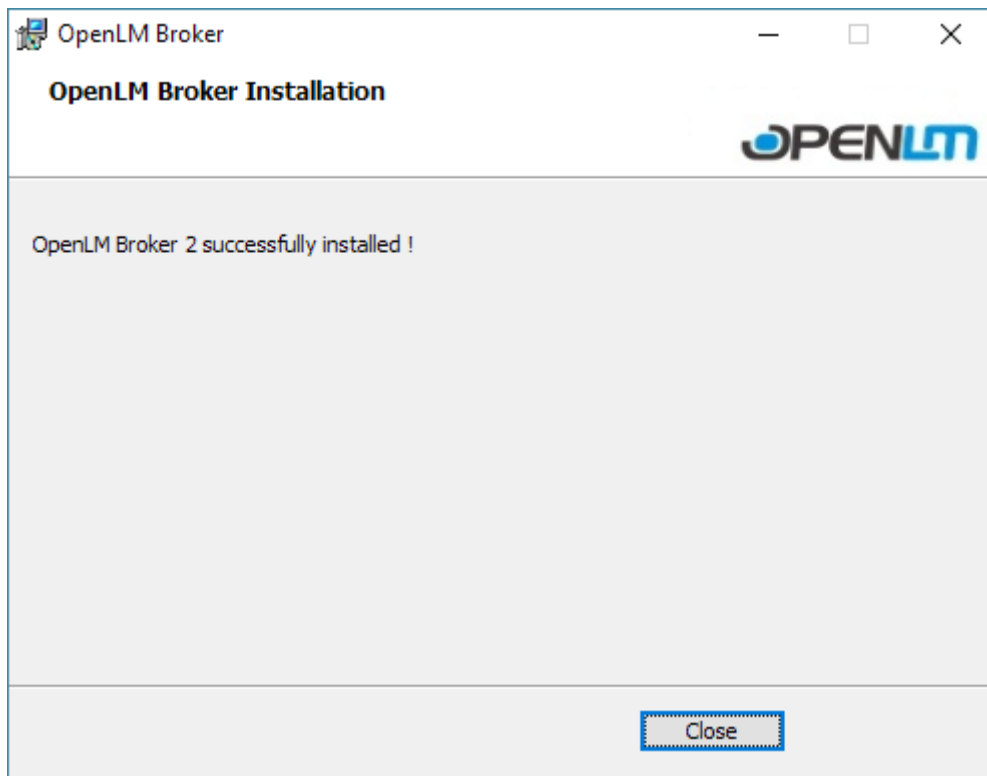


Figure 17: Installation success screen.

8. Click **[Close]** button to exit the installer.
9. Repeat **Step #1** to **Step #8** to install additional instances of Broker.

The parallel installation is complete. For configuration and use see dedicated configuration and user documentation.

Uninstalling OpenLM Broker

Uninstall can be initiated through Windows Control panel (Option A), by launching OpenLM Broker Setup Wizard and choosing option to modify OpenLM Broker (Option B), or by doing a silent uninstall via Windows Shell.

Option A: Uninstall Using Windows Control Panel

1. Open Windows Control Panel. This is located in C:\Windows\System32\control.exe or by typing "Control Panel" in the Windows search bar and selecting "Control Panel" from the results.
2. Locate and click "**Uninstall a Program**" option under Programs highlighted in **Figure 18**. Programs and Features screen will appear.

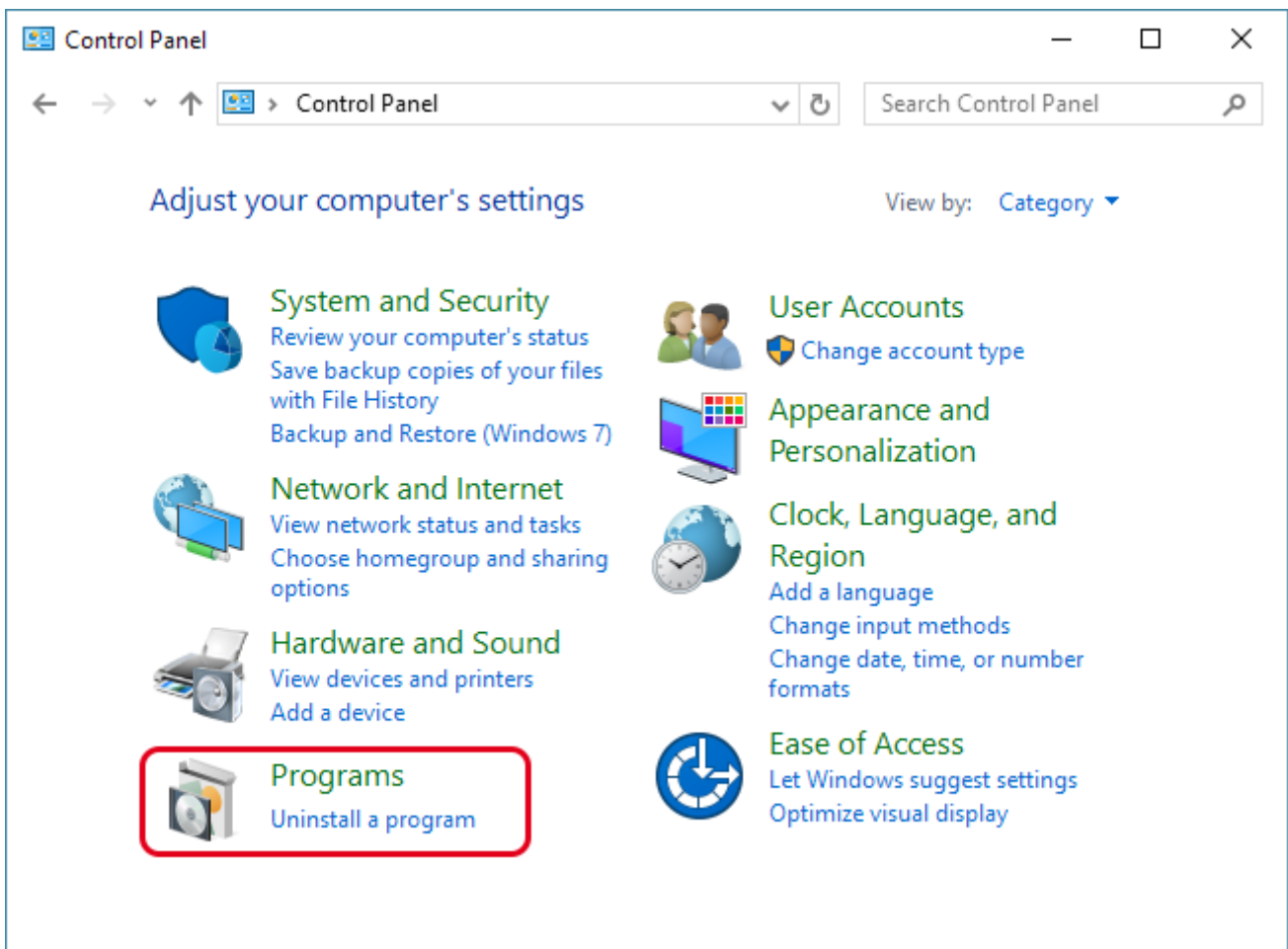


Figure 18: Windows Control Panel with Programs link highlighted.

3. Locate and click on OpenLM Broker in the list of names (click on Name to sort the list alphabetically). Action options for the program will appear at the top of the list (see **Figure 19**).

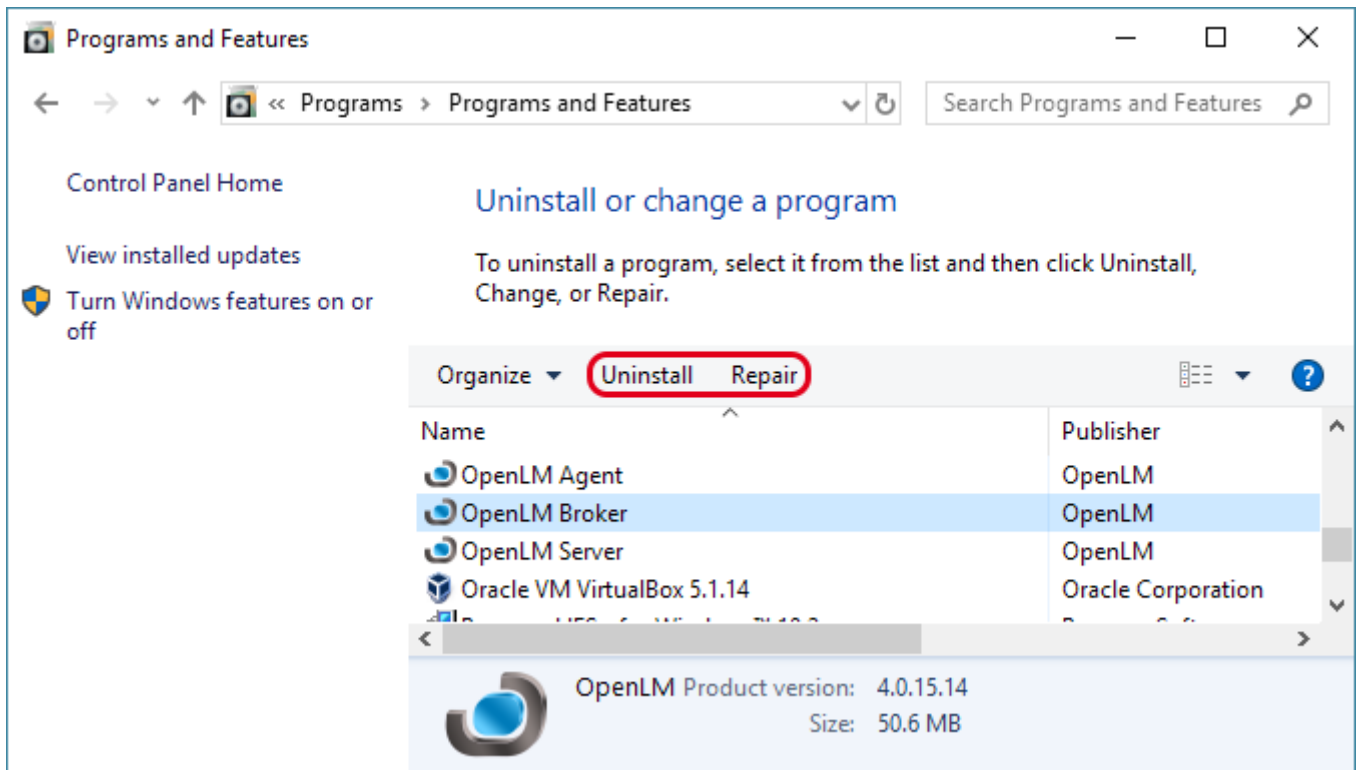


Figure 19: Programs and Features screen with the options highlighted.

4. Click on **Uninstall**. This will open a confirmation screen (see **Figure 20**).

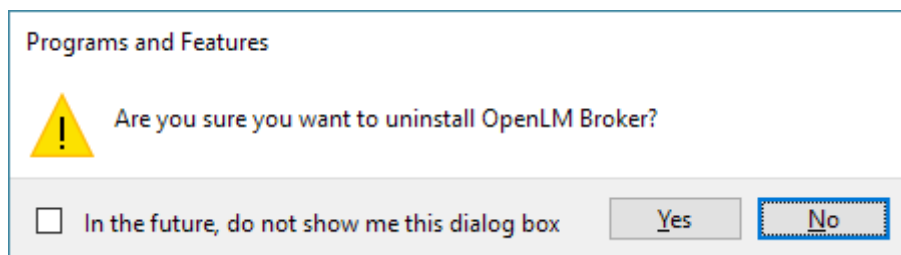


Figure 20: Uninstall confirmation screen.

5. Click **[Yes]** to confirm uninstall. A progress screen will appear (see **Figure 21**). The progress screen will close when the process is complete.

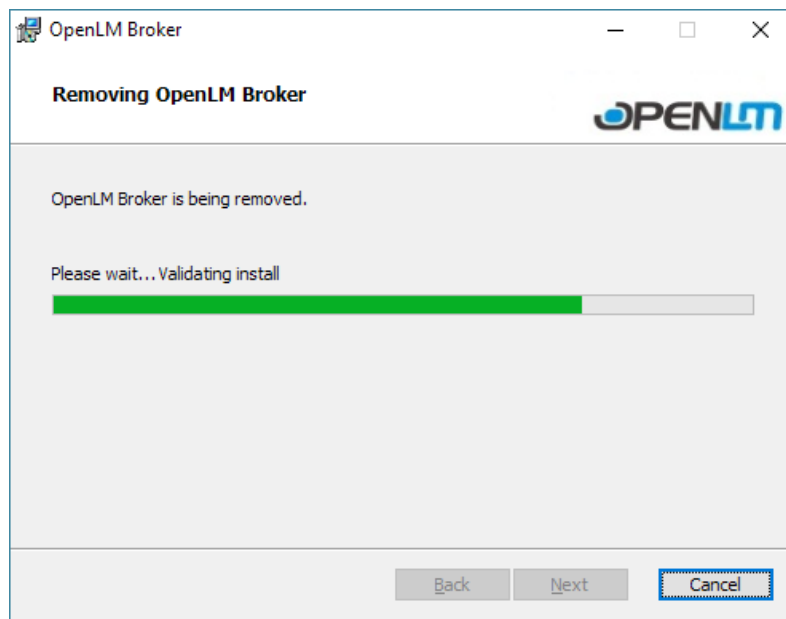


Figure 21: OpenLM Agent uninstall progress screen.

6. Close Programs and Features screen by clicking **[x]** in the upper right part of the window to close Control Panel.

At this point the uninstall via the Control Panel Programs and Features function is complete. Uninstalling will leave configuration files for OpenLM Broker intact and they must be deleted manually. They are left so that OpenLM Broker can be reinstalled without losing previous configurations. They can be found by default in C:\Program Files (x86)\OpenLM\OpenLM Broker (#).

Option B: Uninstall Using the OpenLM Installer Package

1. Locate installer file and double-click it. OpenLM Broker Setup Wizard screen will appear (see **Figure 22**). “Install New Instance” is selected by default.

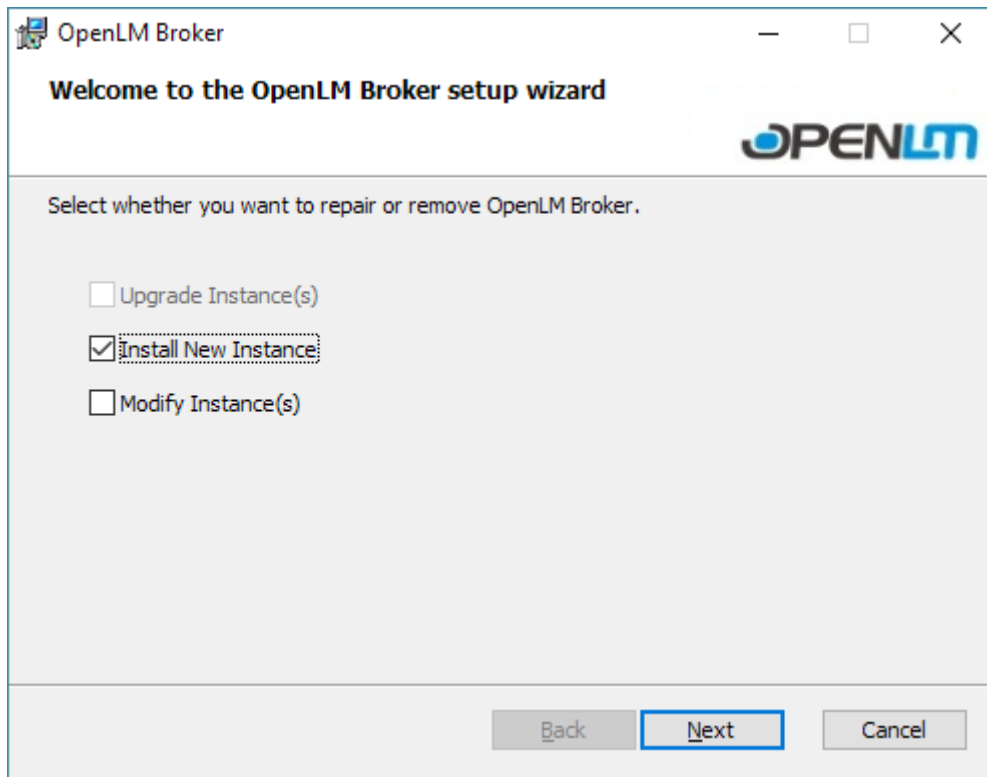


Figure 22: OpenLM Broker Setup Wizard screen.

7. Click **Modify Instance(s)** checkbox to select option for removing the installation (see **Figure 23**).

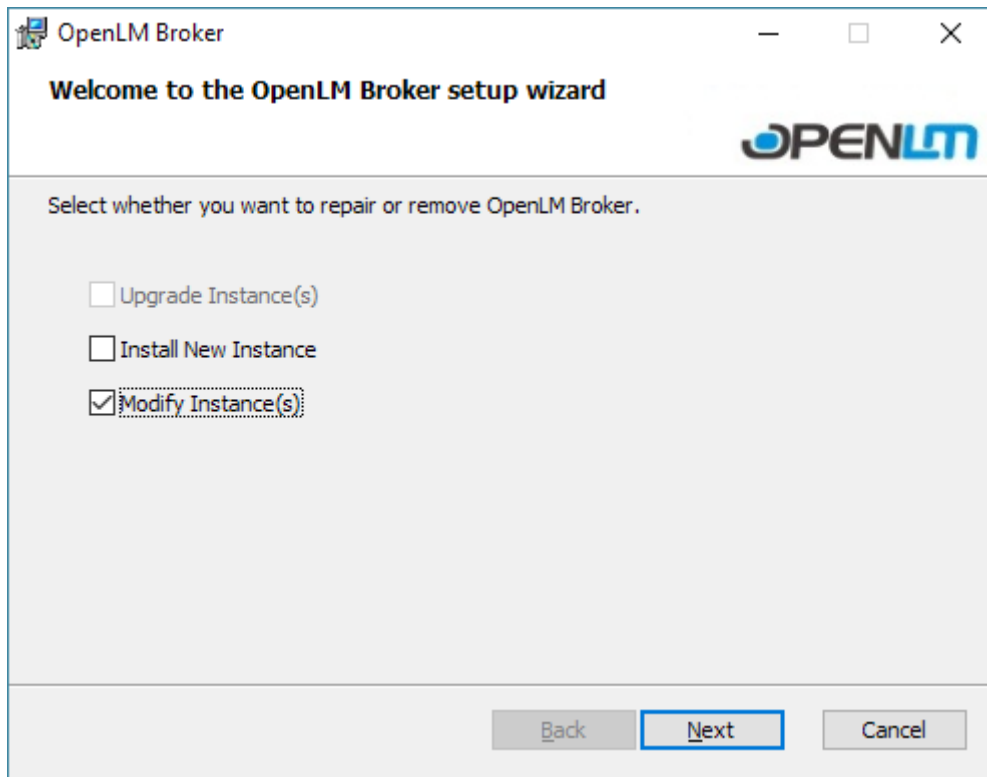


Figure 23: Setup Wizard with “Modify Instance(s)” selected.

8. Click **[Next]** button to advance to the Select Instance screen (see Figure 24).

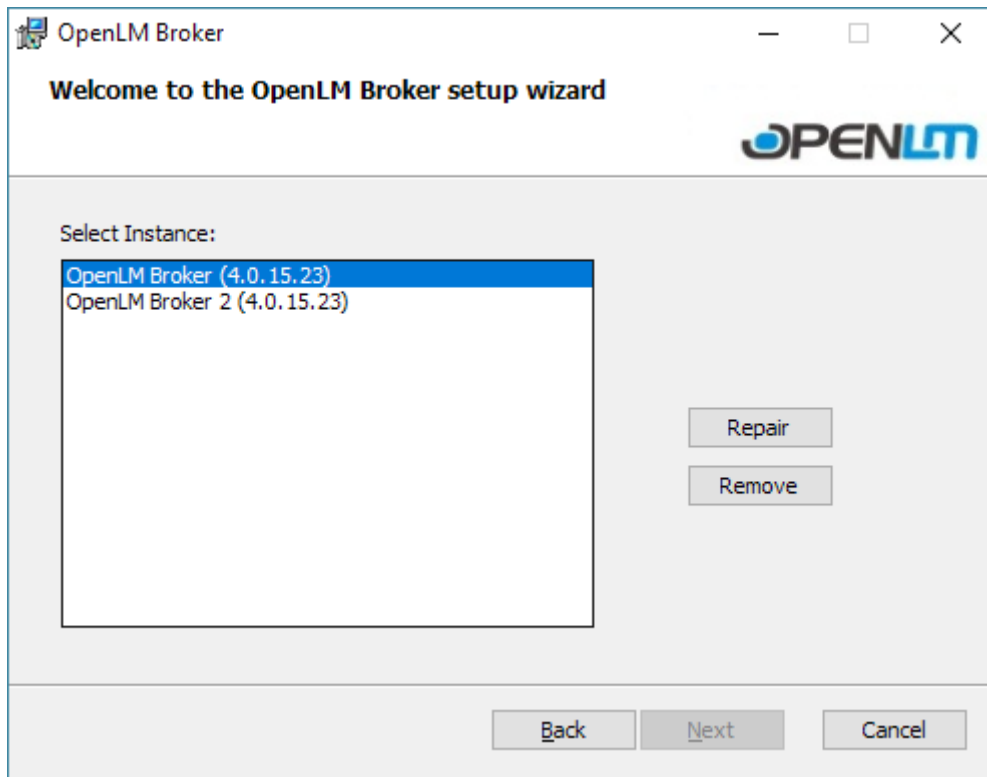


Figure 24: Select Instance screen.

9. Choose the instance by clicking on it in the list (if there is only one it will be highlighted already).
10. Click **[Remove]** button.
11. A progress screen will appear (see **Figure 25**).

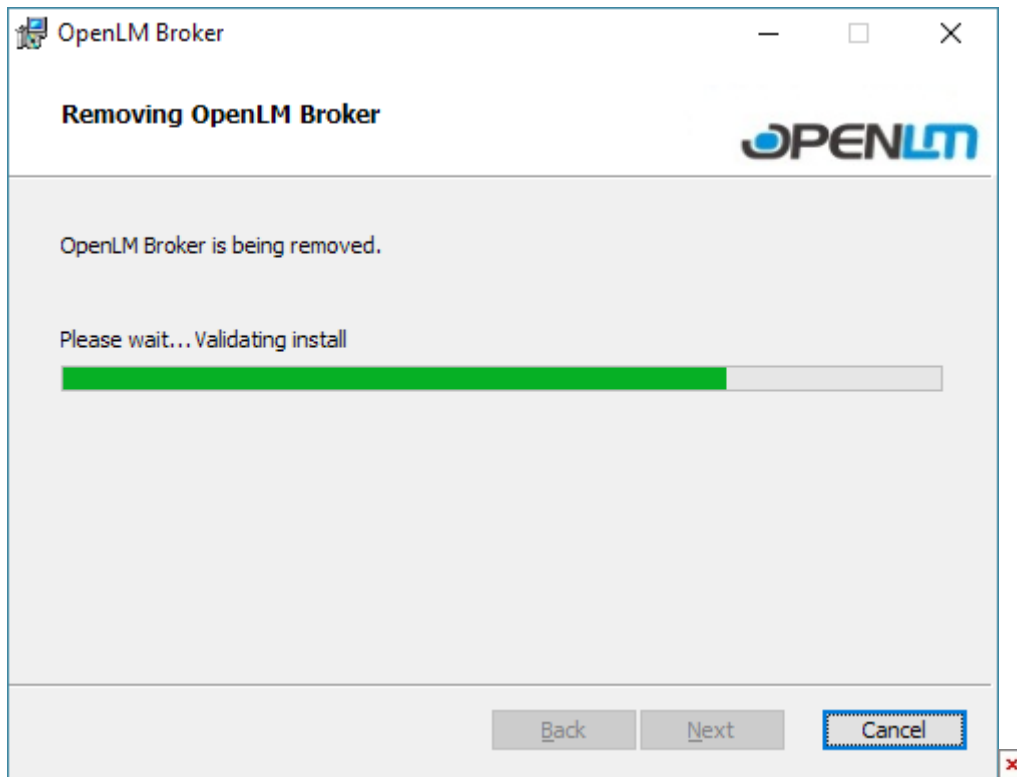


Figure 25: Removing OpenLM Agent progress screen.

12. If any processes are still running that use portions of the OpenLM Broker, an error screen will appear with information on specific process(es) involved. These processes can be stopped using Windows Services (e.g., execute `C:\WINDOWS\system32\services.msc` or type "Services" in the Windows search on the taskbar and choose Services App from the result), and removal can be continued by clicking [Try Again] (see Figure 26). When removal is complete, removal success screen will appear (see Figure 27).

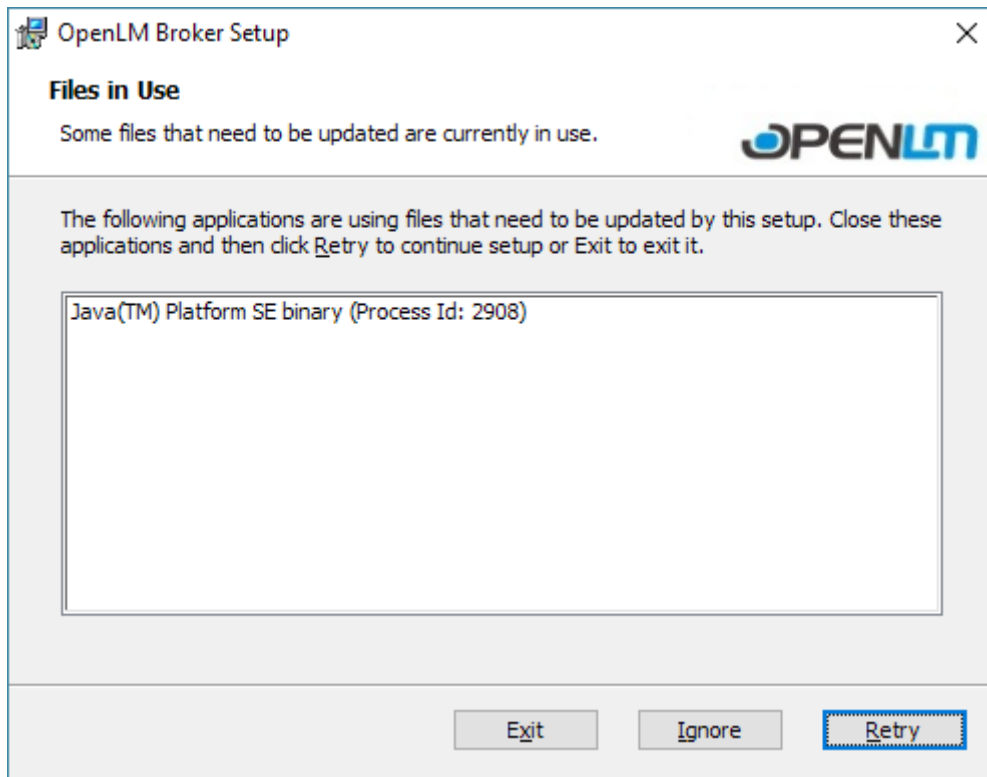


Figure 26: Files in Use alert screen.

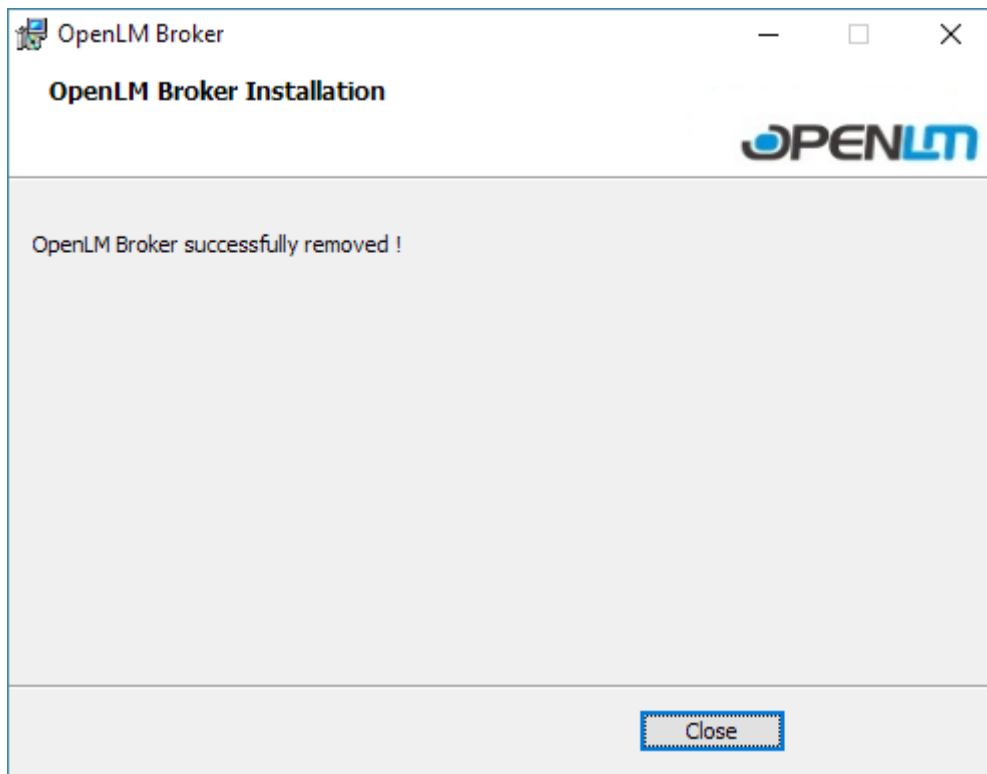


Figure 27: Removal success screen.

13. Click **[Close]** button to exit the Setup Wizard.

At this point the removal process using the OpenLM Broker Installer wizard is complete. Uninstalling will leave configuration files for OpenLM Broker intact and these must be deleted manually. They are left so that OpenLM Broker can be reinstalled without losing previous configurations. They can be found by default in C:\Program Files (x86)\OpenLM\OpenLM Broker (#).

C. OpenLM Broker Silent Installation

System administrators who would like to install silently can do so with the following method.

1. Open a command prompt with administrative privileges (see **Figure 28**). The command prompt must be run as an administrator. Instructions for eliciting the command prompt can be found in section "B. OpenLM Broker Silent Installation" under the OpenLM Broker Installation heading.

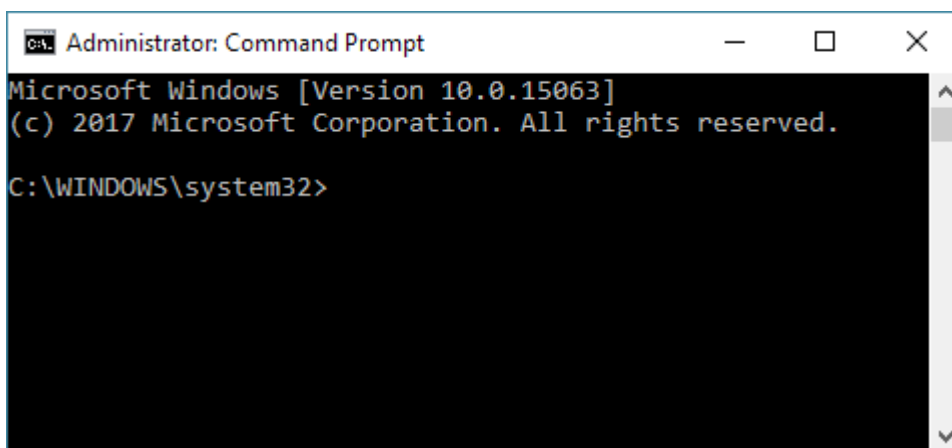


Figure 28: Command Prompt screen opened in the Administrator role.

2. At the command prompt, enter the desired parameters for the uninstall. This will be in the format as follows:

```
msiexec /x "<msi installation file path>" /qn TRANSFORMS=":I##"
```

The MSI file path is the location of the MSI file downloaded for the installation. A simple uninstall might look like the following (includes the 'TRANSFORMS' parameter which

refers to the number of the instance [:I##] to be uninstalled):

```
msiexec /x "<path>\OpenLM.Broker.Installer-#.#.##.#.msi /qn  
TRANSFORMS=":I01"
```

3. After entering the installation command, press **[Enter/Return]** on the keyboard to launch the installation. The command prompt will advance to a new line and the installation will complete in the background.
4. Close the command prompt by clicking the **[x]** in the upper right of the window.

As this is a silent uninstall, there is no additional user input. Uninstalling will leave the configuration files for OpenLM Broker intact and these must be deleted manually. They are left so that the OpenLM Broker can be reinstalled without losing previous configurations. They can be found by default in C:\Program Files (x86)\OpenLM\OpenLM Broker (#).