

OpenLM Software is delivered with LightTPD: a built-in web server that starts as a service. Users are able to continue using the built-in web server or use a standard web server such as Microsoft IIS 7 instead. This guide will explain how to configure OpenLM EasyAdmin to work with Microsoft IIS 7.

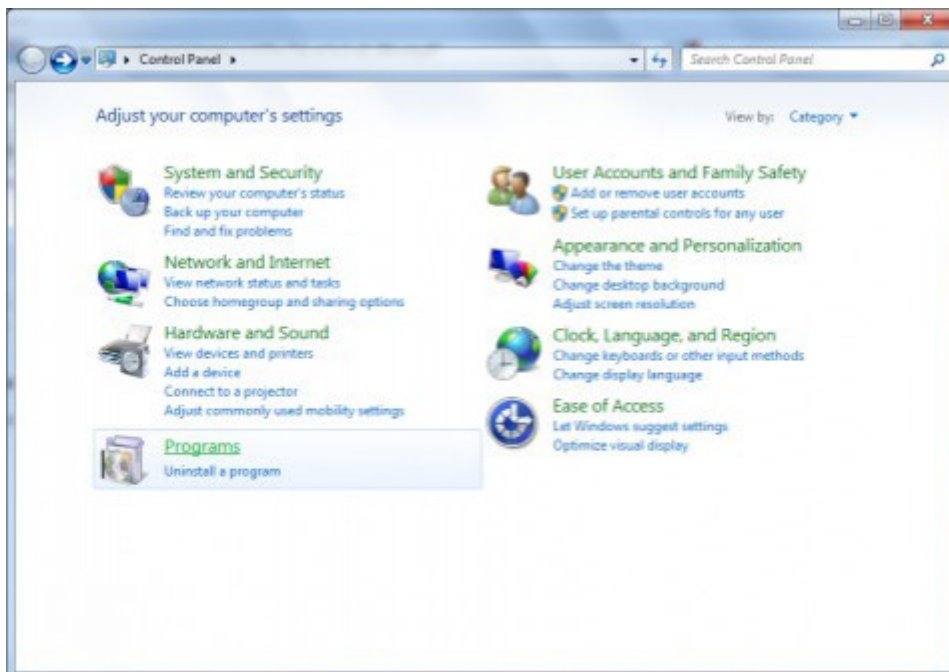
## Configuring OpenLM EasyAdmin to work with Microsoft IIS 7

### 1. Install IIS:

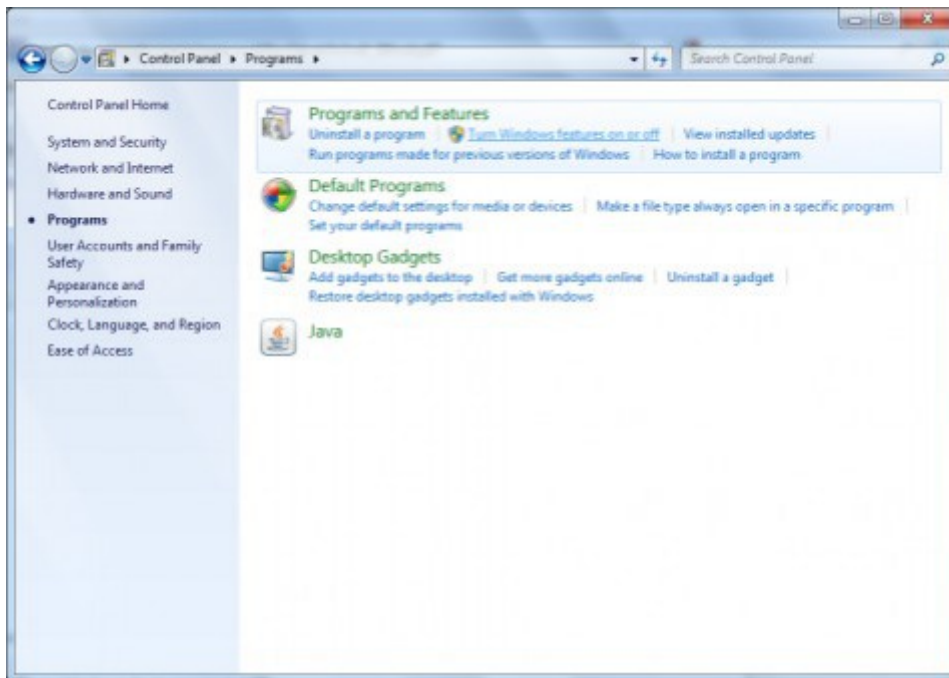
Make sure that IIS is installed. Browse to the localhost URL (<http://localhost/EasyAdmin2/index.html>) and review the IIS page. If it is not installed, follow the instructions to install it.

### 2. Enable CGI in IIS:

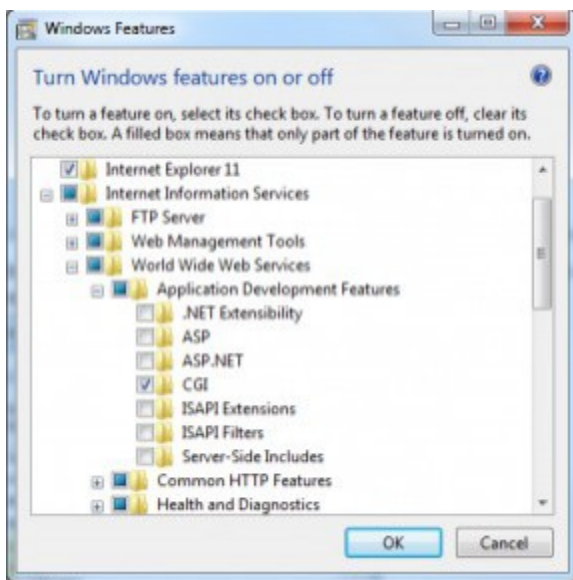
2a. Open the Windows control panel and select Programs.



2b. Select Turn Windows features on or off.

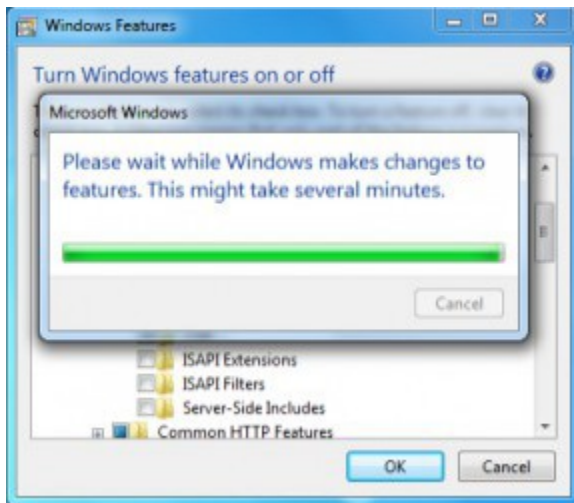


2c. Wait for the window to load (this may take some time). Select “Internet Information Services→ World Wide Web Services → Application Development Features → CGI”.



2d. Select “Internet Information Services→ World Wide Web Services → Web Management Tools” and check the “IIS Management Console” box.

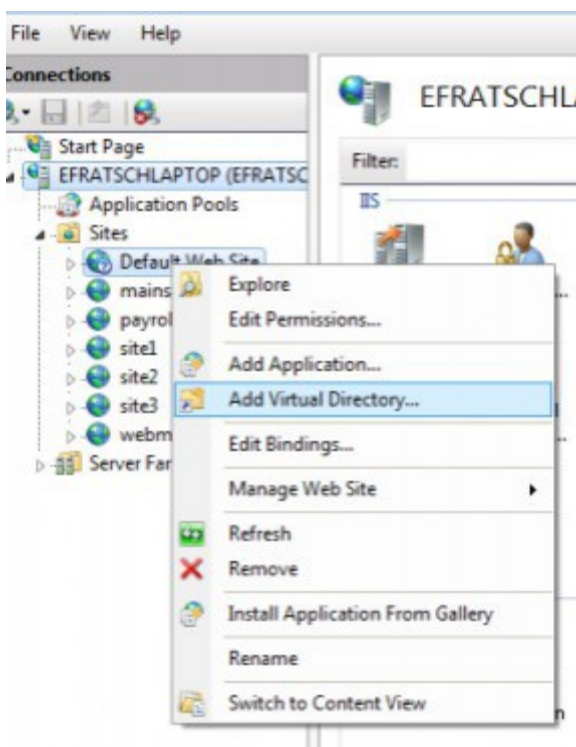
2e. Click OK.



### 3. Create the EasyAdmin site in IIS

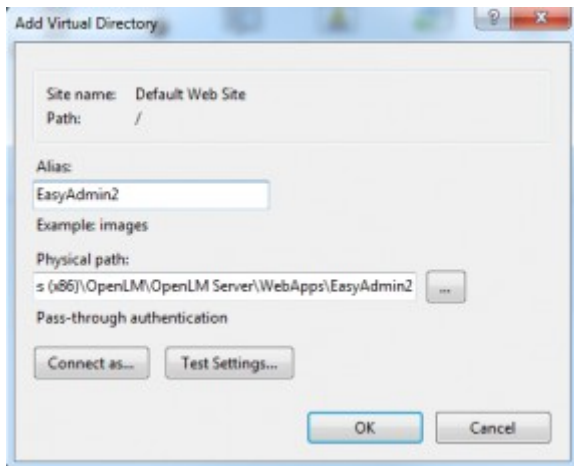
3a. Open Windows "Control Panel" → "System and Security" → "Administrative Tools" → "Internet Information Services (IIS) Manager".

3b. Right-click "Default Web Site" and select "Add Virtual Directory".

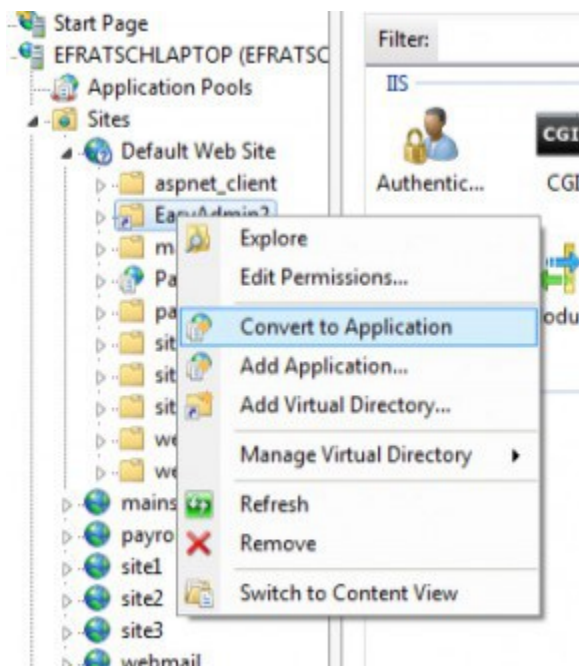


3c. Type in 'EasyAdmin2' in the 'Alias' text box.

3d. Type in the physical path to the EasyAdmin location (typically: "C:\Program Files (x86)\OpenLM\OpenLM Server\WebApps\EasyAdmin2") in the "Physical path" text box.



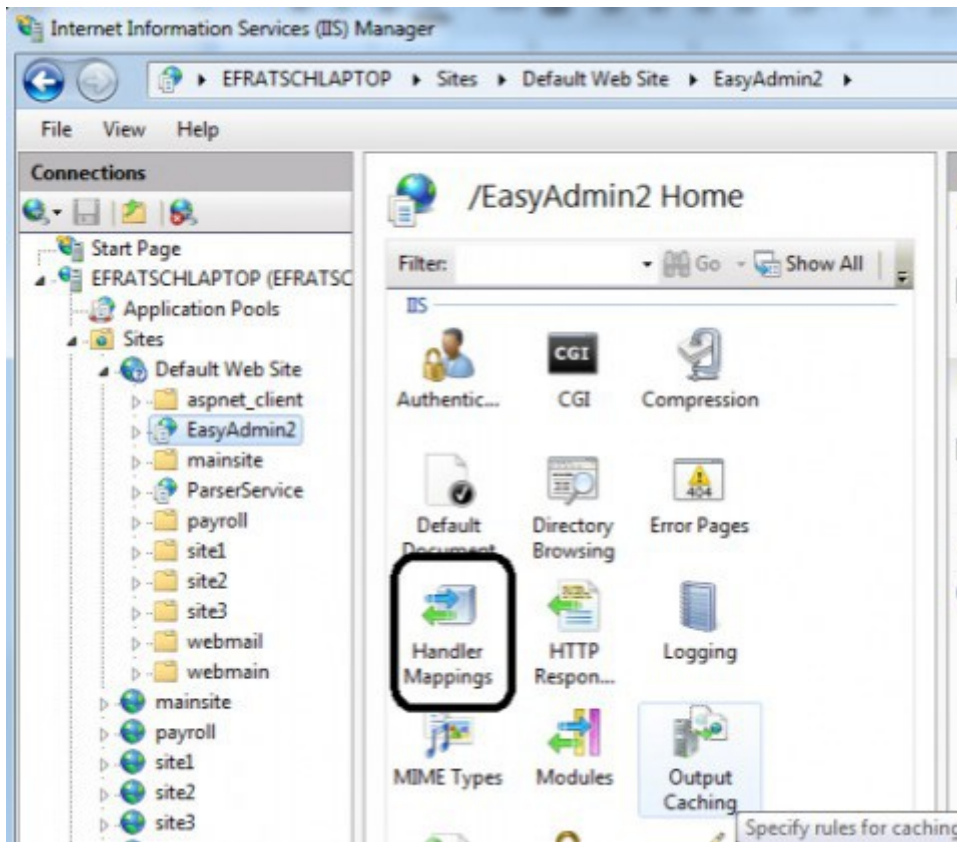
3e. Right-click the EasyAdmin2 site and select Convert to Application.



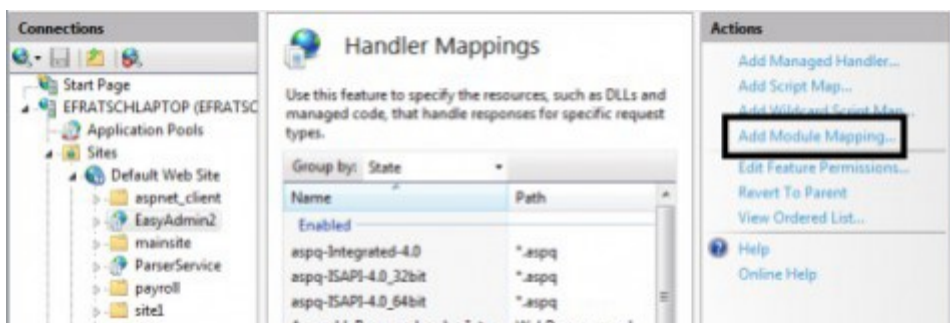
3f. The "Add Application" window opens. Click 'OK'.

## 4. Enable EasyAdmin CGI

4a. From the EasyAdmin2 Home double-click the "Handler Mappings" icon.



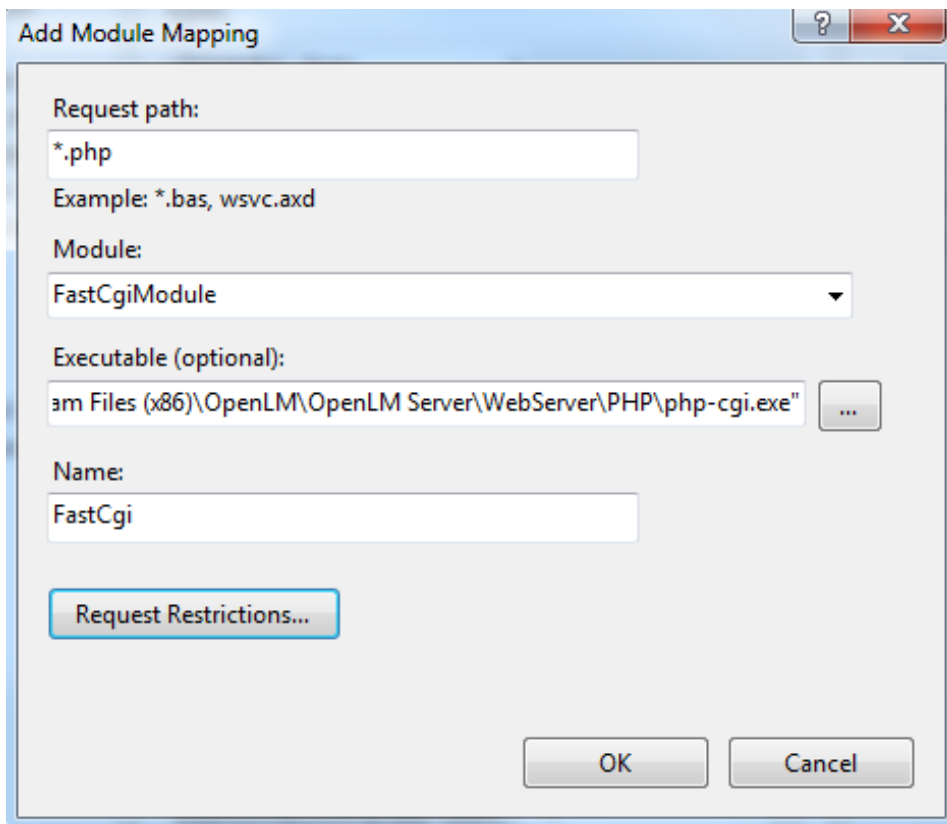
4b. Select Add Module Mapping. The “Add module mapping” dialog window opens.



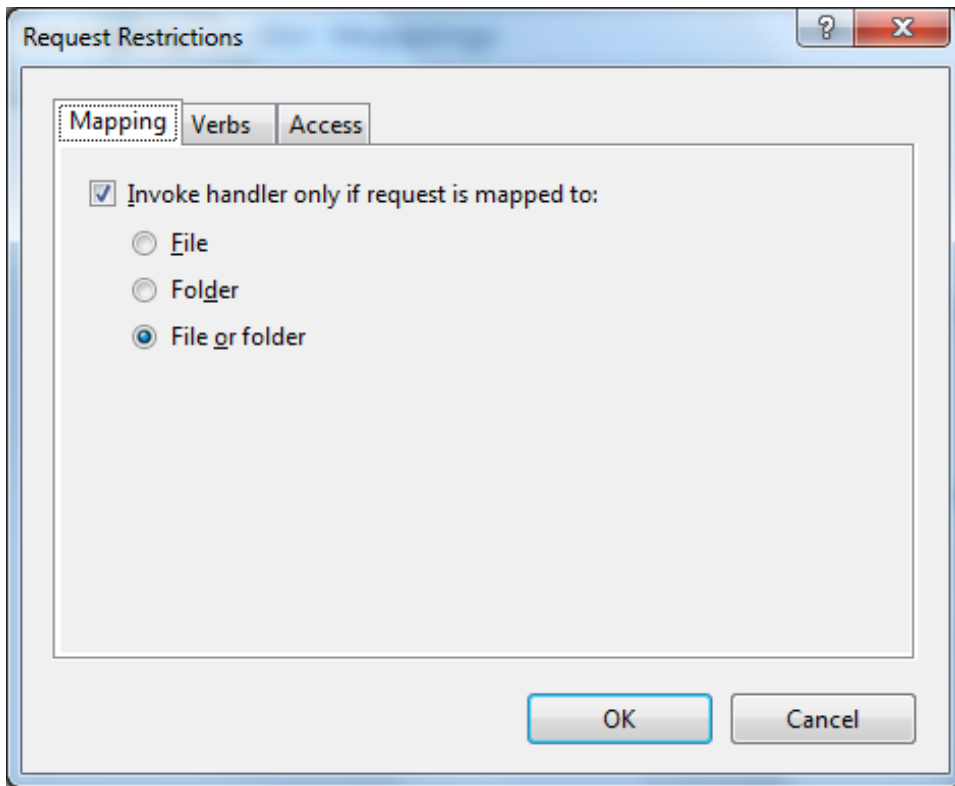
4c. Type the following text in the appropriate text boxes:

- Request Path: \*.php
- Module: select “FastCgiModule”
- Executable: type in the “cgi-bin\proxy.exe” path (with quotation marks). The typical path is

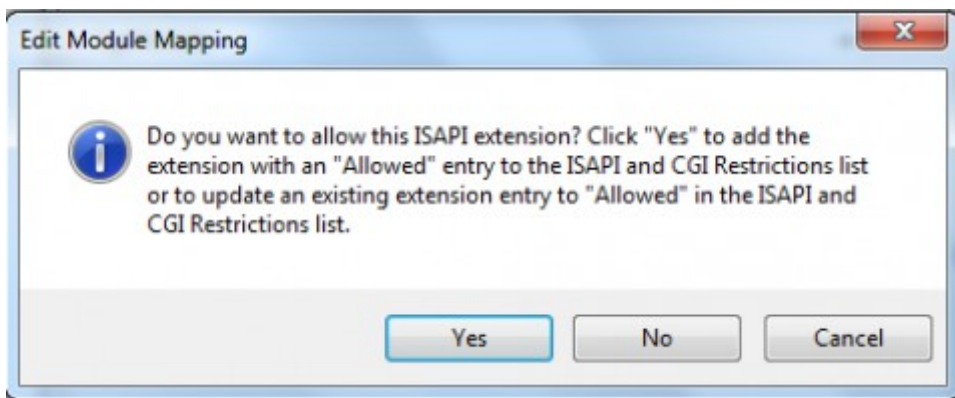
“C:\Program Files (x86)\OpenLM\OpenLM Server\WebServer\PHP\php-cgi.exe”



4d. Click the "Request Restrictions..." button and select "File or Folder".



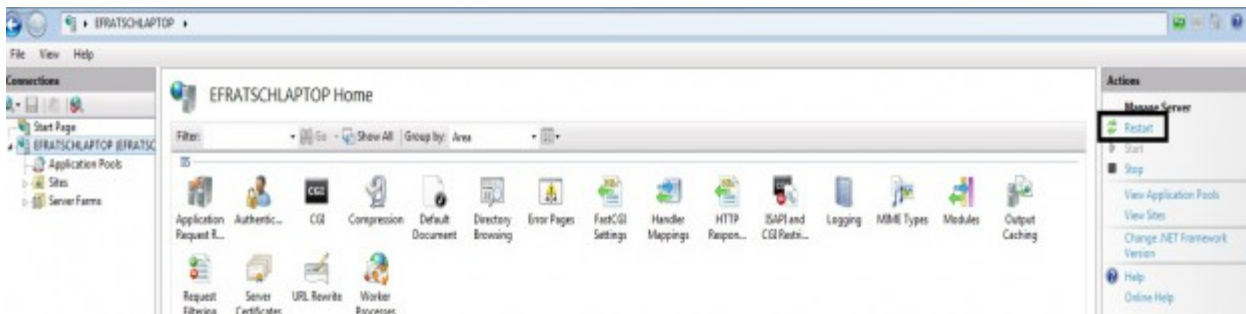
4e. Click 'OK' twice, and answer 'Yes' to this question.



4f. Enable the CGI-exe. Select Edit Feature Permission.

4g. Select Execute and click OK.

4h. The final step before completion is to restart the computer.



## 5. Delete Old Log Files, and set permissions:

5a. Delete the old proxy log files, located at:

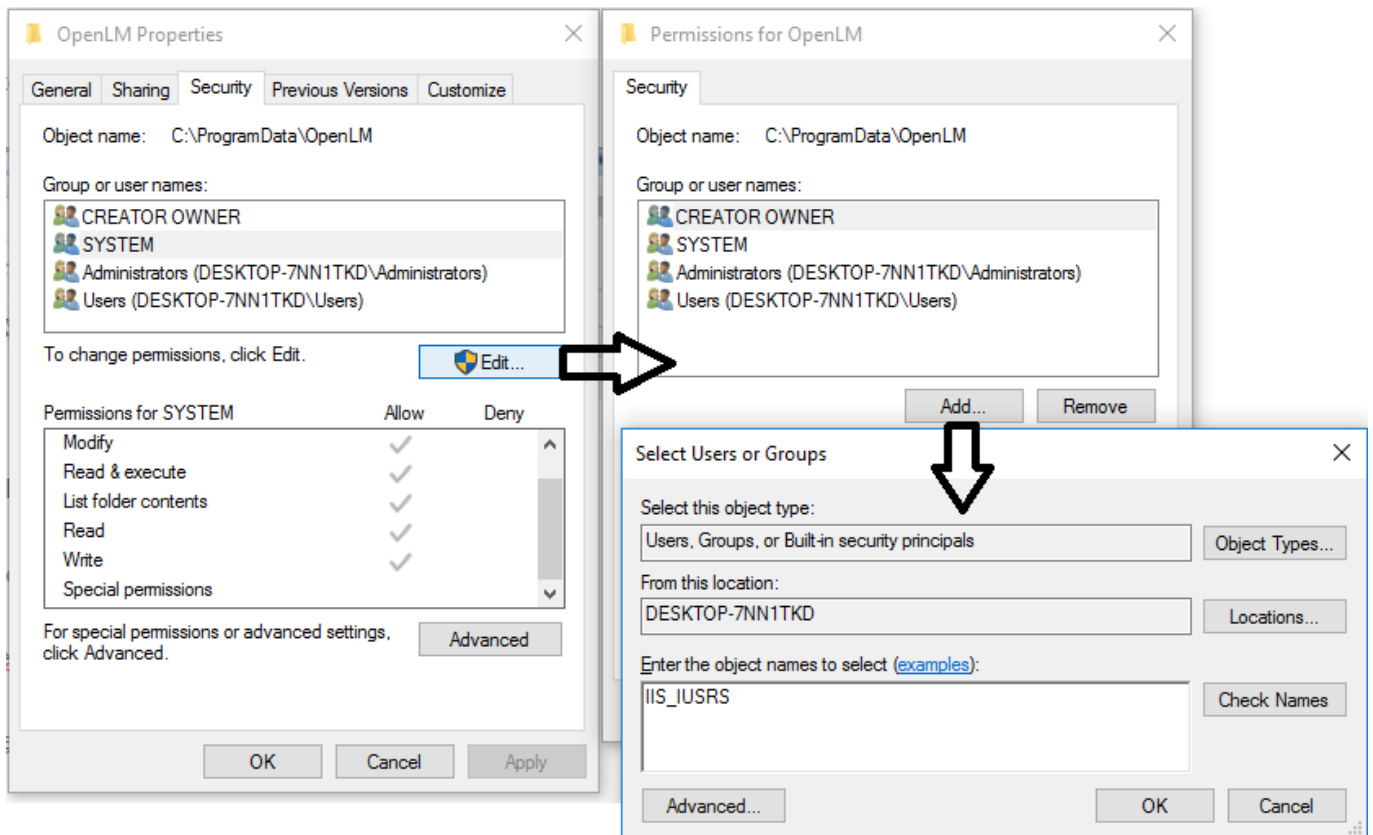
`%ALLUSERSPROFILE%\OpenLM\openlm_proxy.log`

(typically "C:\ProgramData\OpenLM\openlm\_proxy.log")

5b. Set read/write/execute permissions for the SYSTEM account and for the IIS\_IUSRS group account on the `%ALLUSERSPROFILE%\OpenLM\` directory (typically `C:\ProgramData\OpenLM\`) :

- In windows explorer right click on the directory icon, and select 'properties'
- Select the 'Security' tab
- Select the 'SYSTEM' account, click the edit button and add the read/write/execute permissions.
- Add the IIS\_IUSRS account as depicted in the image below, and add the read/write/execute permissions to that account as well.





## 6. Verify EasyAdmin functionality

In order to open the OpenLM EasyAdmin web application, type the following URL on the browser URL line:

or

<http://<IP of Host>/EasyAdmin2/index.html>

## 7. Adding new MIME types

OpenLM Versions 3.0 and 3.1 require adding MIME types to support additional file extensions.

7a. In the IIS Manager connections pane, select the EasyAdmin2 site, and click the “MIME types” icon.

7b. On the top - right corner select “Open Feature” and ‘Add...’. The “Add MIME Type” dialog box appears.

7c. Type in the following information in the “Add MIME Type” dialogue:

Woff:

- File extension: woff
- MIME type: application/font-woff

Woff2:

- File extension: woff2
- MIME type: application/font-woff2

JSON:

- File extension: json
- MIME type: application/json

SVG:

- File extension: svg
- MIME type: image/svg+xml

See the screenshot below for clarification.



7d. Click ‘OK’ to accept the new MIME type.

## The “File Fetching” mechanism - IIS

Some EasyAdmin capabilities involve the OpenLM proprietary “File fetching” mechanism. This includes EasyAdmin windows’ exporting to CSV files, and the fetching of License Server Options files, License files, logs etc.

This mechanism requires the definition of a virtual directory to point to the physical directory to where the CSV file is being downloaded. With the default LightTPD web service, these settings are already implemented. When applying IIS this linkage needs to be added in the IIS manager.

1. Open EasyAdmin Start -> Administration -> File Fetching.

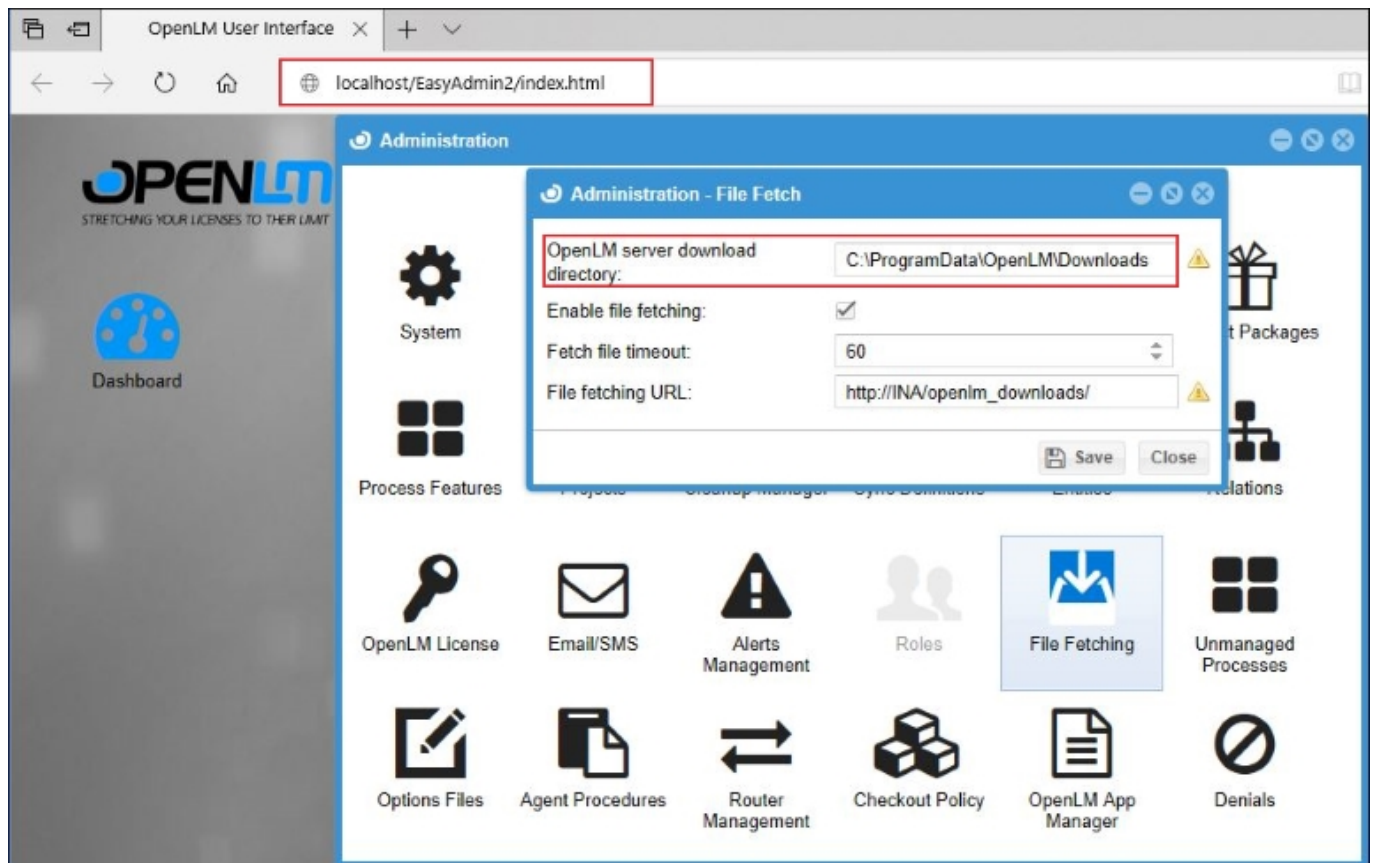
Observe:

1a. The OpenLM download directory (default: C:\ProgramData\OpenLM\Downloads).

This is the physical directory where the CSV files are downloaded to.

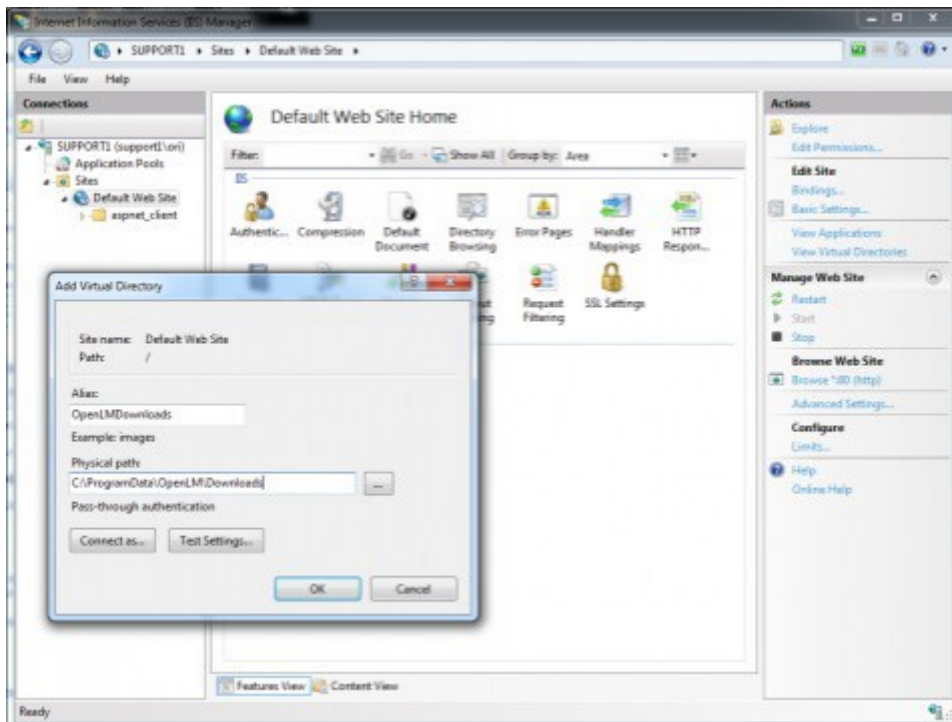
1b. The file fetching URL which should point to a virtual directory, linked to the physical download directory.

2. Change the virtual directory as shown in the image below.



Note that, the '/' suffix in the File Fetching URL is required, and that with IIS, the port number (7019) has to be deleted manually in the URL.

3. In the IIS manager, select the machine name -> 'sites' node -> Default Web site -> right click -> "Add virtual directory". Fill in the text boxes as in the image below.



4a. In the IIS Manager connections pane, select the OpenLMDownloads virtual directory.

4b. Click the “MIME types” icon.

On the top - right corner select “Open Feature” and ‘Add...’. The “Add MIME Type” dialog box appears.

4c. Type in the following information in the “Add MIME Type” dialogue:

file extension: .\*

MIME type: application/octet-stream

This should enable downloading EasyAdmin export CSV files, and fetching of various License Server files onto the machine running EasyAdmin.