

This Application note deals with two associated subjects: a) Renaming features as products, and b) gathering these features into licensed packages.

- Many features are only named as serial or coded strings, which bear little or no meaning for the end user. Renaming features is required in order to enhance readability and improve the understanding of EasyAdmin reports.
- Package or Suit licenses are, as their name implies, a set of features which are licensed together as a package. These kind of licenses should be dealt differently than individual licenses, in order to avoid confusion.

## Products/Packages window

The interface for handling Product names Packages in EasyAdmin is the **Products/Packages** window.

Open the OpenLM EasyAdmin web application:

Start → Administration→Products/Packages

## Product names

The **Products/Packages** window enables users to define a meaningful product name to be displayed alongside a feature name. For example, the feature “421003DSMAX\_MAP\_5\_0F” corresponds to the product “Map R5” in the image above. In order to edit the product name, left-click the Product name column for the row of that feature, the product name is editable. Click **Save** to retain results. The **Delete** button at the top left corner is used to remove feature/product name combinations.

Feature name	Feature version	Product name	Vendor	Parent Package
421003DSMAX_5_OF		3ds max R5	adskflex	
455003DSMAX_6_OF		3ds max R6	adskflex	
477003DSMAX_7_OF		3ds max R7	adskflex	
662003DSMAX_F		3ds max Package	adskflex	
506003DSMAX_8_OF		3ds max R8	adskflex	662003DSMAX_F
533003DSMAX_9_OF		3DS Max R9	adskflex	662003DSMAX_F
568003DSMAX_2008_OF		Autodesk 3DS Max Design 2008	adskflex	662003DSMAX_F
612003DSMAX_2009_OF		Autodesk 3DS Max Design 2009	adskflex	662003DSMAX_F
699003DSMAX_2010_OF		3ds max 2010	adskflex	662003DSMAX_F
7000MAXDES_2010_OF		Autodesk 3DS Max Design 2010	adskflex	70100MAXDES_F
65300ARCHDESK_F		AutoCAD Architecture Package	adskflex	
40100ARCHDESK_3_3F		Architectural Desktop R3.3	adskflex	
46700ARCHDESK_2005_OF		Architectural Desktop 2005	adskflex	
46700ARCHDESK_2006_OF		Architectural Desktop 2006	adskflex	

The **Products/Packages** window provides an interface to the OpenLM translation table between Feature Names and Product Names. If this translation table is well maintained then the data reported on the EasyAdmin screens will be more comprehensible.

## Setting up a Package in EasyAdmin

Often times, the application is configured as a design suite/package. OpenLM will indicate that there are more licenses than there actually are, thus giving the appearance of a smaller percentage of license usage than expected. This is caused by a misconfiguration of packaged licenses.

There are three ways of setting up packaged licenses in OpenLM:

- Automatically for FLEXlm managed licenses, by extracting the packaging data in the license file.
- Through XML files provided by OpenLM or edited by the user
- Via the Products/Packages window

## **Automatically setting Packages According to FLEXlm License Files**

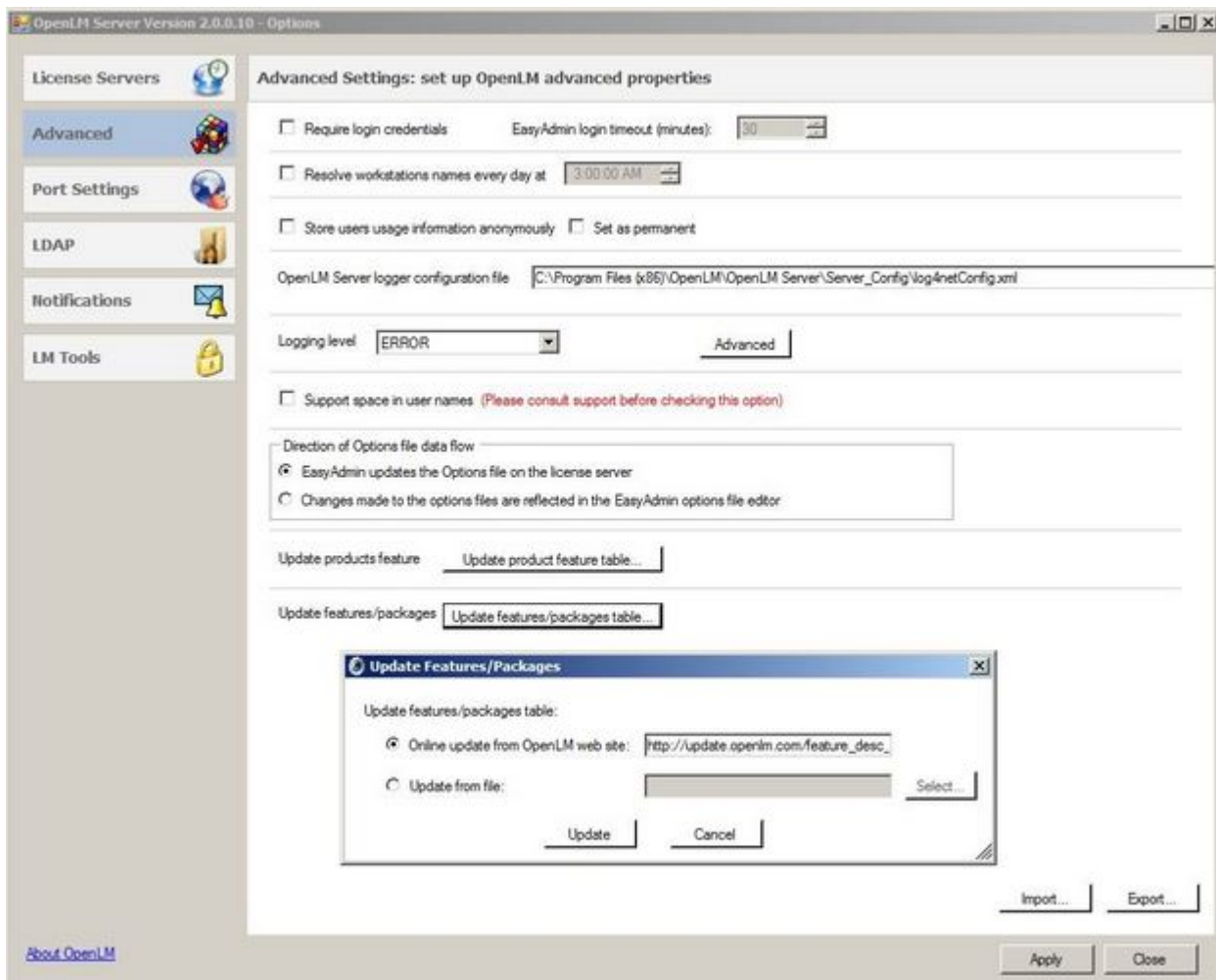
OpenLM provides the capability to extract Packaging information from FLEXlm license files. This was done by the OpenLM Broker component, which is installed on the license server machine.

For more information on how to obtain license packaging information via the license file, please refer to the [Broker configuration document](#).

under the “License manager port, Advanced” section.

### **XML FILES:**

OpenLM provides basic packaging configuration as an XML file. This file is updated on the OpenLM site as needed per vendor design. To apply the latest packaging update to the database, click the **Update Features/Packages Table** from the **Advanced** tab of the **OpenLM Server Configuration tool**. The actual update can be either done by downloading the XML from OpenLM or by means of a local XML file edited by the user.



## MANUAL SETTING OF PACKAGES; AUTODESK CASE STUDY

In order to manually organize licensed Autodesk features in packages, use the **Products/Packages** window. In this example, we'll study the case of the Autodesk 3Ds Max Package.

1. In the **Products/Packages** window, select the **Autodesk 3Ds Max Package** feature: 662003DSMAX\_F and check the **Is Package** checkbox.
2. Click **Save** .
3. Close and reopen the **Products/Packages** window. It is necessary to close and then reopen the window after marking a product as a package.

4. Assign each item of the package to the parent 662003DSMAX\_F :

- Select an item in the list, e.g. 506003DSMAX\_8\_OF
- Right click on the **Parent Package** value to open a drop down menu. Select the feature's **Parent Package**, in this case 662003DSMAX\_F.
- Click **Save** .
- Repeat as needed for each item in the Package.

Feature name	Feature version	Product name	Vendor	Parent Package	Is Package	Is Fixed
Interop		Data Interoperability	ARCGIS		<input type="checkbox"/>	<input type="checkbox"/>
Survey		Survey Analyst	ARCGIS		<input type="checkbox"/>	<input type="checkbox"/>
Publisher		Publisher	ARCGIS		<input type="checkbox"/>	<input type="checkbox"/>
408003DSMAX_4_OF		3ds max R4.3	adskflex		<input type="checkbox"/>	<input type="checkbox"/>
421003DSMAX_5_OF		3ds max R5	adskflex		<input type="checkbox"/>	<input type="checkbox"/>
455003DSMAX_6_OF		3ds max R6	adskflex		<input type="checkbox"/>	<input type="checkbox"/>
477003DSMAX_7_OF		3ds max R7	adskflex		<input type="checkbox"/>	<input type="checkbox"/>
662003DSMAX_F		3ds max Package	adskflex		<input checked="" type="checkbox"/>	<input type="checkbox"/>
506003DSMAX_8_OF		3ds max R8	adskflex	662003DSMAX_F	<input type="checkbox"/>	<input type="checkbox"/>
633003DSMAX_9_OF		3DS Max R9	adskflex	662003DSMAX_F	<input type="checkbox"/>	<input type="checkbox"/>
568003DSMAX_2008_OF		Autodesk 3DS Max Design 2008	adskflex	65300ARCHDESK_F	<input type="checkbox"/>	<input type="checkbox"/>
612003DSMAX_2009_OF		Autodesk 3DS Max Design 2009	adskflex	64300ACD_F	<input type="checkbox"/>	<input type="checkbox"/>
699003DSMAX_2010_OF		3ds max 2010	adskflex	67600NAVMAN_F	<input type="checkbox"/>	<input type="checkbox"/>
70000MAXDES_2010_OF		Autodesk 3DS Max Design 2010	adskflex	70100MAXDES_F	<input type="checkbox"/>	<input type="checkbox"/>
65300ARCHDESK_F		AutoCAD Architecture Package	adskflex	64400AMECH_PP_F	<input checked="" type="checkbox"/>	<input type="checkbox"/>
40100ARCHDESK_3_3F		Architectural Desktop R3.3	adskflex	65500ACAD_E_F	<input type="checkbox"/>	<input type="checkbox"/>
46700ARCHDESK_2005_OF		Architectural Desktop 2005	adskflex	66800REVIT_F	<input type="checkbox"/>	<input type="checkbox"/>
49100ARCHDESK_2006_OF		Architectural Desktop 2006	adskflex	65900REVITS_F	<input type="checkbox"/>	<input type="checkbox"/>
				65200REVSYP_F	<input type="checkbox"/>	<input type="checkbox"/>
				66000REVSU_F	<input type="checkbox"/>	<input type="checkbox"/>

Note the **Is Fixed** check boxes on the right column. Checking these boxes will fix the current configuration as permanent, so it will not be affected by any other packaging method.