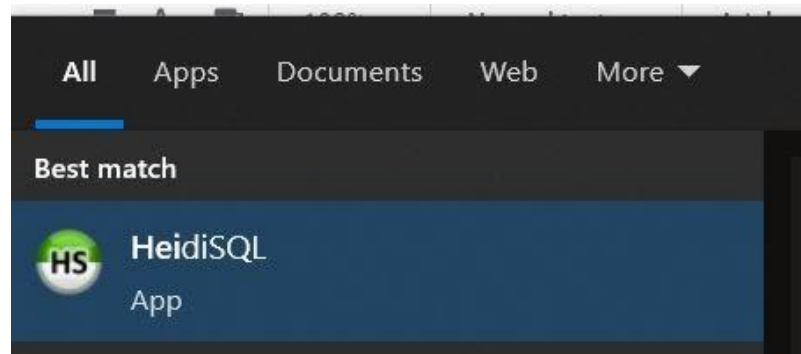
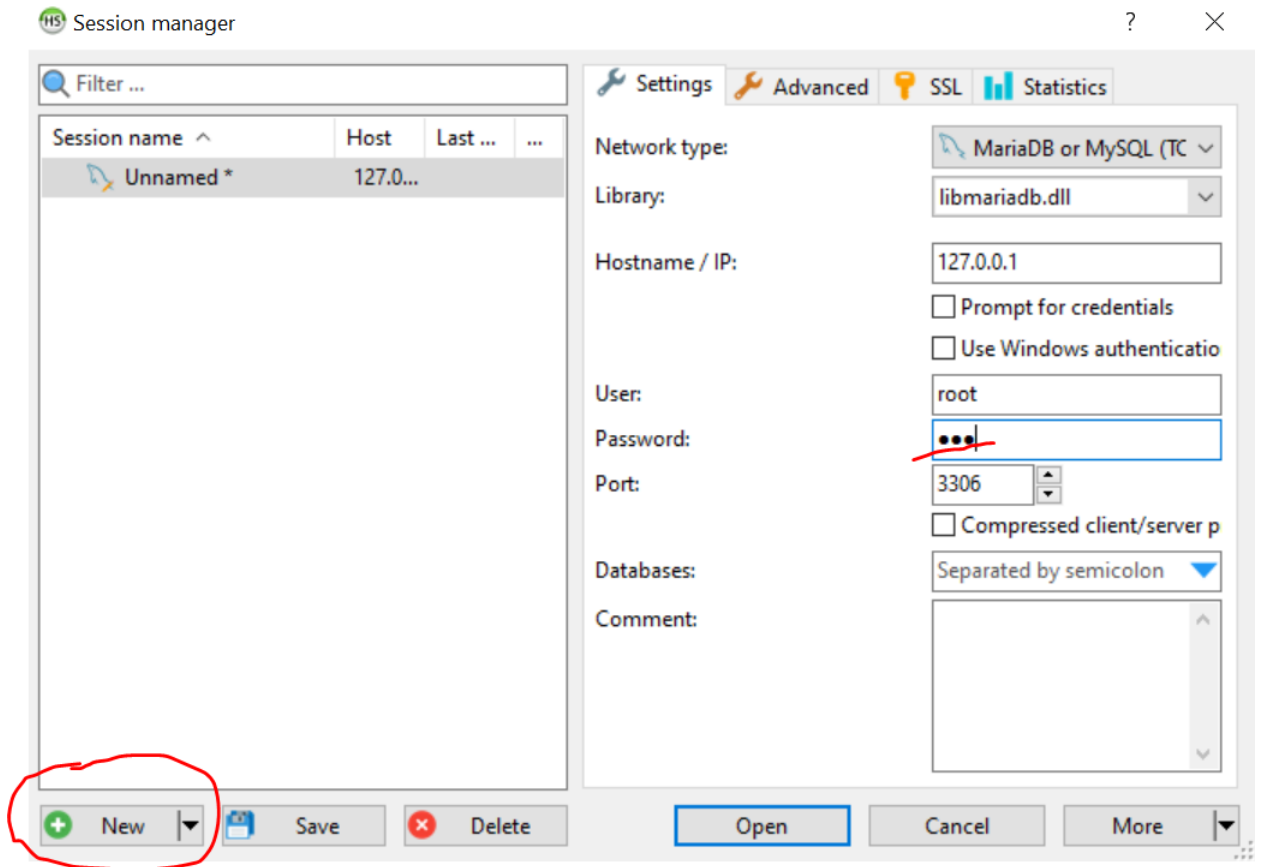


How to set up OpenLM Identity Service with MariaDB

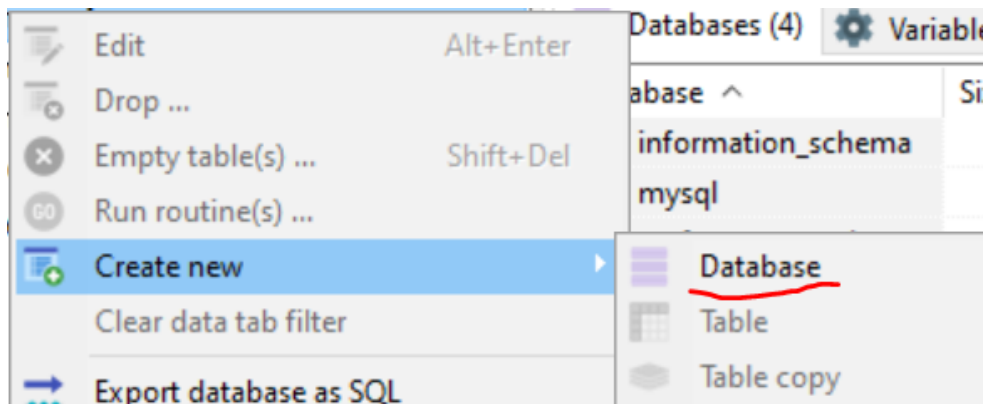
1. Start the HeidiSQL app which was installed by default with the Maria DB



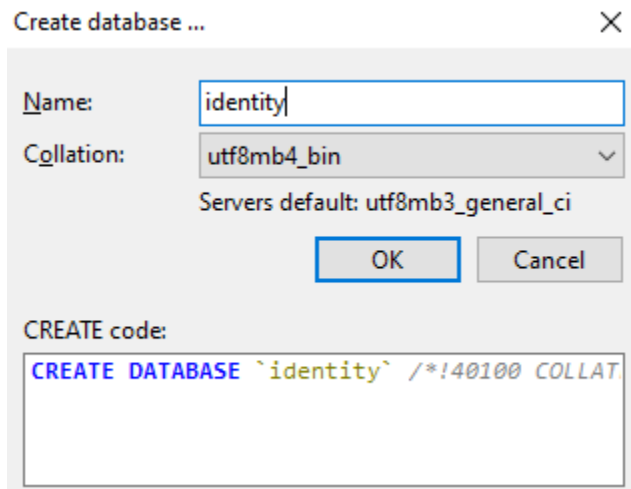
2. Click on “New” and input the root password that you have created during the MariaDB installation process.



3. Right-click on Unnamed (it's the name of your DB instance), go to "Create new", and choose "Database".



4. Input the name of your new DB as "identity" and switch the collation to utf8mb4_bin and click "OK".



5. The database is ready to be connected with the Identity Service during the installation process.