

# WHAT IS LICENSE HARVESTING?

Optimize The Utilization Of Your Software Assets

# TABLE OF CONTENT





What is License Harvesting?	03
Enhanced License Harvesting	04
Benefits of License Harvesting	05
Four License Harvesting Methods	06
What is an OpenLM Token?	12

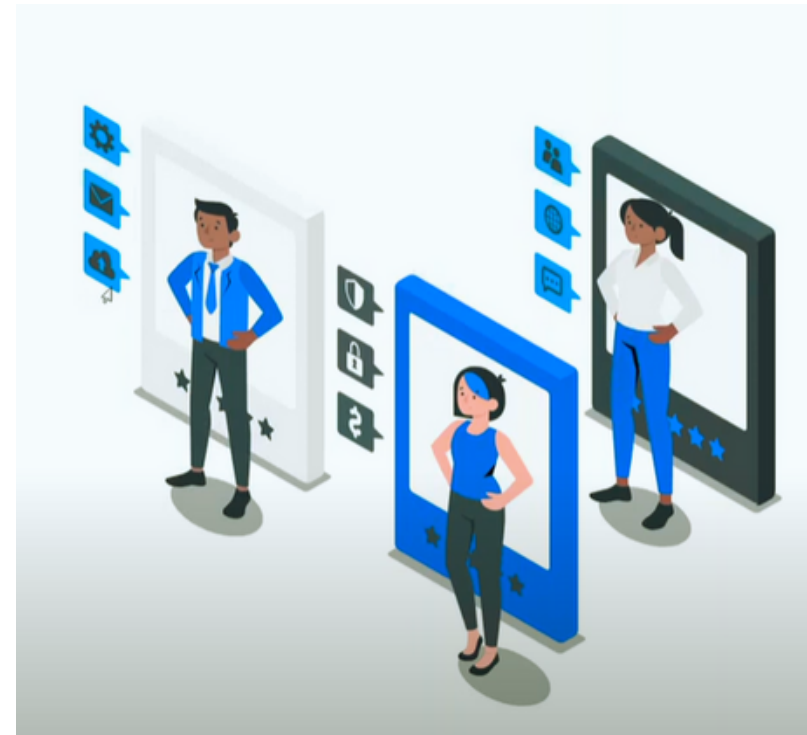
# What is License Harvesting?

License harvesting is the proactive way to reclaim licenses of expensive applications sitting idle on the user's workstation.

The term license harvesting describes the comprehensive action OpenLM takes to help organizations worldwide to optimize the utilization of their expensive network licenses and reduce license costs.

**The basic license harvesting method OpenLM implemented involves two actions:**

-  Identifying idle open application sessions
-  Safely releasing the license in order to improve license utilization



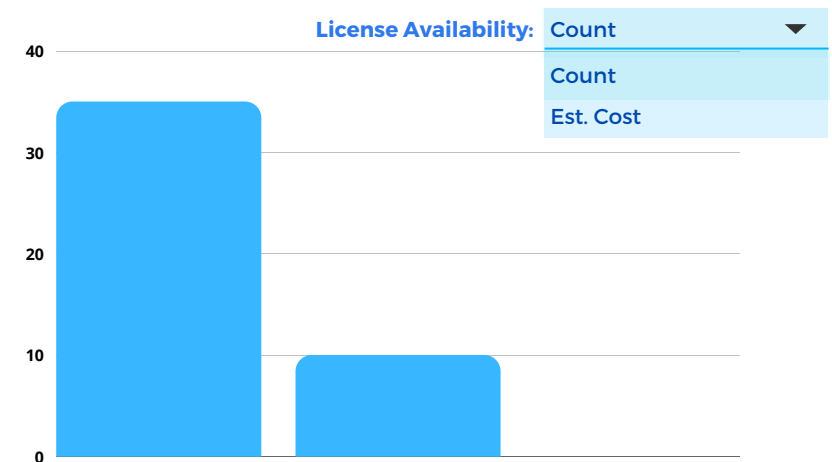
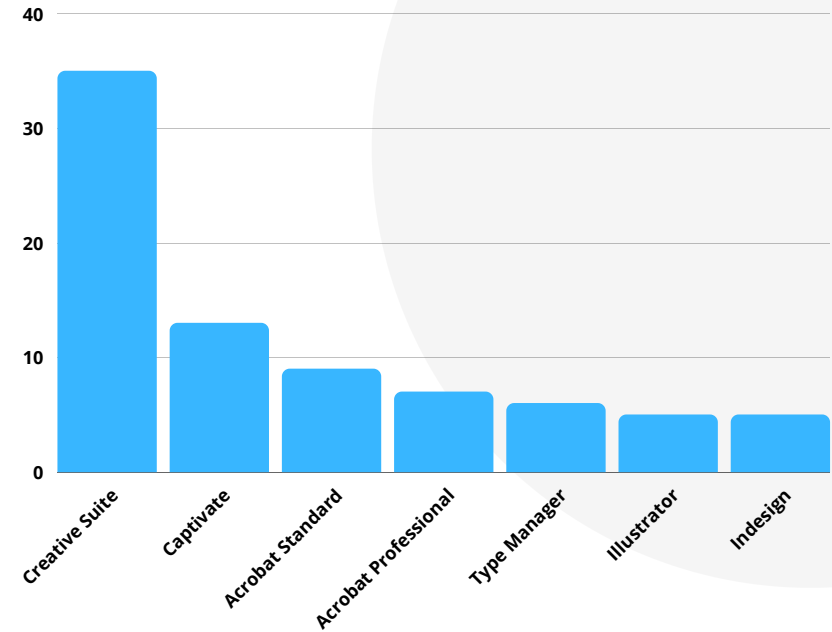
# Enhanced License Harvesting

## MACHINE LEARNING

OpenLM uses machine learning to identify license usage patterns and optimize the organization's software assets. Automatically.

## INCREASE PRODUCTIVITY

The enhanced license harvesting method developed by OpenLM reduces the time an expensive software license is sitting unused on an end user's workstation.



# The benefits of **License Harvesting**



## IMPROVED

license utilization by at least 25%

## REDUCED

license costs

## ENHANCED

license availability



# Four License **Harvesting** Methods

# License Harvesting Methods:

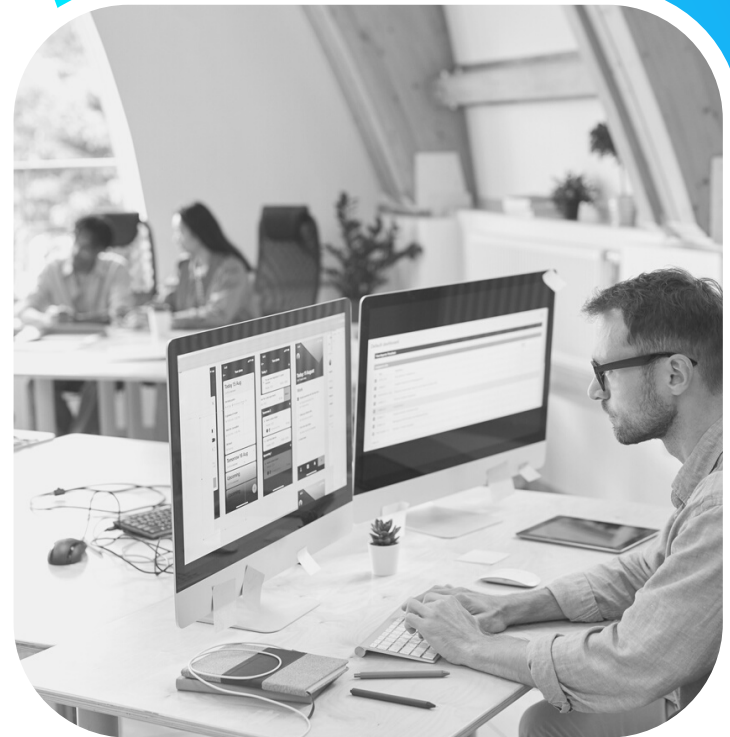
## Manual

01

You identify an idle software in the EasyAdmin user interface.

02

Manually release the license by pressing a button. Remotely. Worldwide.



## License Harvesting Methods: **Save & Close**

- Set the technical parameters for OpenLM to identify idle apps based on your requirements.
- Let OpenLM save the user's work on the workstation and close the idle application.
- The license is then released back to the license pool. This process is automated.



This method can be configured for the following applications:

- |  |           |
|--|-----------|
| 1 ArcGIS and ArcGIS Pro                                | 5 Catia   |
| 2 AutoCAD (all features that use the acad.exe process) | 6 Petra   |
| 3 SOLIDWORKS   | 7 Harmony |
| 4 MATLAB   | 8 Kingdom |



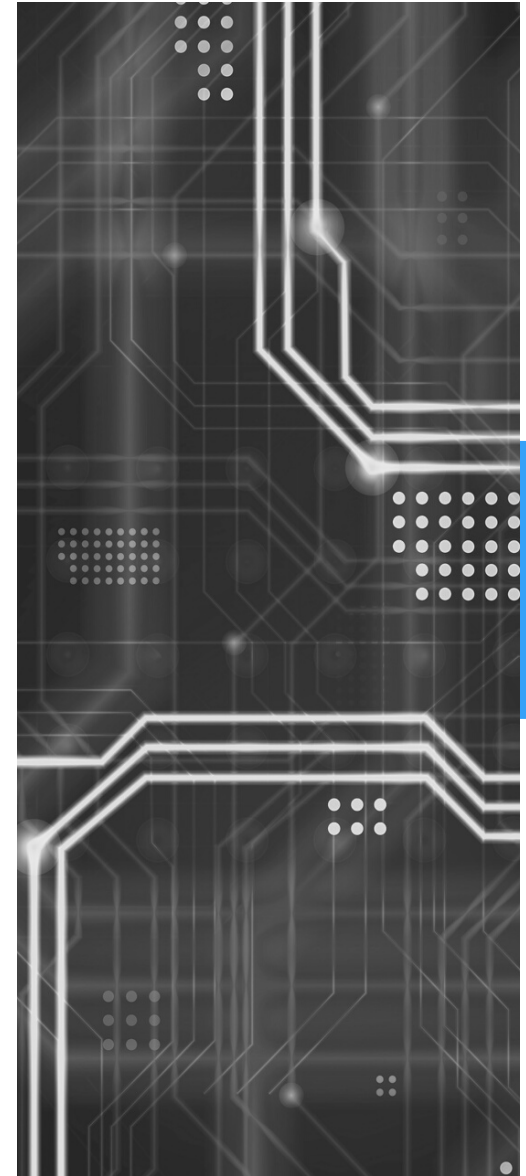
## License Harvesting Methods: **Suspend & Resume**

- Set the technical parameters for OpenLM to identify idle apps based on your requirements.
- When OpenLM detects an idle application, it releases the license back to pool.
- The application is “frozen”, until the license is reclaimed.
- This method is global.
- Applicable to FlexLM license-file managed applications.



## License Harvesting Methods: Custom

- General-purpose license retrieval for licenses managed by any type of license server.
- OpenLM provides a script-based, flexible, configurable mechanism to facilitate license harvesting



# What do i need to enable **License Harvesting**?



- An OpenLM subscription (any one option of subscriptions you may choose).
  - Monitoring: \$2/user/month billed annually.
  - Automation: \$3/user/month billed annually
- OpenLM Tokens
- Workstation Agent installed on the end user's computer

# What is an OpenLM Token?

Built on the floating-license system architecture, OpenLM Token is the most flexible licensing method.

It enables license administrators to maintain a pool of tokens or a number of licenses for an OpenLM functionality, which they can deploy across all or a selected number of users whenever and wherever they need.

To enable the license harvesting functionality of OpenLM, you need to purchase a pool of reusable tokens.

## You can use this pool of tokens to



Harvest licenses sitting idle



Or measure the actual usage of a variety of applications



# How do I calculate the amount of tokens I need?

The following number of tokens are drawn for the managed products at checkout:

Functionality	Pricing (Tokens)
ArcGIS checkout tokens value	400
ArcGIS Pro checkout tokens value	400
Matlab checkout tokens value	400
Solidworks checkout tokens value	400
Autocad checkout tokens value	400
Petra (Oil) checkout tokens value	1000
Kingdom (Oil) checkout tokens value	1000
Harmony (Oil) checkout tokens value	1000
Catia checkout tokens value	1000
Actual Usage checkout tokens value	50
Suspend/Resume checkout tokens value	100
Agent Procedures checkout tokens value	100

# How do I calculate the amount of tokens I need? (cont.)

When you purchase tokens you need to consider two things:

1. The number of licenses the organization owns
2. The number of licenses you want to optimize

For example: you own 100 ArcGIS licenses, but you only want to optimize the utilization of 50 licenses. In this case you will need to purchase  $50 \times 400 = 20,000$  tokens.



If the project ends, you can utilize your token pool to optimize the utilization of other licenses.



When purchasing OpenLM Tokens you sign a fixed term contract



The token expiry date is specified in the agreement you sign with OpenLM

## What is a **Workstation Agent**?

The Workstation Agent is a lightweight software you need to download and install on each end user's workstation where you'd like to activate the license harvesting functionality of OpenLM (or Actual Usage).

It doesn't hamper the performance of hardware or network when monitoring the license usage and communicating with the OpenLM Server (on-premise or cloud).

**With the Workstation Agent running in the background, you level up your license management capabilities by**

- Accessing another layer of information on software utilization and
- Empowering SAM managers with the ability to optimize license usage. Automatically.





# GET IN TOUCH

OpenLM just a call away from you.

Visit us on: [www.openlm.com](http://www.openlm.com)

write us on: [sales@openlm.com](mailto:sales@openlm.com) | [support@openlm.com](mailto:support@openlm.com)

**Israel:** +972 4 6308447 | **USA:** +1 619 831 0029 | **JAPAN:** +81 505 893 6263 | **INDIA:** + 91 98311 72694